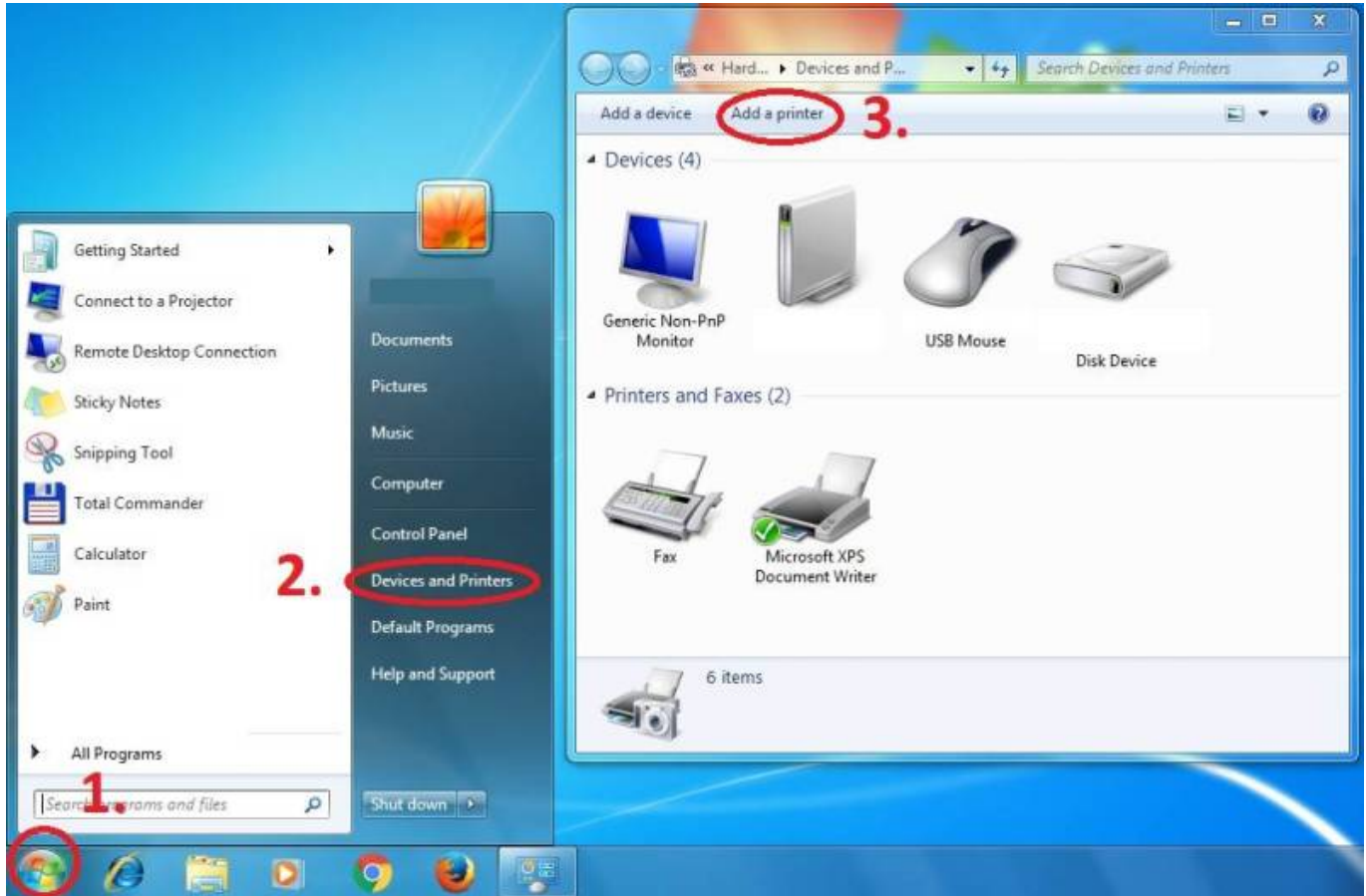


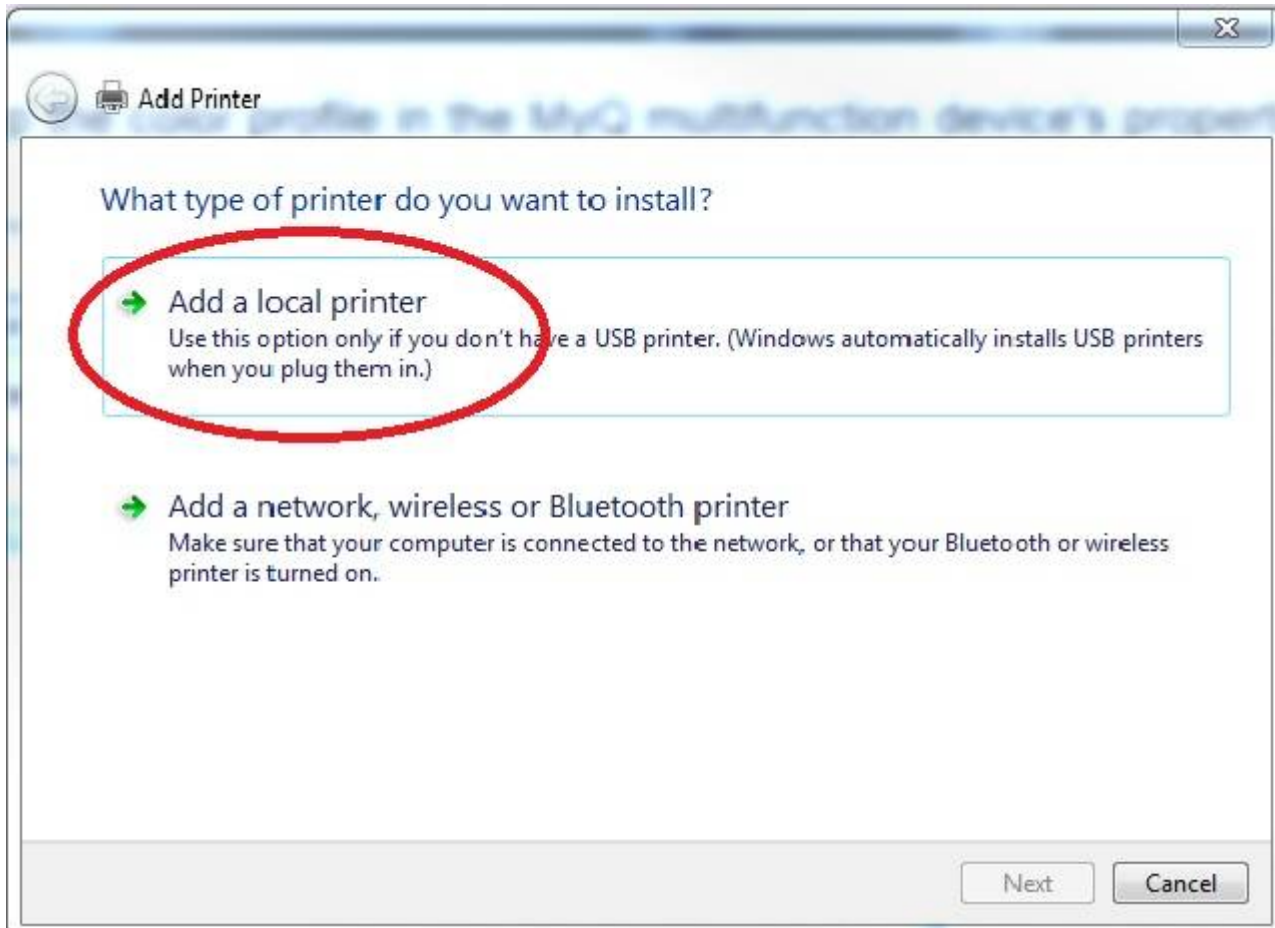
# Instructions for adding a Kyocera printer to user stations

**Important: notebook must be connected to WiFi residents !!!** (libairfree WiFi is not supported)

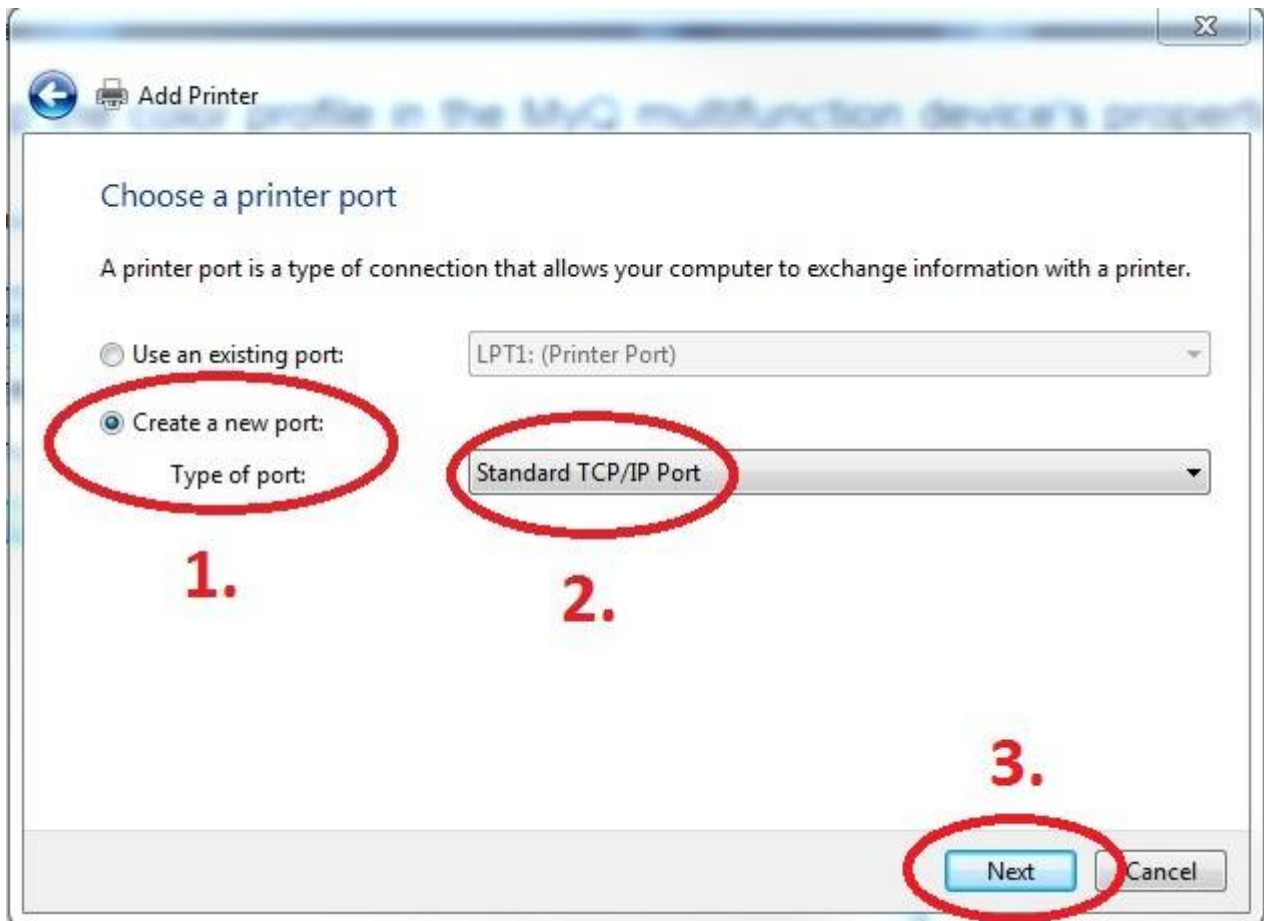
**Press Start button → Devices and Printers → Add a Printer**



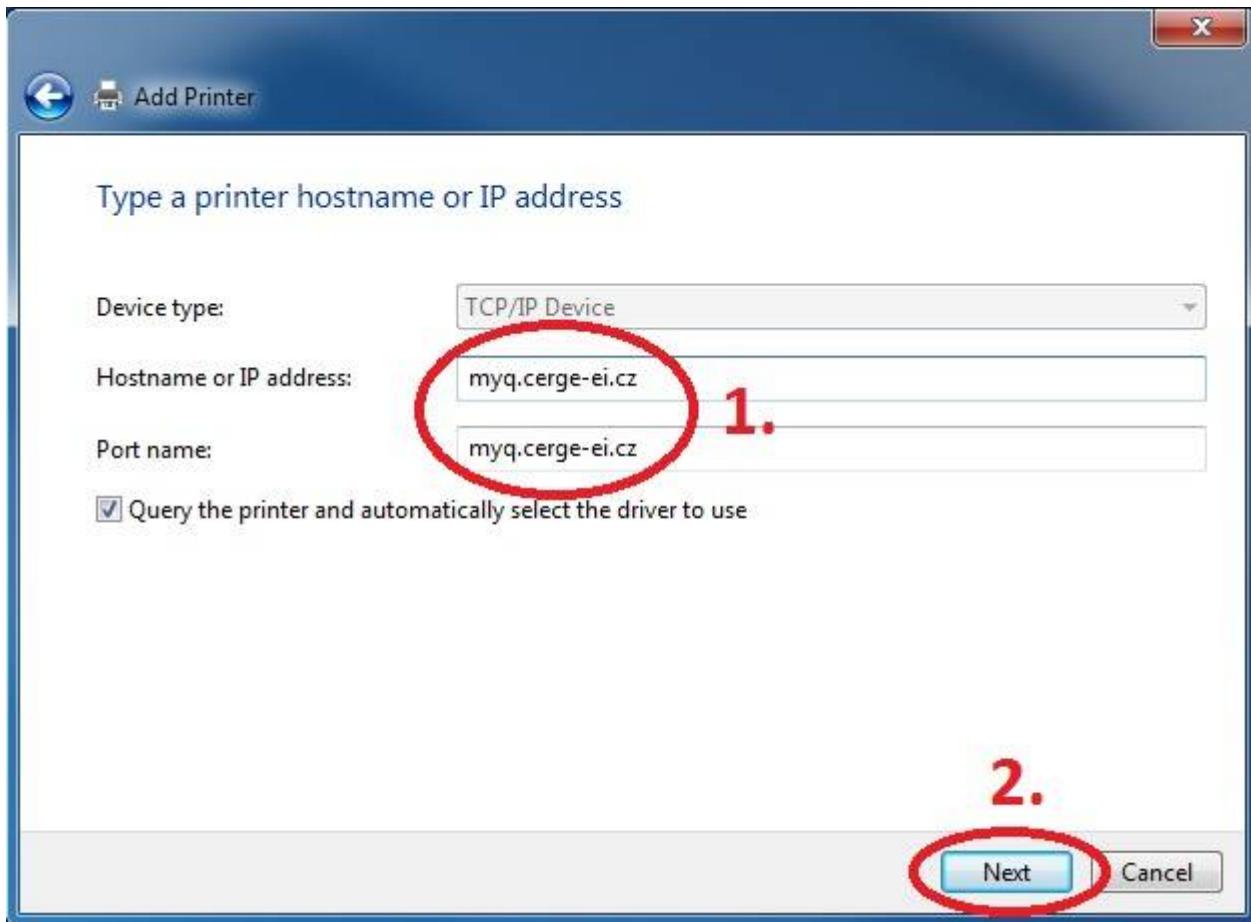
**Add a local printer**



### Create a new port: Standard TCP/IP Port



### Enter Hostname - myq.cerge-ei.cz

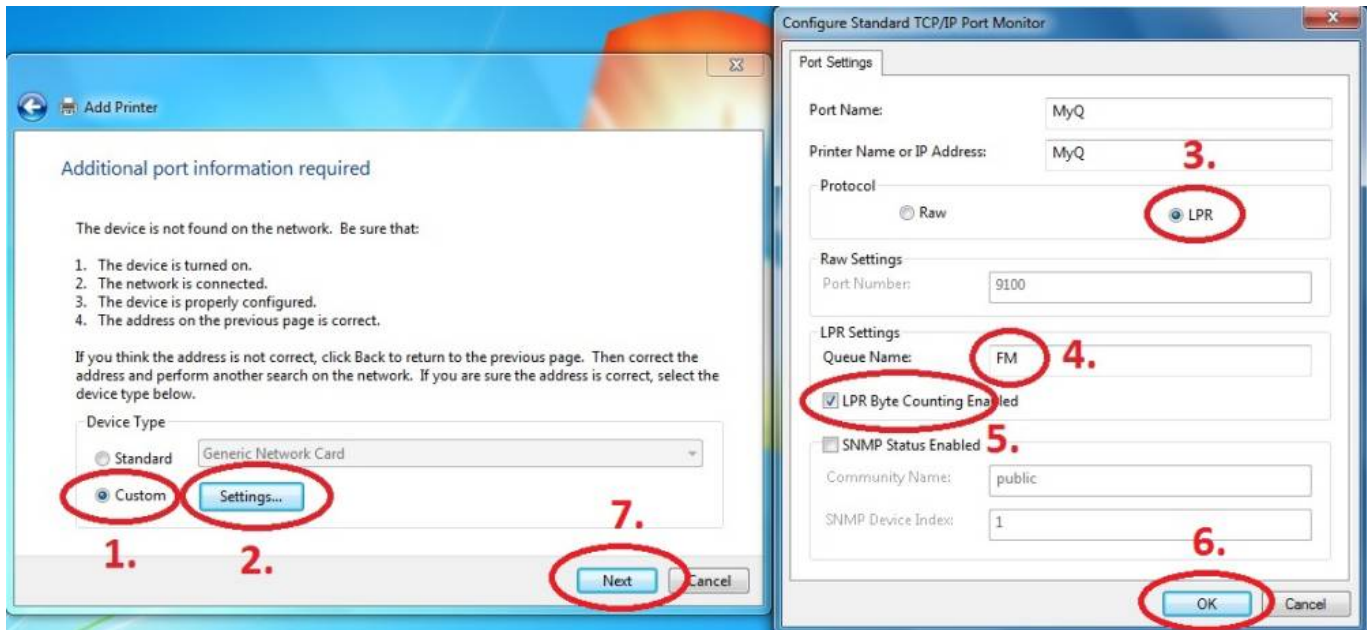


### Customize Settings

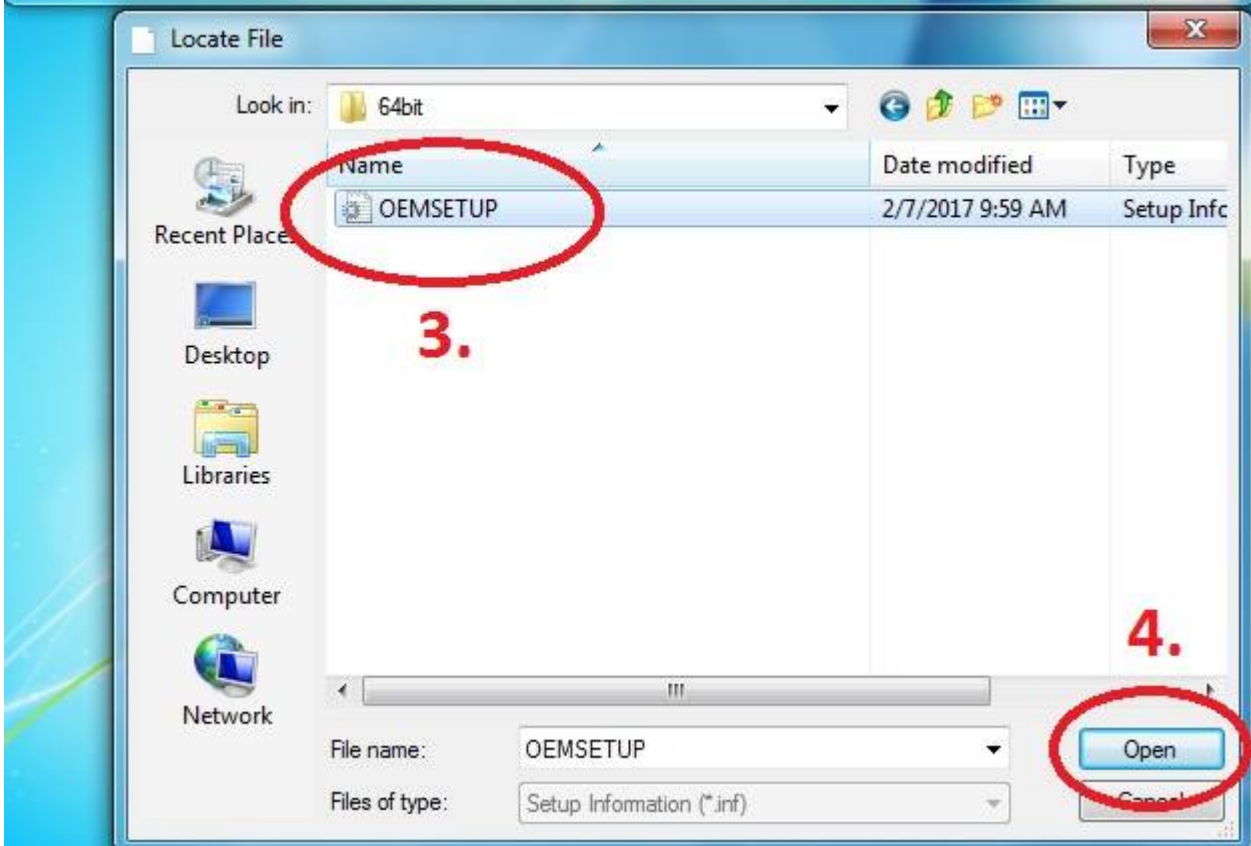
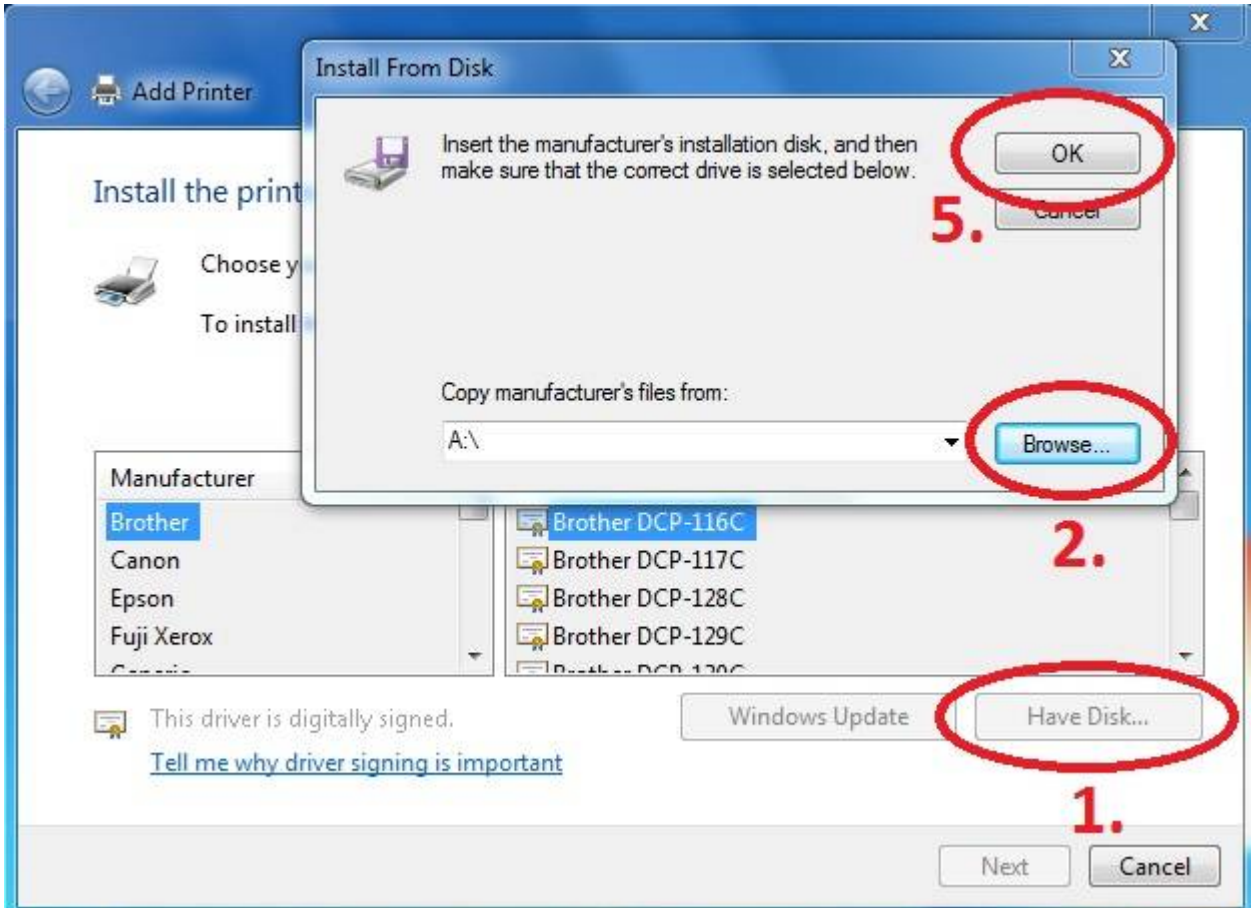
Important settings (check twice 😊)

- Protocol: **LPR (LPD)**
- Queue name: **FM**
- [x] **LPR Byte Counting Enabled**

```
**Queue link: lpd://myq.cerge-ei.cz/FM**
```

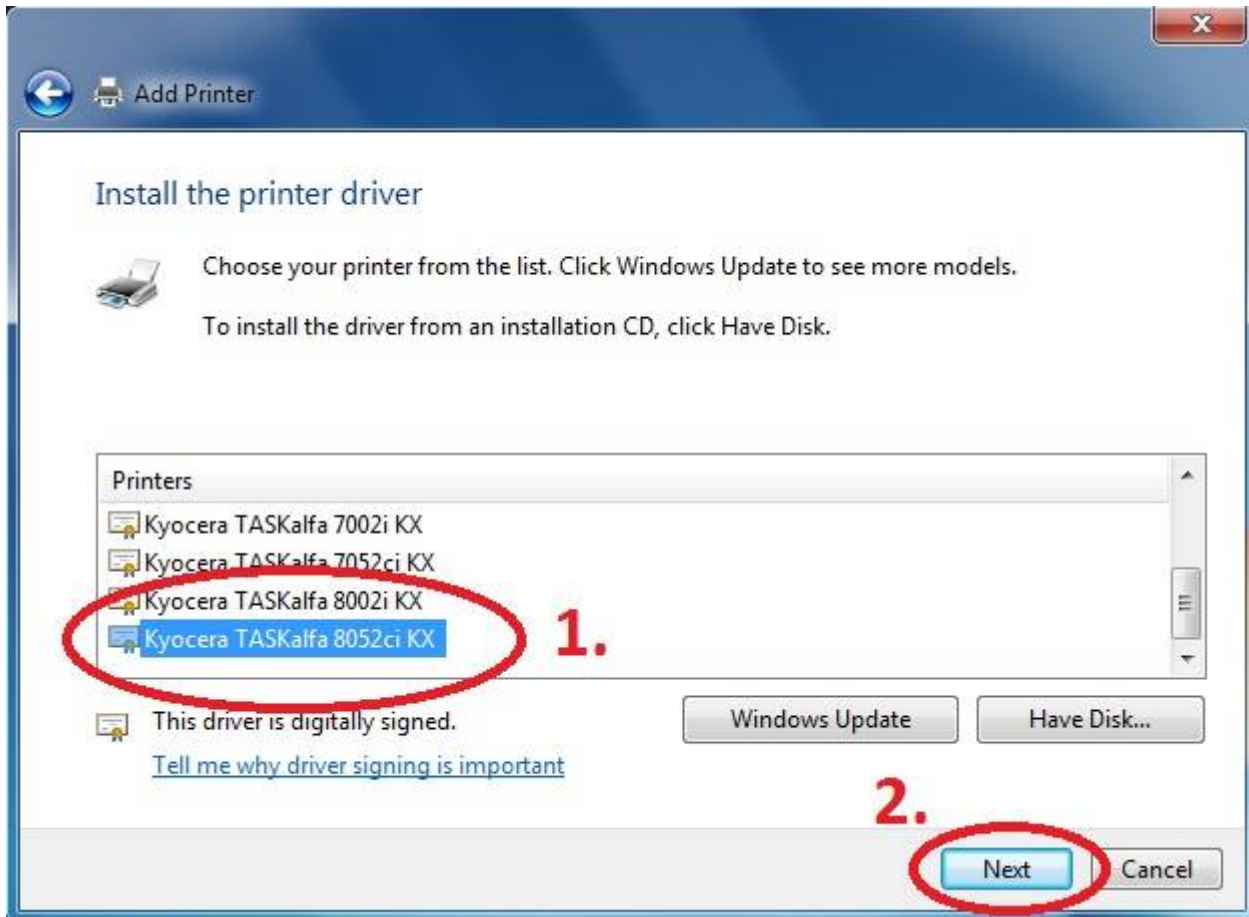


**Download driver and unzip it to the local folder (for example c:\driver\). Choose 32-bit or 64-bit version depending on your system:- 32-bit driver- 64-bit driver Mac OS: OS X 10.8 - 10.13Mac OS X 10.5 and newer\*\*Press Have Disk... Navigate to the driver folder (for example c:\driver\64-bit\)** and select "OEMSETUP".



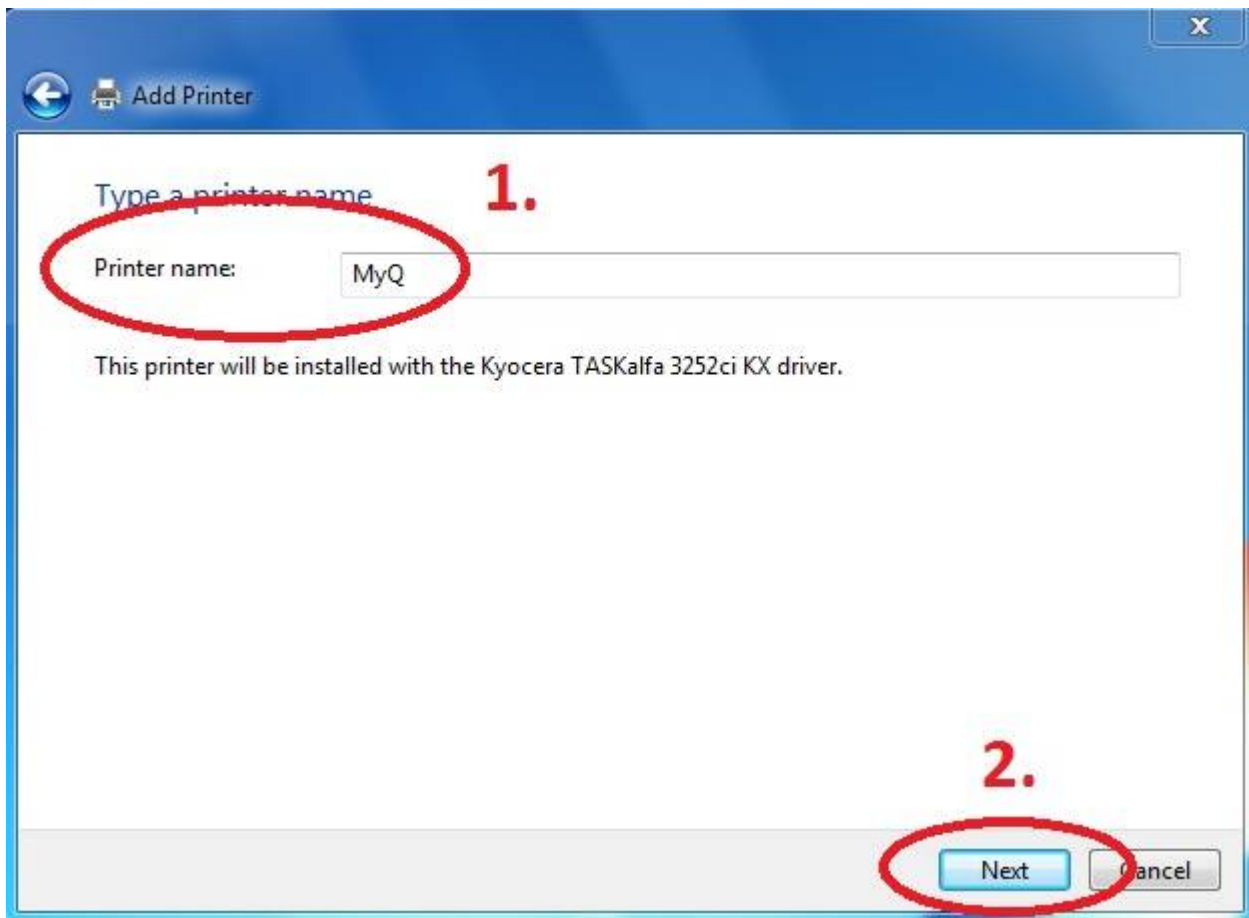
Choose


**Kyocera TASKalfa 8052ci KX**



**Rename**

***Printer and finish installation.***



 After installing the printer, send your local username on the notebook to **helpdesk@cerge-ei.cz** and we will allow printing for your account.

For Advanced settings go to: [https://itinfo.cerge-ei.cz/doku.php?id=public:print:kyocera\\_profile](https://itinfo.cerge-ei.cz/doku.php?id=public:print:kyocera_profile) \*\*''

From:  
<https://itinfo.cerge-ei.cz/> - **CERGE-EI Infrastructure Services**

Permanent link:  
[https://itinfo.cerge-ei.cz/doku.php?id=public:print:myq\\_notebooks&rev=1578915399](https://itinfo.cerge-ei.cz/doku.php?id=public:print:myq_notebooks&rev=1578915399)

Last update: **2020-01-13 11:36**

