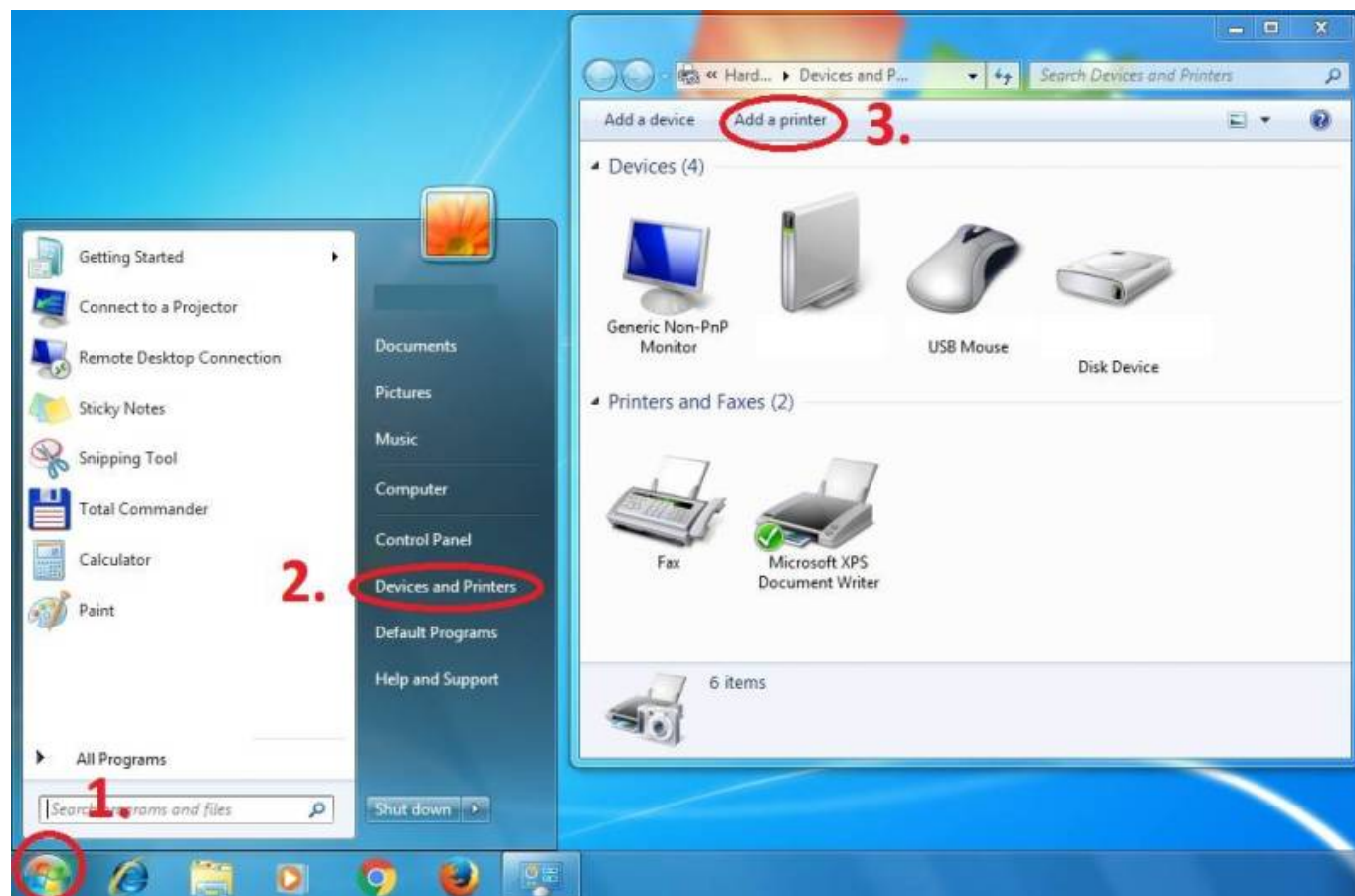


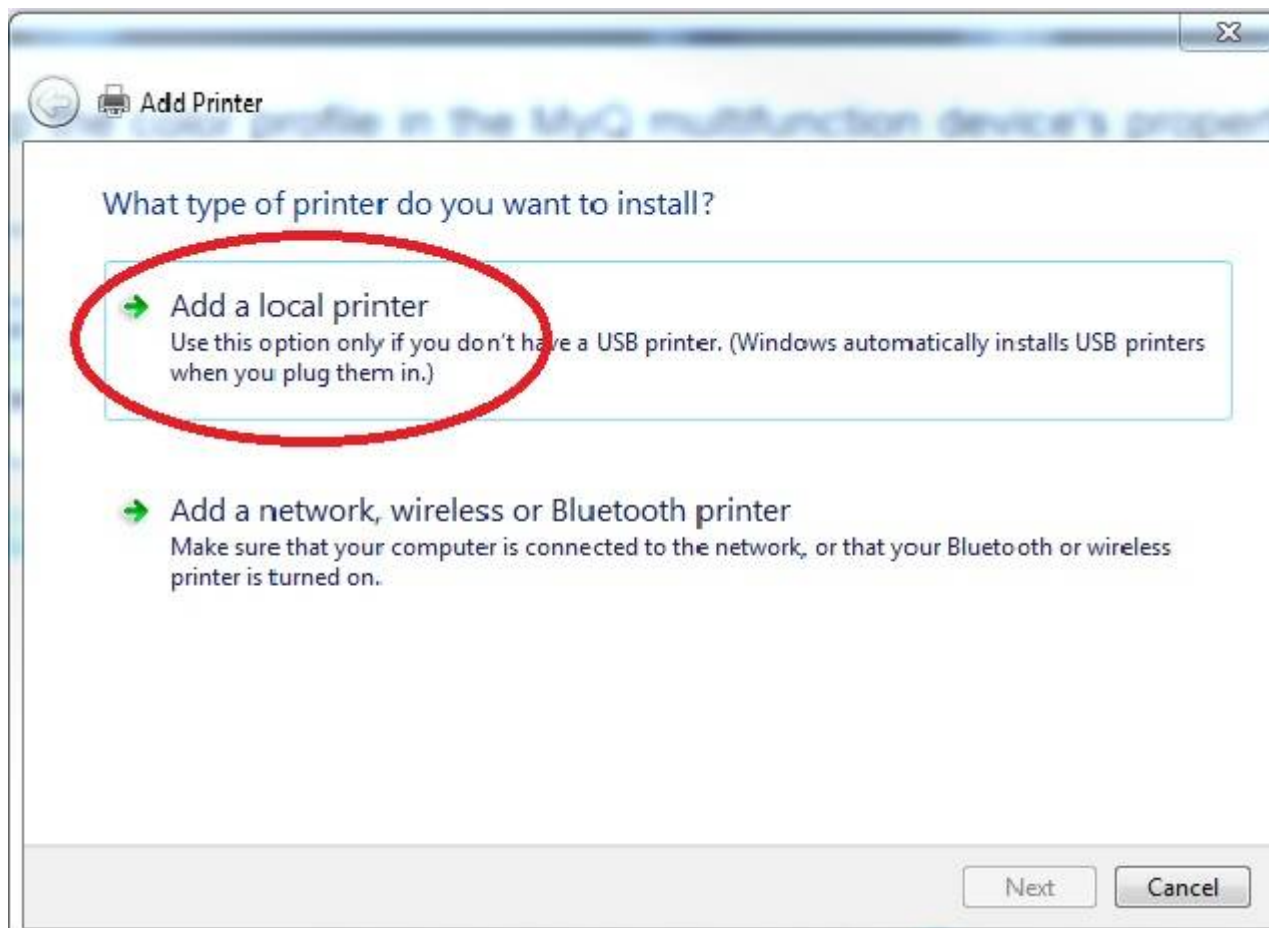
Instructions for adding a Kyocera printer to user stations

Important: notebook must be connected to WiFi residents !!! (libairfree WiFi is not supported)

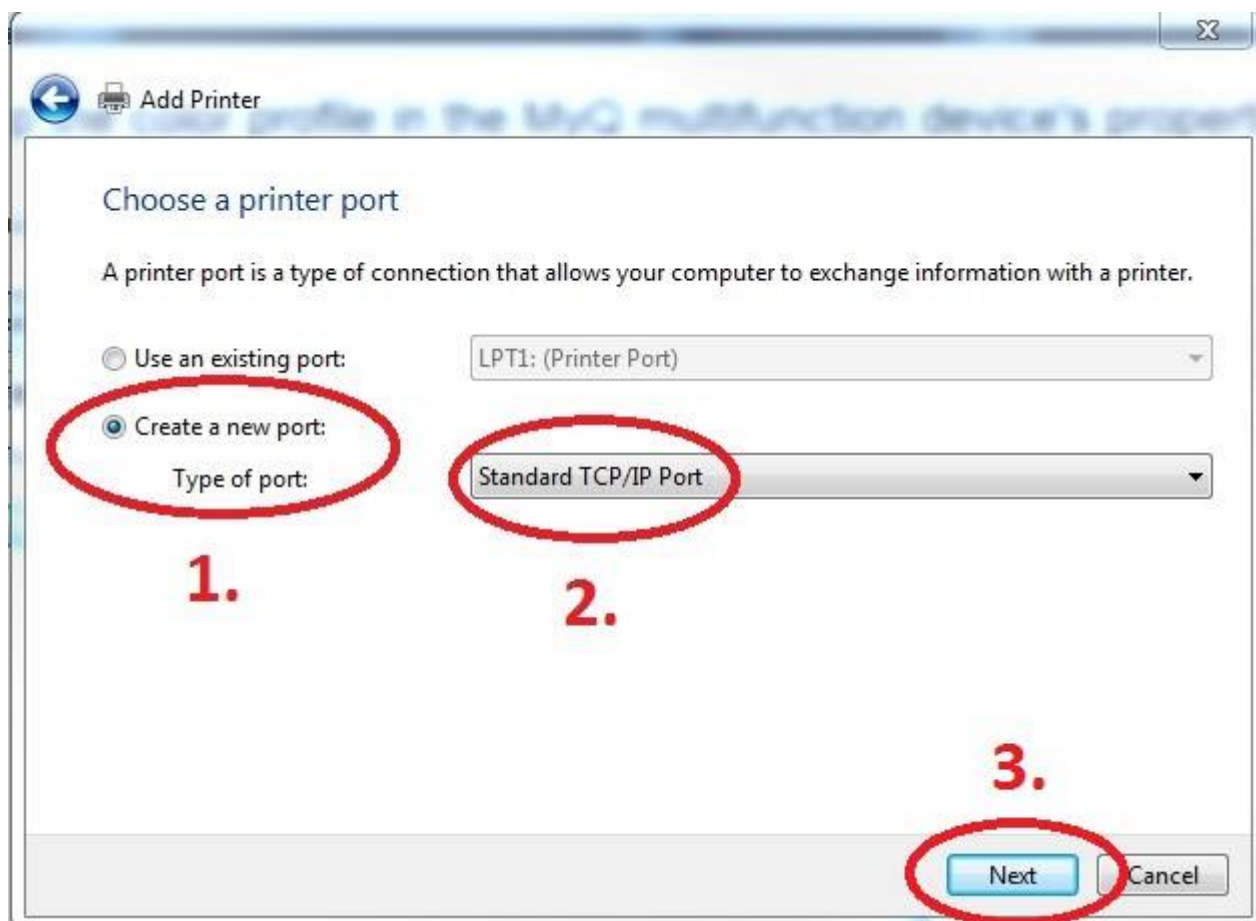
Press Start button→ Devices and Printers → Add a Printer



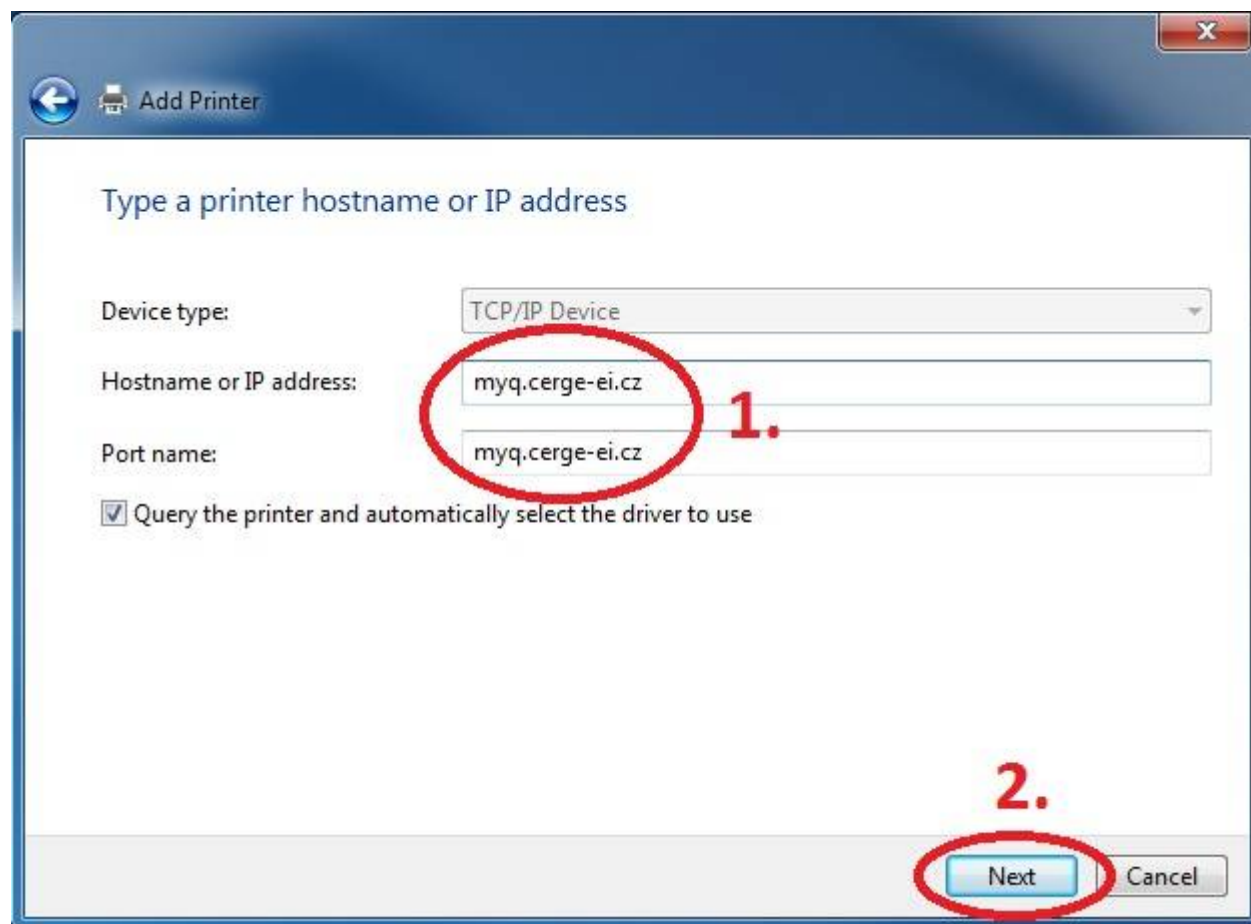
Add a local printer



Create a new port: Standard TCP/IP Port



Enter Hostname - myq.cerge-ei.cz



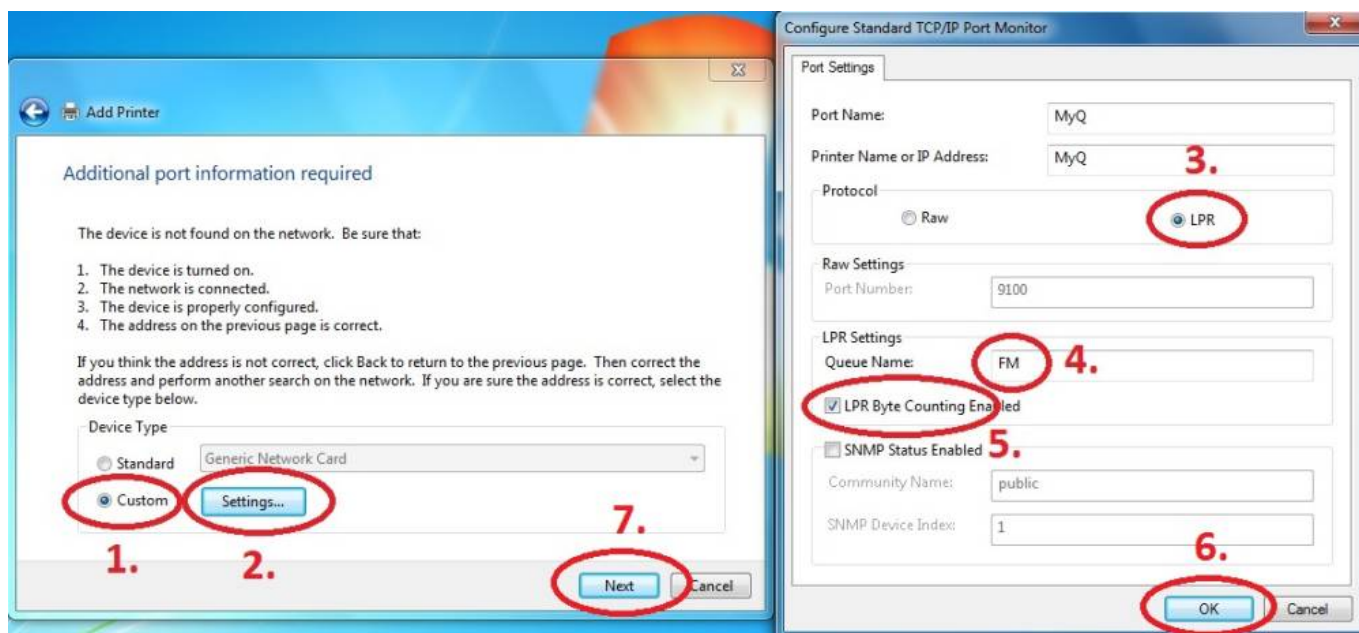
Customize Settings

Important settings (check twice)

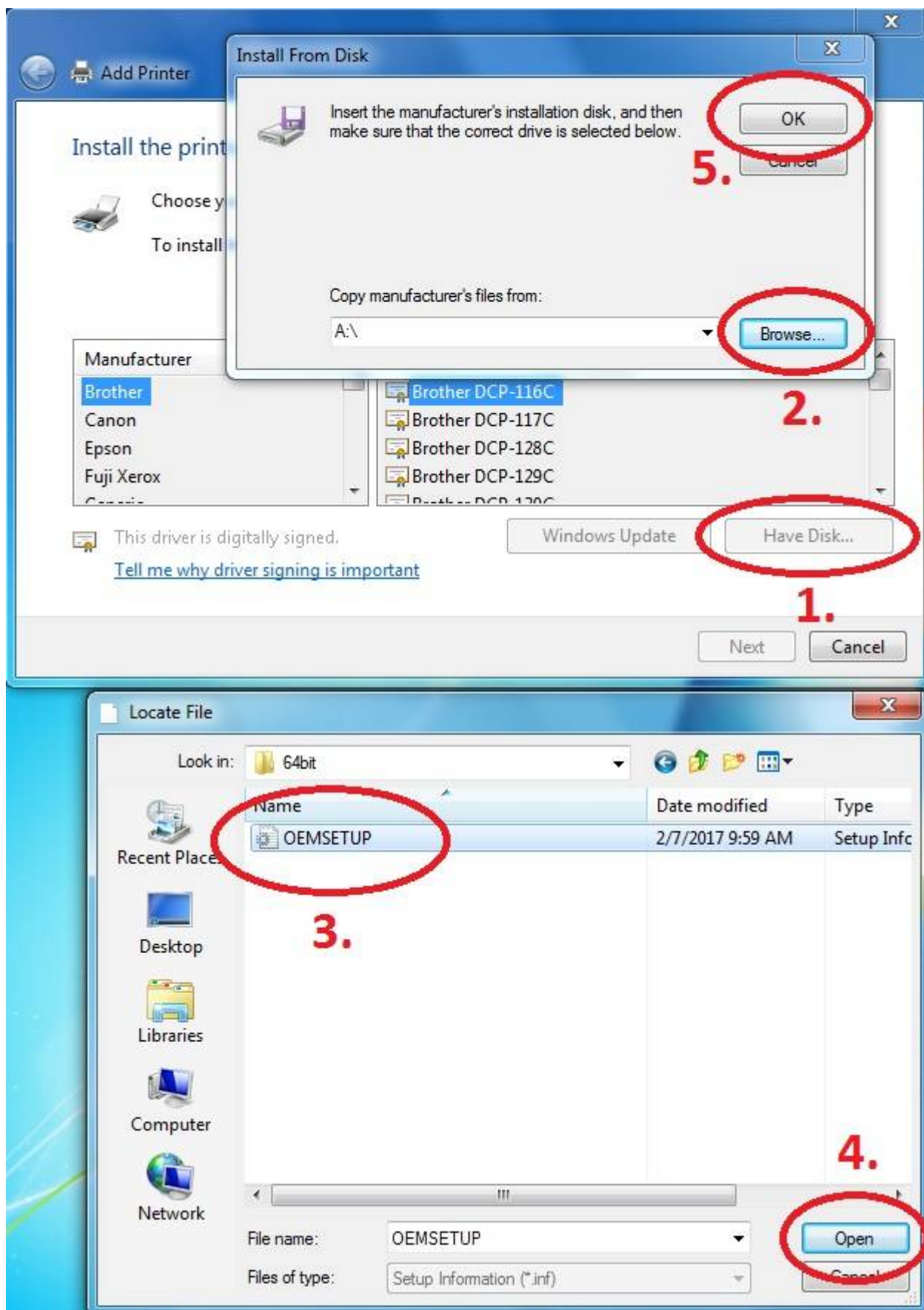


- Protocol: **LPR (LPD)**
- Queue name: **FM**
- [x] **LPR Byte Counting Enabled**

Queue link: **lpd:myq.cerge-ei.cz/FM**

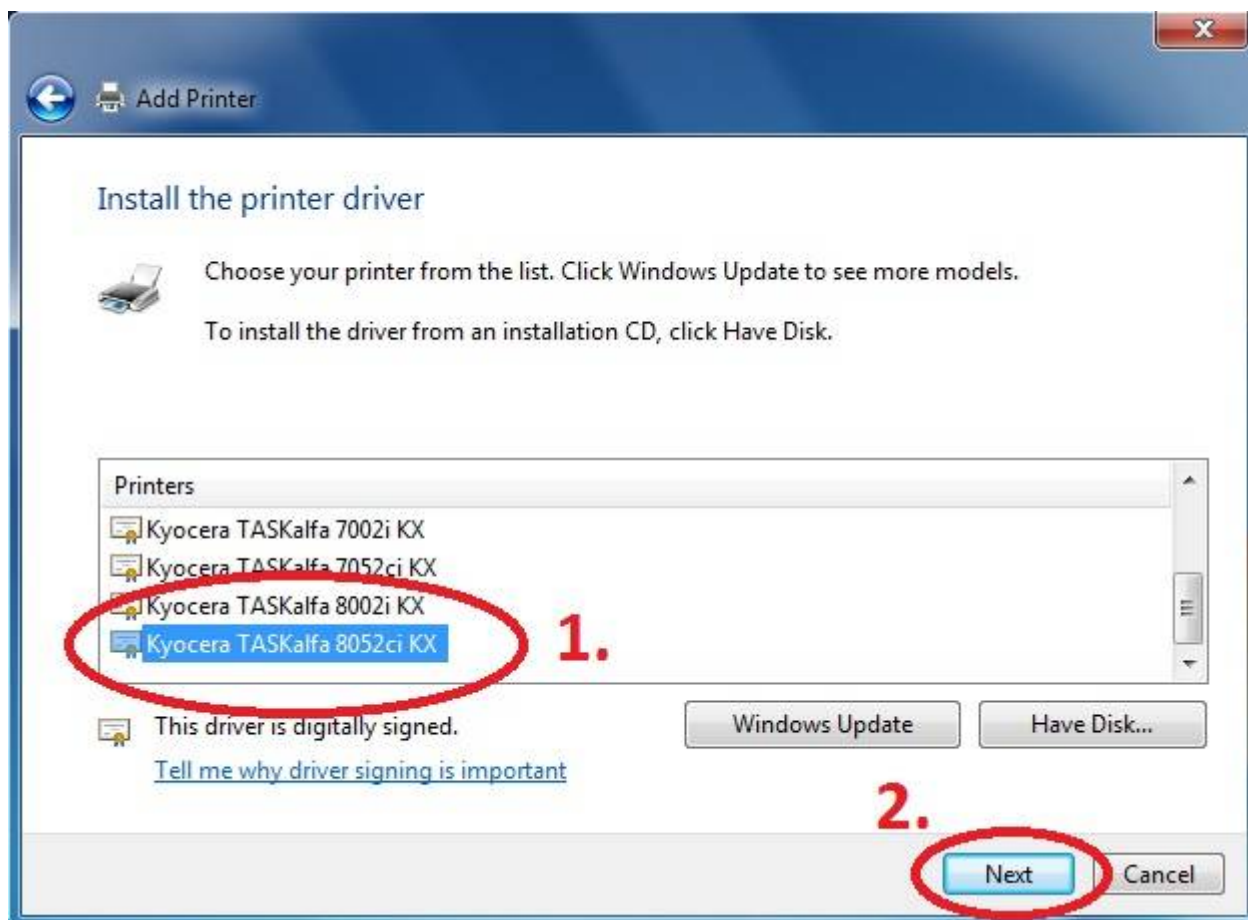


Download driver and unzip it to the local folder (for example c:\driver\).
Choose 32-bit or 64-bit version depending on your system: - **32-bit driver**- **64-bit driver** Mac OS: **OS X 10.8 - 10.13**Mac OS X 10.5 and newer**Press Have Disk...
Navigate to the driver folder (for example c:\driver\64-bit\) and select "OEMSETUP".



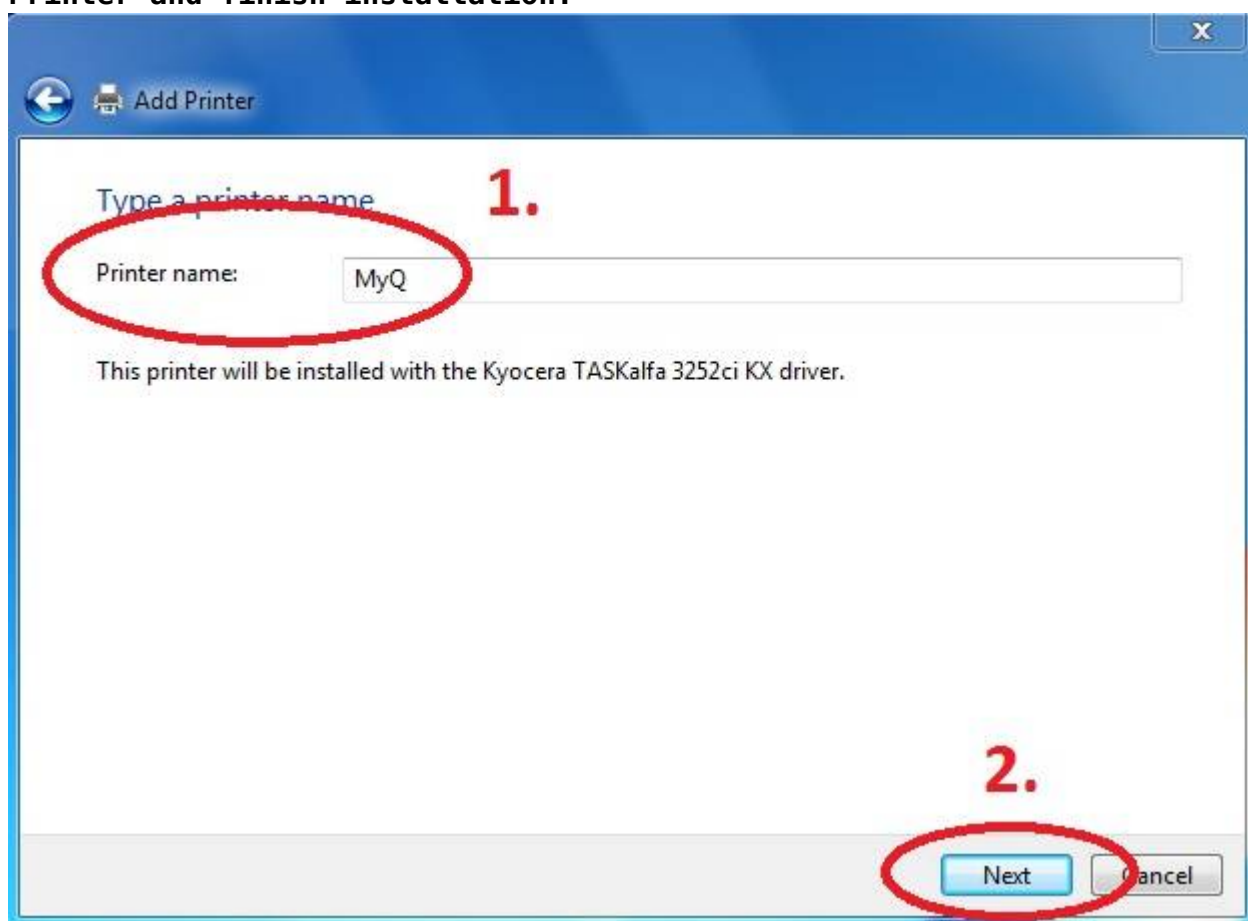
Choose

Kyocera TASKalfa 8052ci KX



Rename

Printer and finish installation.





After installing the printer, send your local username on the notebook to **helpdesk@cerge-ei.cz** and we will allow printing for your account.

For Advanced settings go to:

https://itinfo.cerge-ei.cz/doku.php?id=public:print:kyocera_profile **11

From:

<https://itinfo.cerge-ei.cz/> - **CERGE-EI Infrastructure Services**

Permanent link:

https://itinfo.cerge-ei.cz/doku.php?id=public:print:myq_notebooks&rev=1578915346

Last update: **2020-01-13 11:35**

