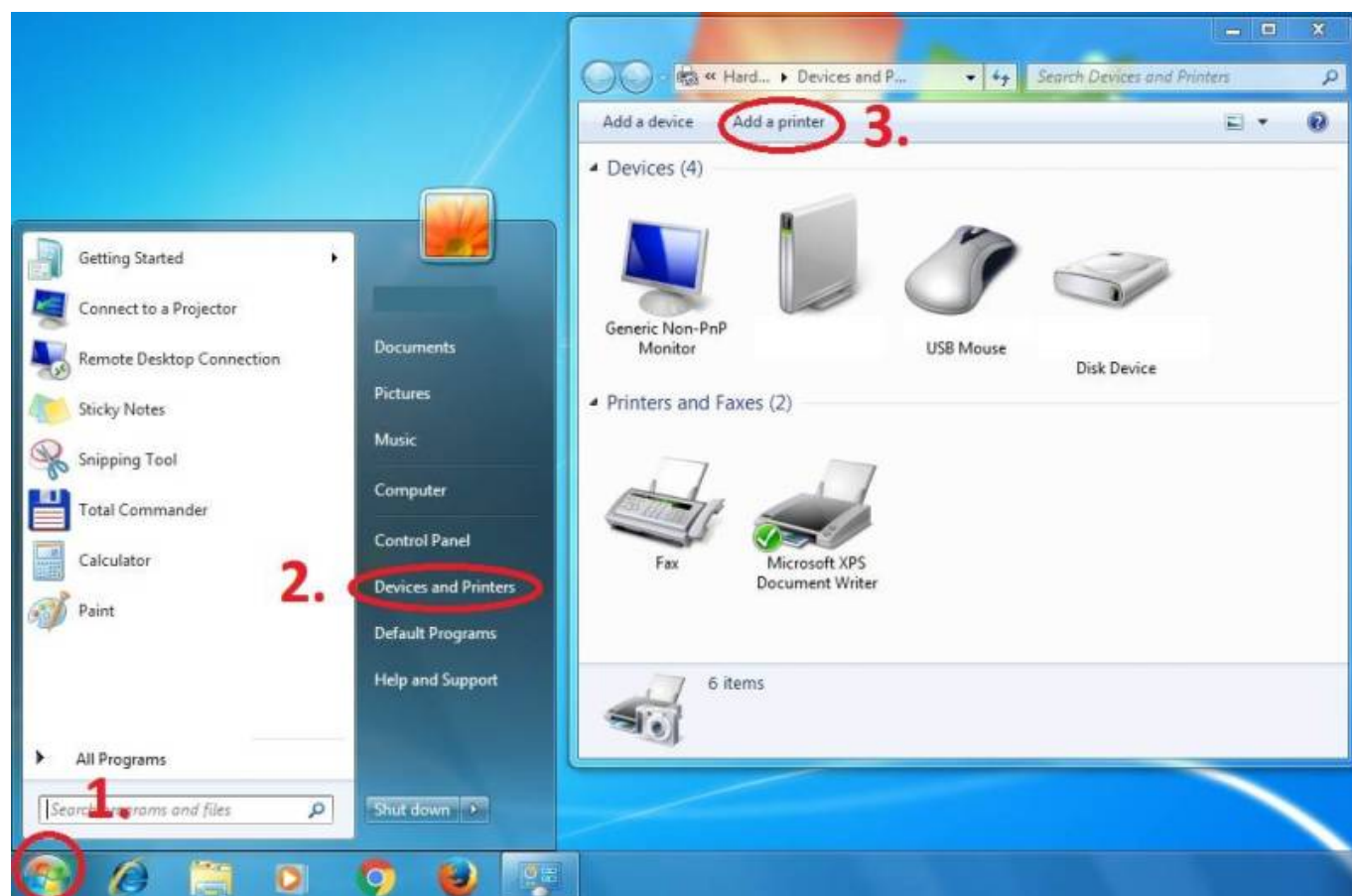


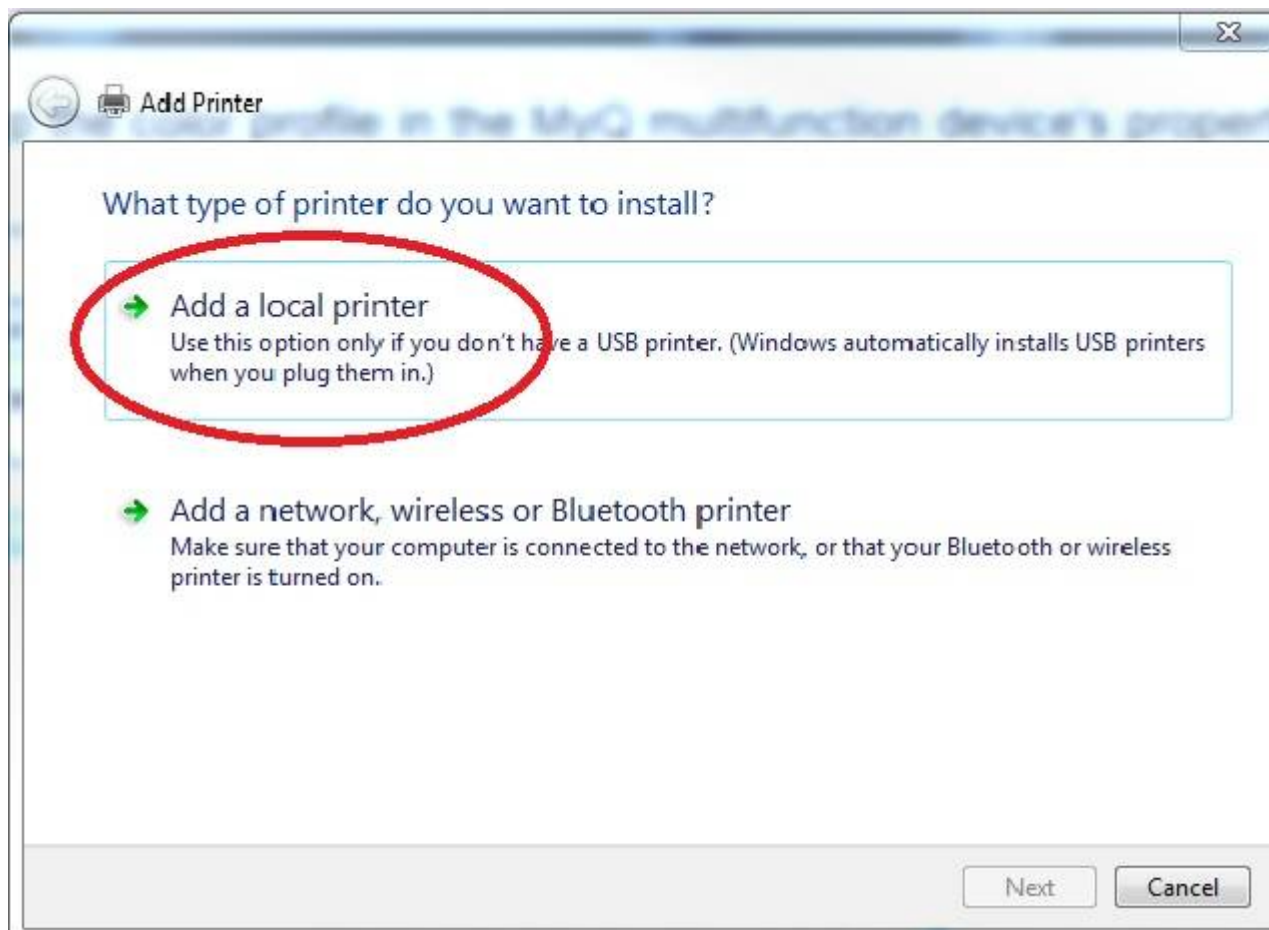
# Instructions for adding a Kyocera printer to user stations

**Important: notebook must be connected to WiFi residents !!!** (libairfree WiFi is not supported)

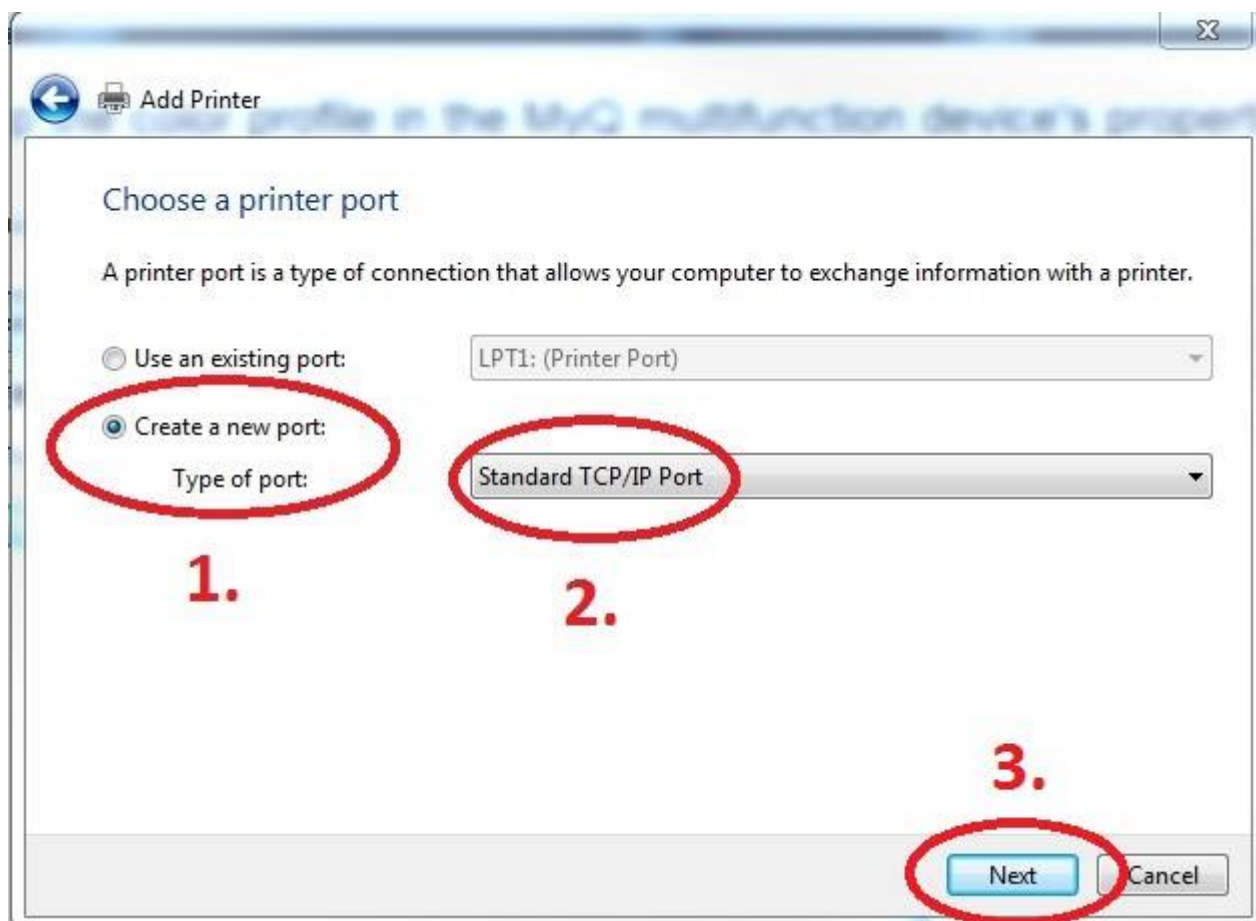
**Press Start button→ Devices and Printers → Add a Printer**



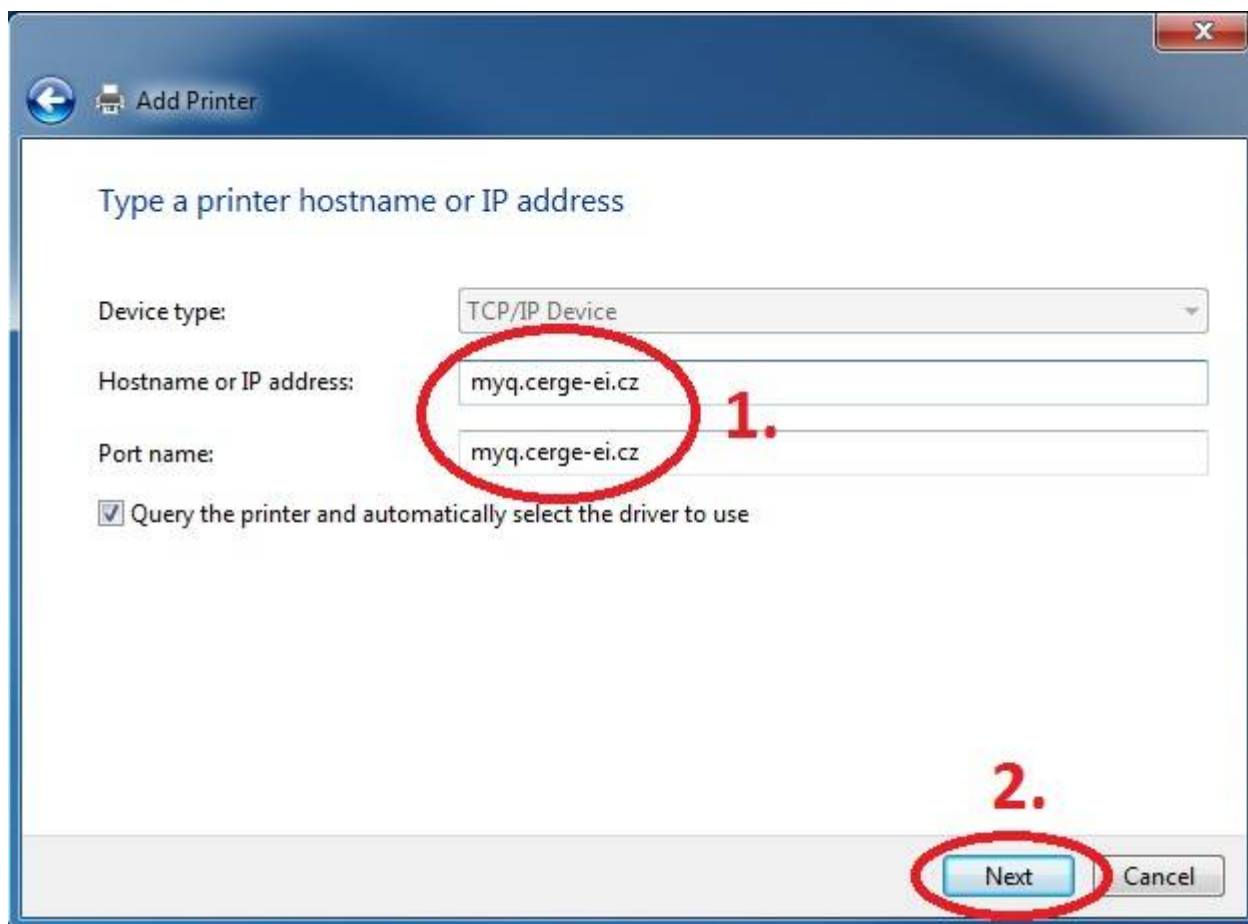
**Add a local printer**



### Create a new port: Standard TCP/IP Port



## Enter Hostname - myq.cerge-ei.cz



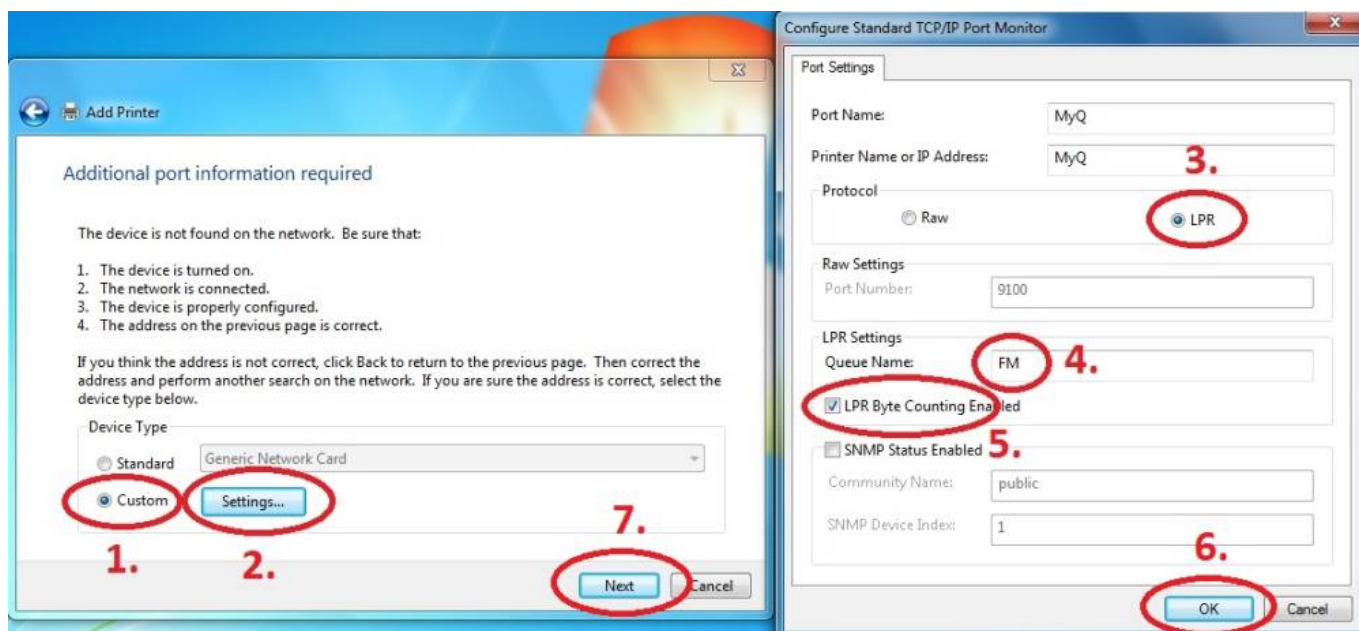
## Customize Settings

Important settings (check twice)

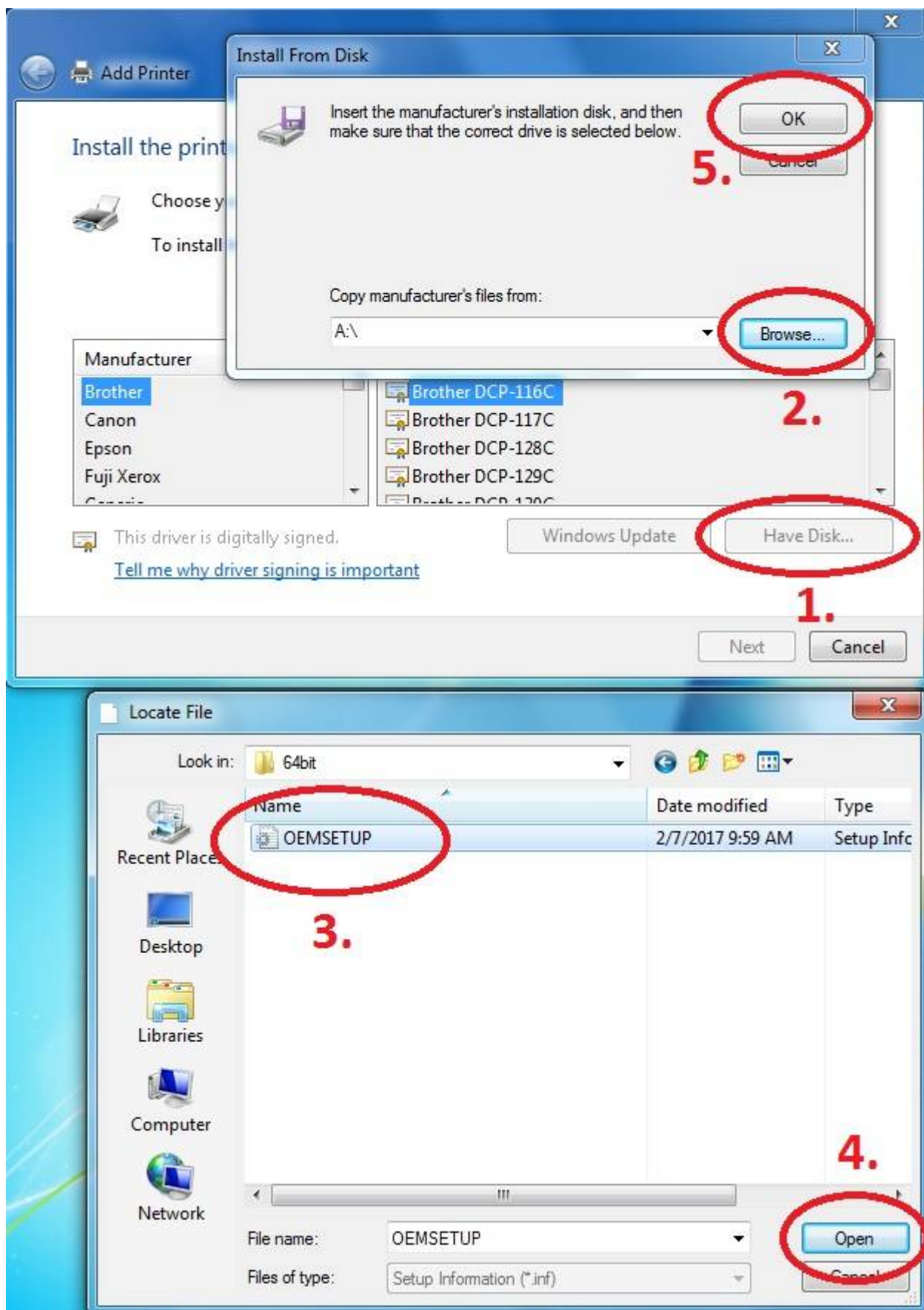


- Protocol: **LPR (LPD)**
- Queue name: **FM**
- [x] **LPR Byte Counting Enabled**

`lpd:myq.cerge-ei.cz/FM'`

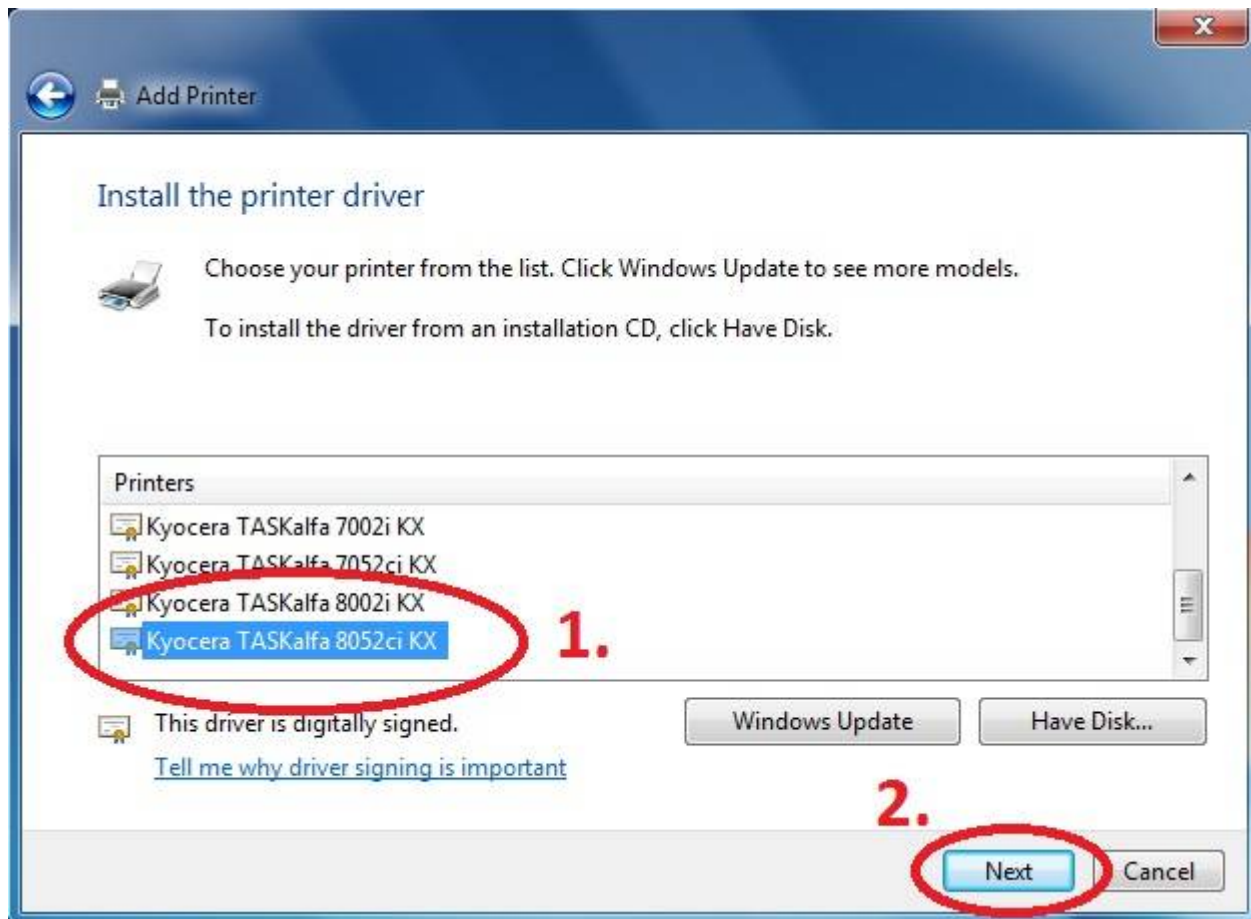


**Download driver and unzip it to the local folder (for example c:\driver\). Choose 32-bit or 64-bit version depending on your system: - 32-bit driver - 64-bit driver Mac OS: OS X 10.8 - 10.13 Mac OS X 10.5 and newer\*\* Press Have Disk... Navigate to the driver folder (for example c:\driver\64-bit\) and select "OEMSETUP".**

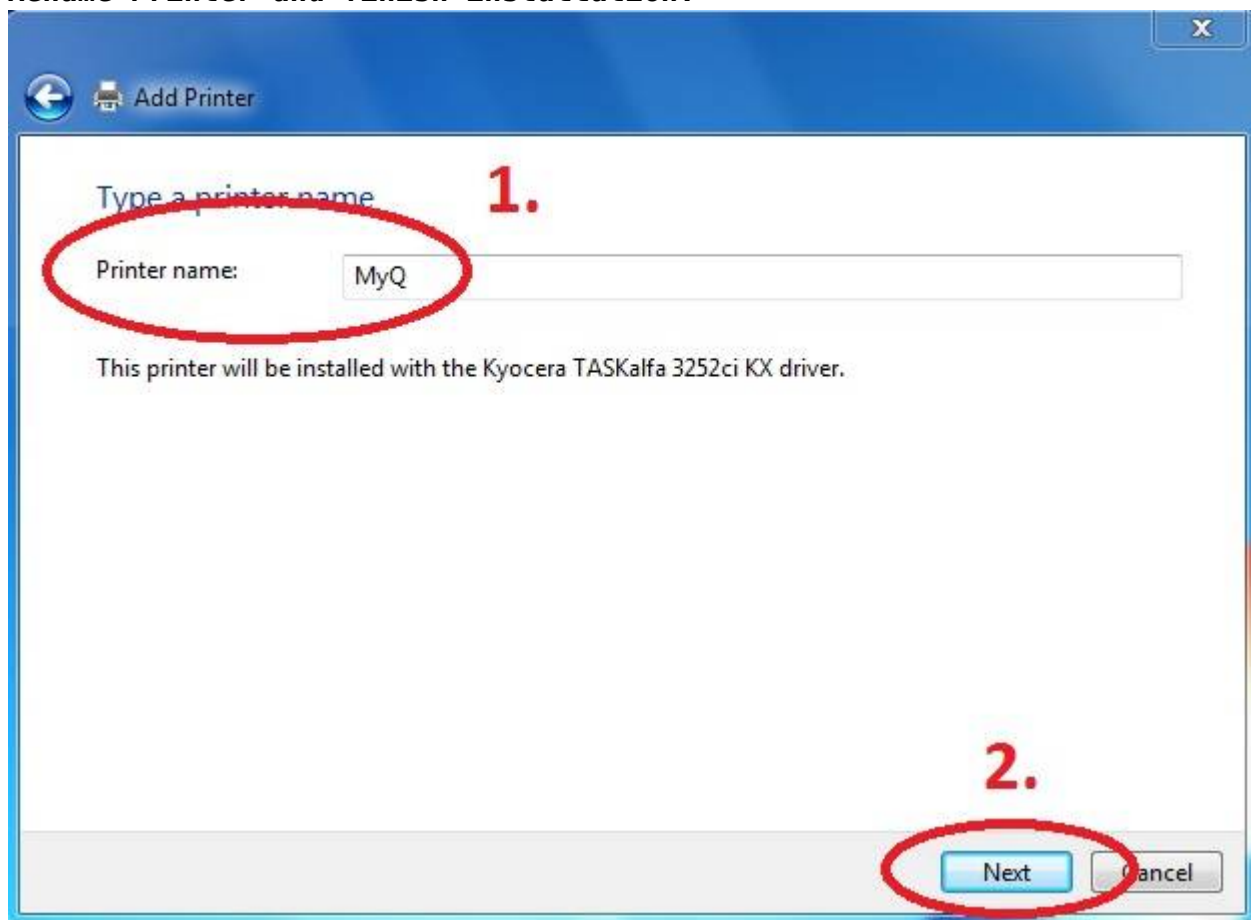


**Choose Kyocera TASKalfa 8052ci KX**





***Rename Printer and finish installation.***





After installing the printer, send your local username on the notebook to

**helpdesk@cerge-ei.cz** and we will allow printing for your account.

For Advanced settings go to: [https://itinfo.cerge-ei.cz/doku.php?id=public:print:kyocera\\_profile](https://itinfo.cerge-ei.cz/doku.php?id=public:print:kyocera_profile)\*\*

From:

<https://itinfo.cerge-ei.cz/> - **CERGE-EI Infrastructure Services**

Permanent link:

[https://itinfo.cerge-ei.cz/doku.php?id=public:print:myq\\_notebooks&rev=1578915291](https://itinfo.cerge-ei.cz/doku.php?id=public:print:myq_notebooks&rev=1578915291)

Last update: **2020-01-13 11:34**

