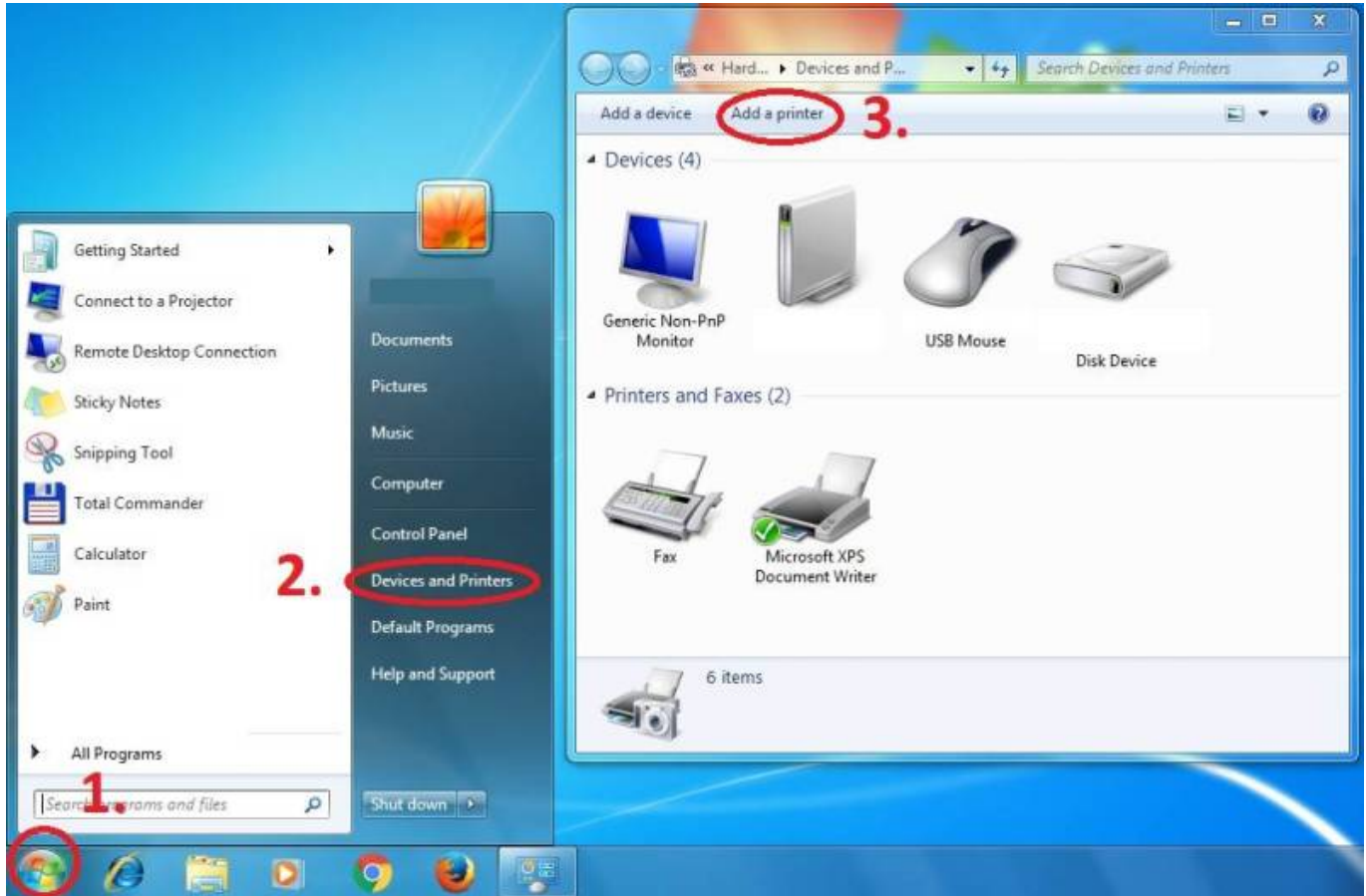


Instructions for adding a Kyocera printer to user stations

Important: notebook must be connected to WiFi residents !!! (libairfree WiFi is not supported)

Press Start button → Devices and Printers → Add a Printer



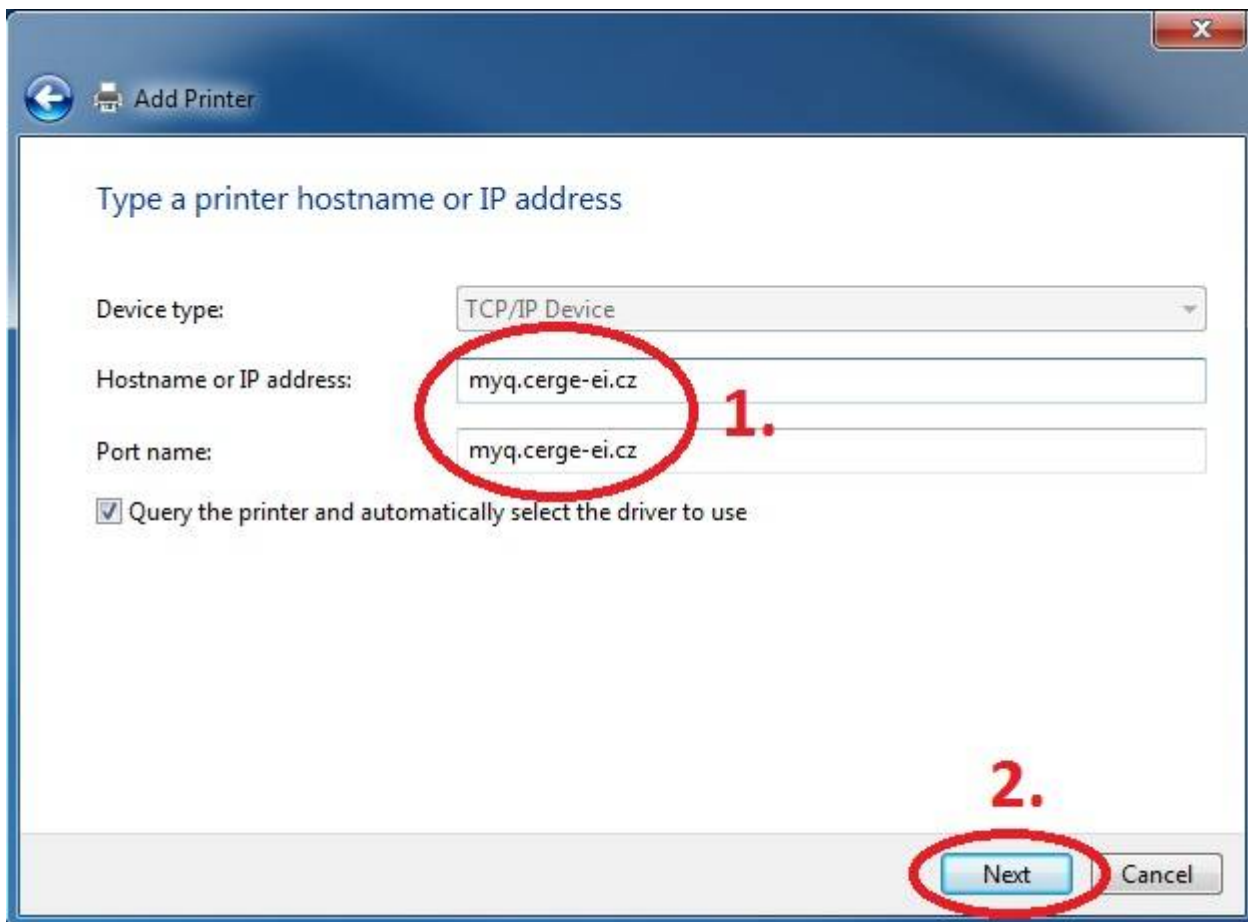
Add a local printer



Create a new port: Standard TCP/IP Port



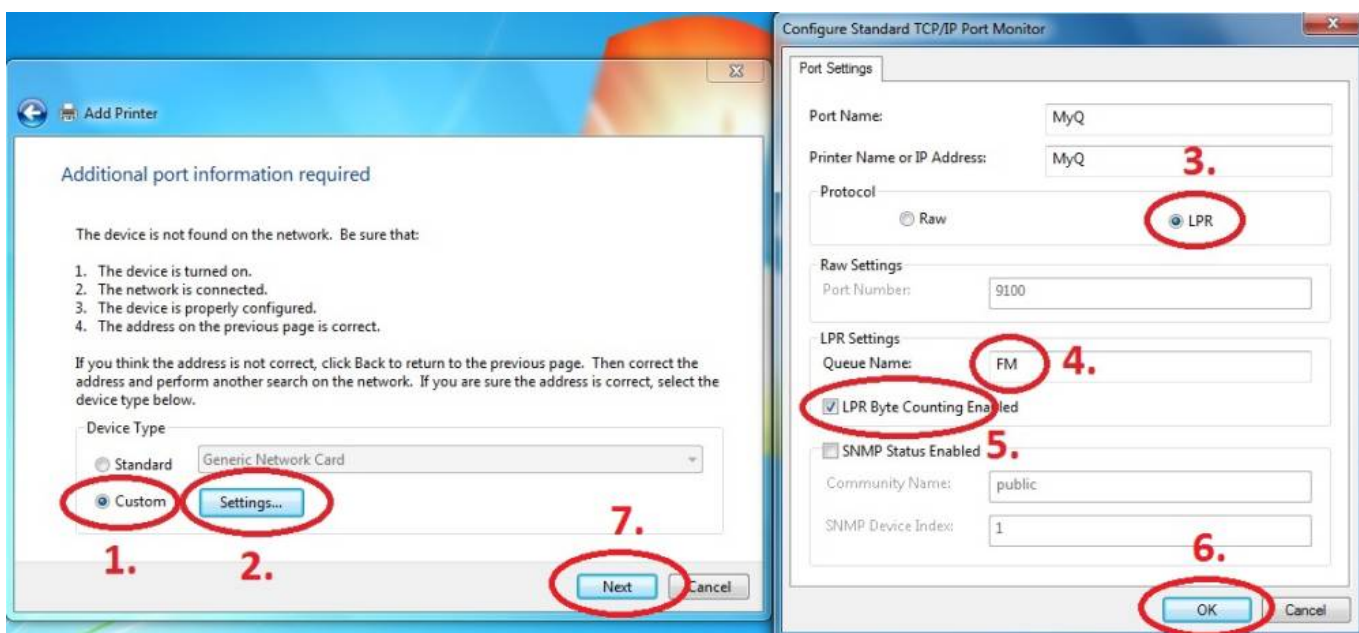
Enter Hostname - myq.cerge-ei.cz



Customize Settings

Important settings (check twice 😊)

- Protocol: **LPR**
- Queue name: **FM**
- [x] **LPR Byte Counting Enabled**



Download driver and unzip it to the local folder (for example c:\driver\). Choose 32-bit or 64-bit version depending on your system:

- 32-bit driver

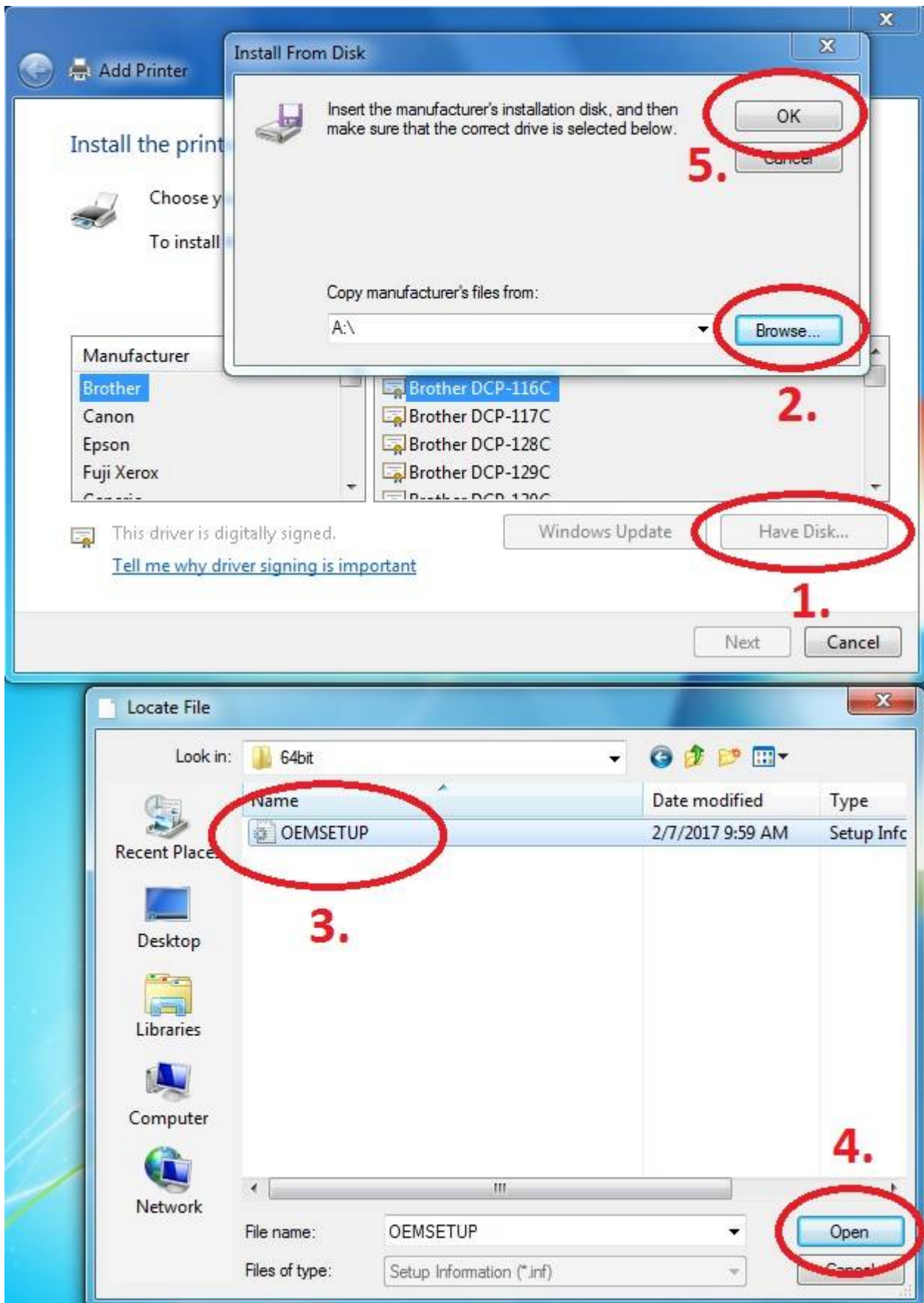
- 64-bit driver

Mac OS:

OS X 10.8 - 10.13

Mac OS X 10.5 and newer**

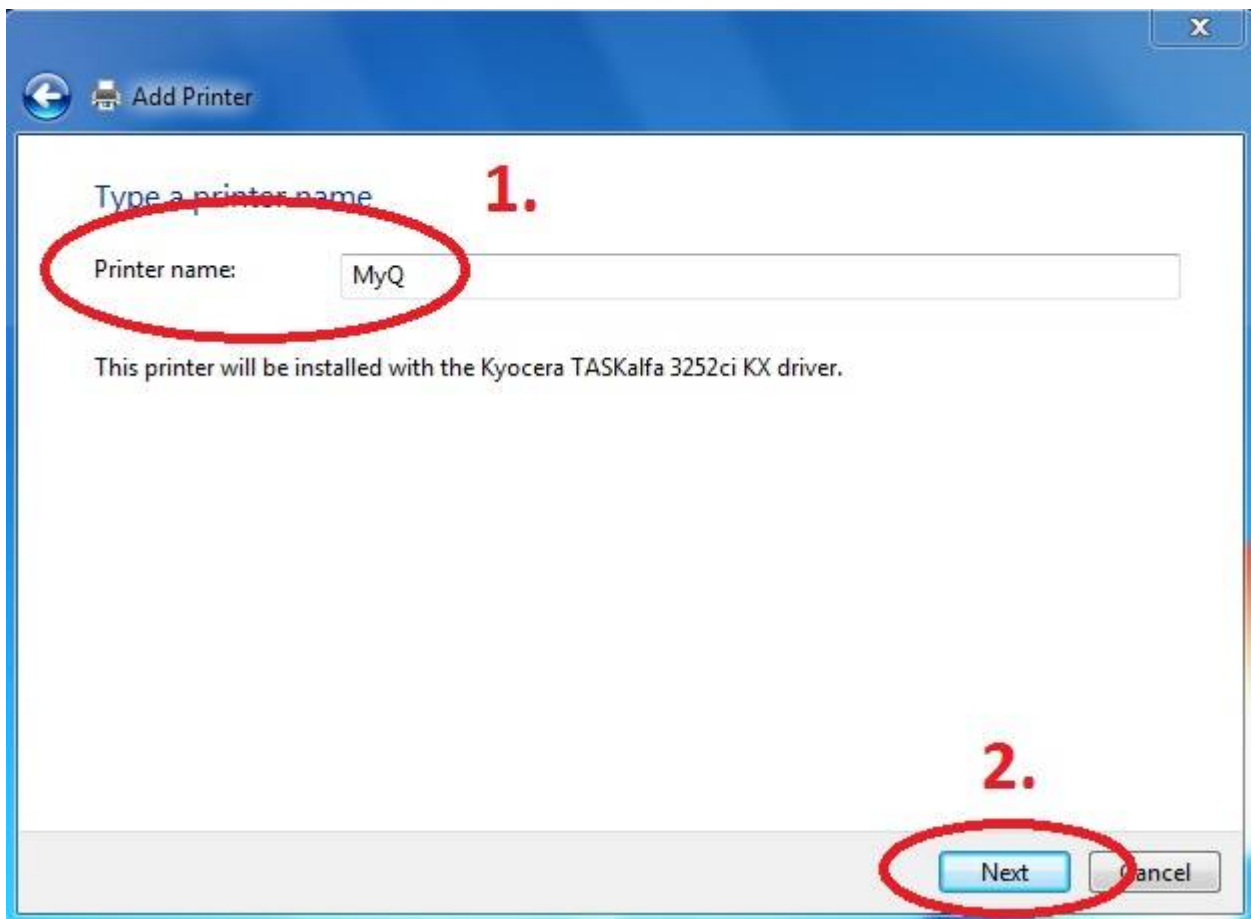
Press Have Disk... Navigate to the driver folder (for example c:\driver\64-bit\) and select "OEMSETUP".



Choose Kyocera TASKalfa 8052ci KX



Rename Printer and finish installation.



 After installing the printer, send your local username on the notebook to **helpdesk@cerge-ei.cz** and we will allow printing for your account.

For Advanced settings go to:

https://itinfo.cerge-ei.cz/doku.php?id=public:print:kyocera_profile

From:
<https://itinfo.cerge-ei.cz/> - **CERGE-EI Infrastructure Services**

Permanent link:
https://itinfo.cerge-ei.cz/doku.php?id=public:print:myq_notebooks&rev=1553693818

Last update: **2019-03-27 13:36**

