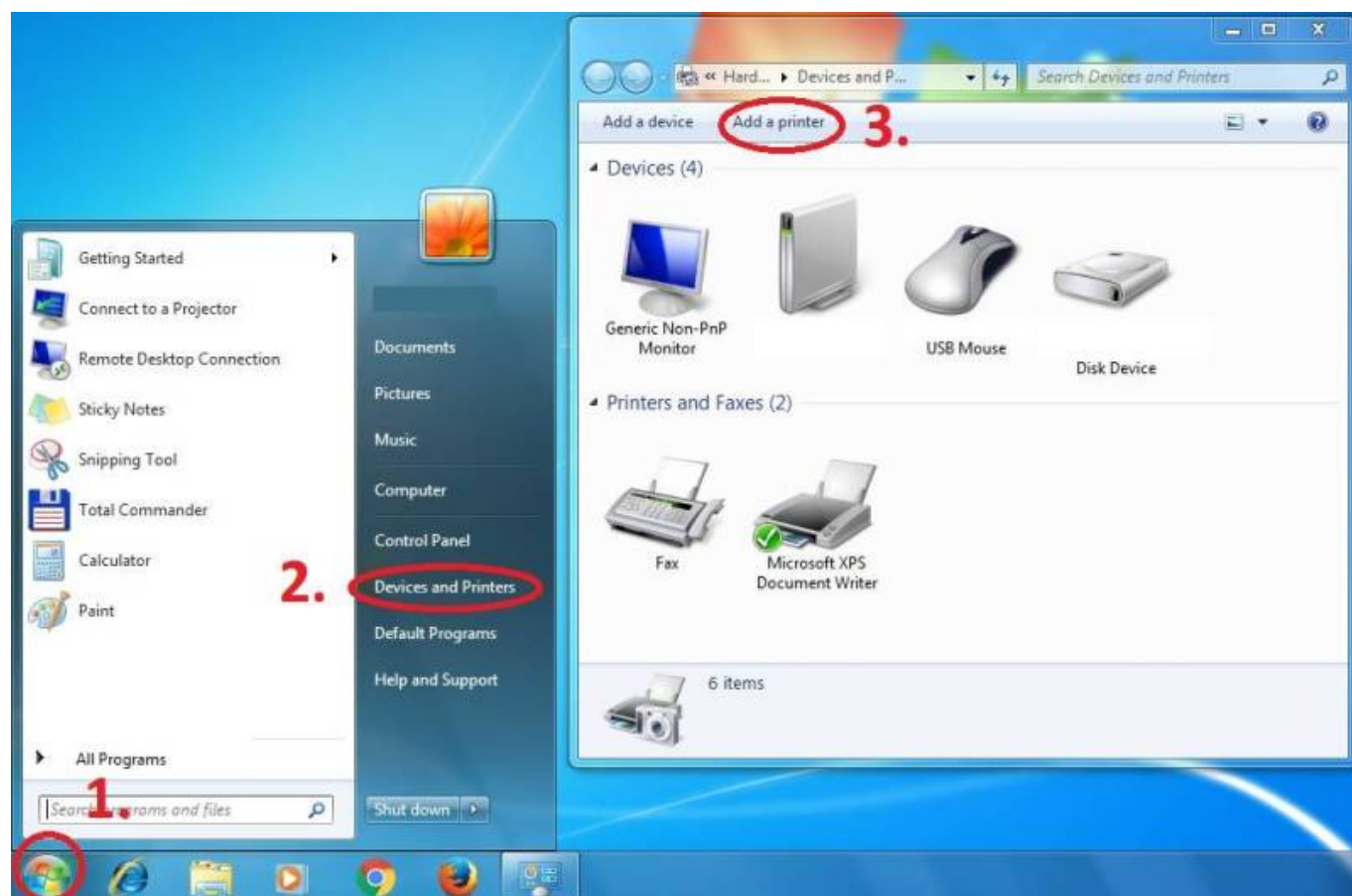


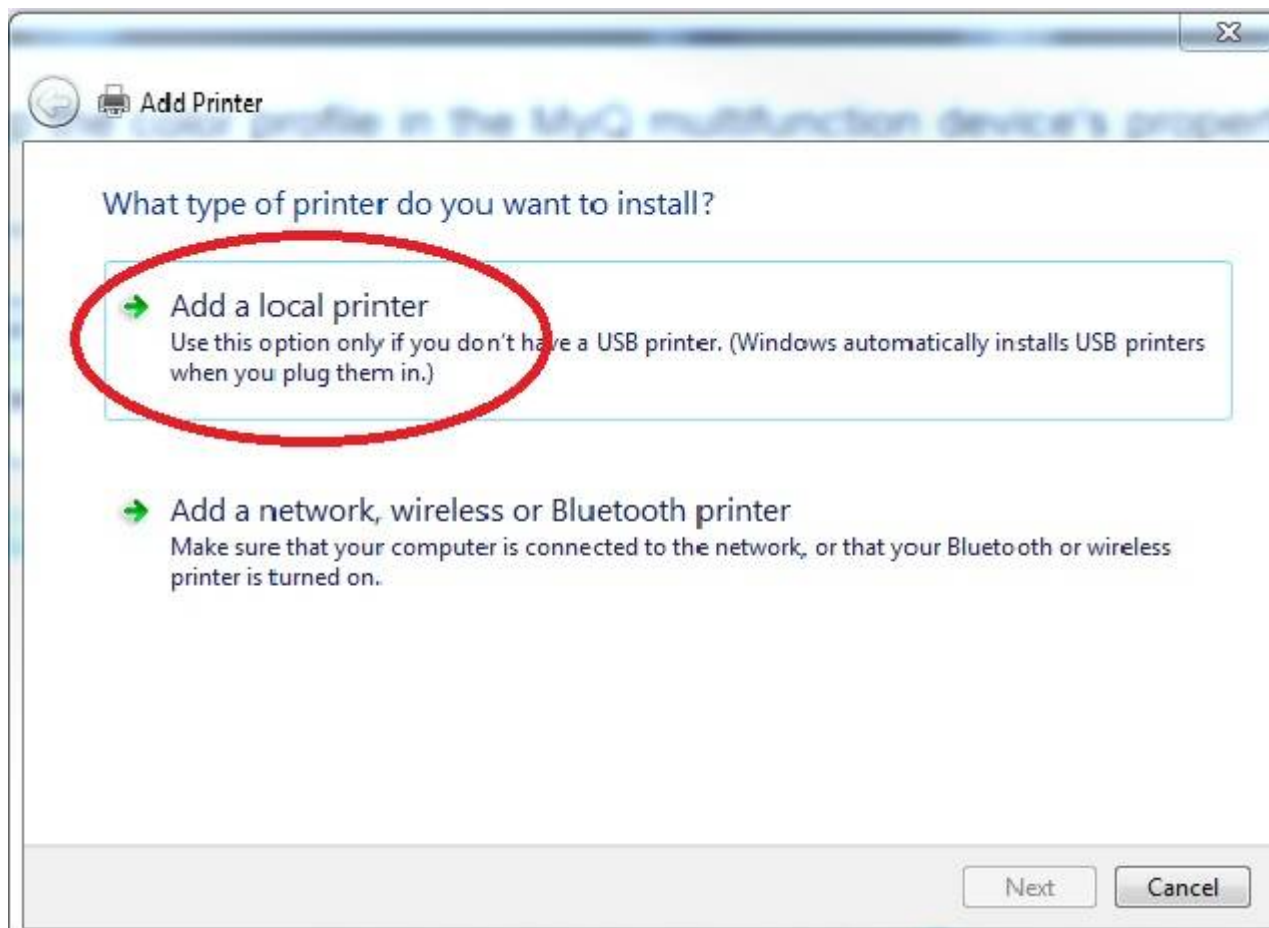
Instructions for adding a Kyocera printer to user stations

Important: notebook must be connected to WiFi residents !!! (libairfree WiFi is not supported)

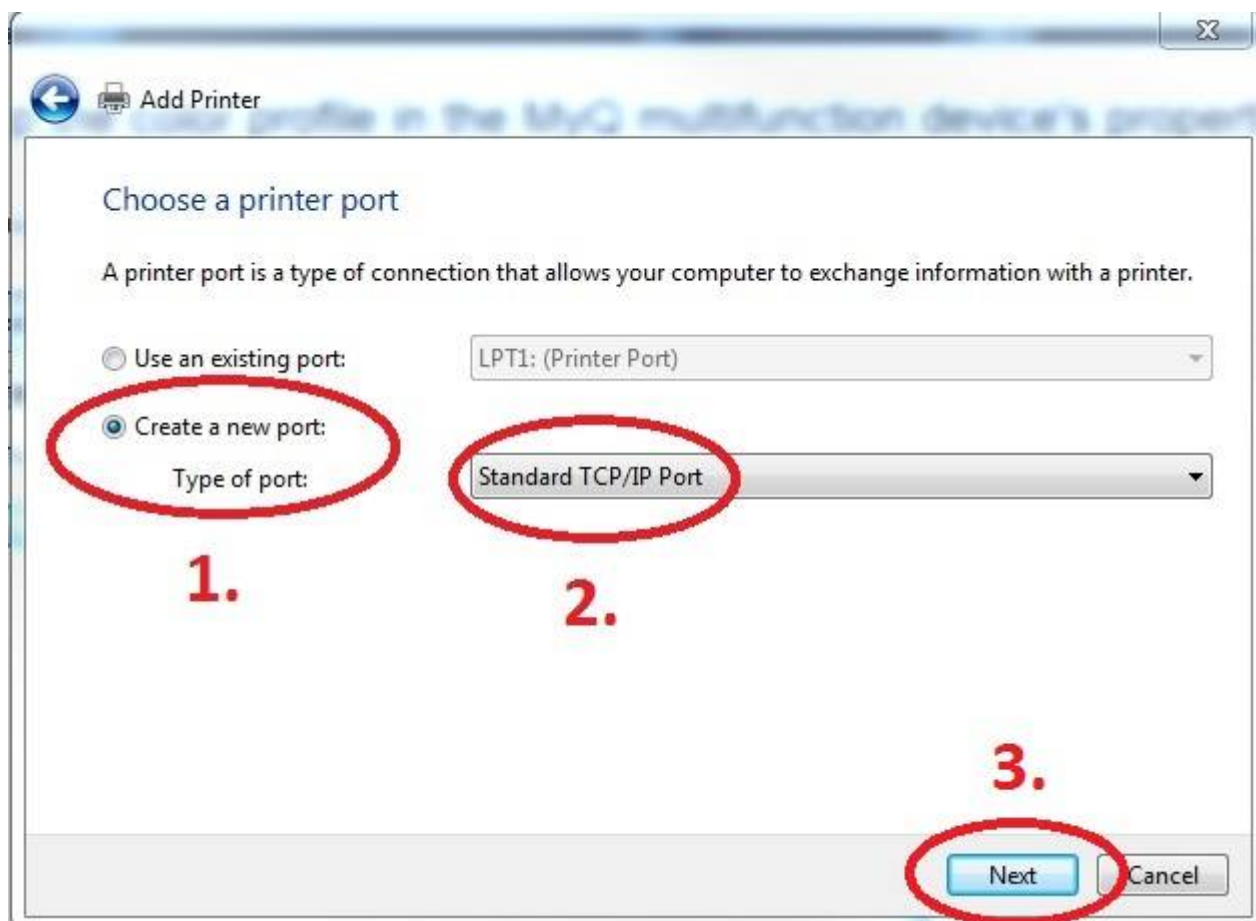
Press Start button→ Devices and Printers → Add a Printer



Add a local printer



Create a new port: Standard TCP/IP Port



Enter Hostname - MyQ or myq.cerge-ei.cz

The screenshot shows the 'Add Printer' wizard window. The title bar says 'Add Printer'. The main heading is 'Type a printer hostname or IP address'. Below this, there are three input fields: 'Device type' (set to 'TCP/IP Device'), 'Hostname or IP address' (containing 'MyQ'), and 'Port name' (containing 'MyQ'). A red circle highlights the 'MyQ' text in the 'Hostname or IP address' field, with a red '1.' next to it. Below these fields is a checkbox labeled 'Query the printer and automatically select the driver to use', which is checked. At the bottom right, there are 'Next' and 'Cancel' buttons. A red circle highlights the 'Next' button, with a red '2.' next to it.

Customize Settings

Important settings (check twice)



- Protocol: **LPR**
- Queue name: **FM**
- [x] **LPR Byte Counting Enabled**

The first screenshot shows the 'Additional port information required' dialog box. It contains a list of four steps: 1. The device is turned on. 2. The network is connected. 3. The device is properly configured. 4. The address on the previous page is correct. Below this list, there is a section for 'Device Type' with 'Standard' and 'Custom' radio buttons. 'Custom' is selected, and a red circle highlights it with a red '1.'. Next to 'Custom' is a 'Settings...' button, also circled in red with a red '2.'. At the bottom right, there are 'Next' and 'Cancel' buttons. A red circle highlights the 'Next' button with a red '7.'. The second screenshot shows the 'Configure Standard TCP/IP Port Monitor' dialog box. It has several sections: 'Port Settings' with 'Port Name' (MyQ) and 'Printer Name or IP Address' (MyQ), both circled in red with a red '3.'; 'Protocol' with 'Raw' and 'LPR' radio buttons, where 'LPR' is selected and circled in red; 'Raw Settings' with 'Port Number' (9100); 'LPR Settings' with 'Queue Name' (FM), circled in red with a red '4.', and 'LPR Byte Counting Enabled' checked, circled in red with a red '5.'; 'SNMP Status Enabled' (unchecked); 'Community Name' (public); and 'SNMP Device Index' (1). At the bottom right, there are 'OK' and 'Cancel' buttons. A red circle highlights the 'OK' button with a red '6.'.

Download driver and unzip it to the local folder (for example c:\driver\). Choose 32-bit or 64-bit version depending on your system:

- 32-bit driver

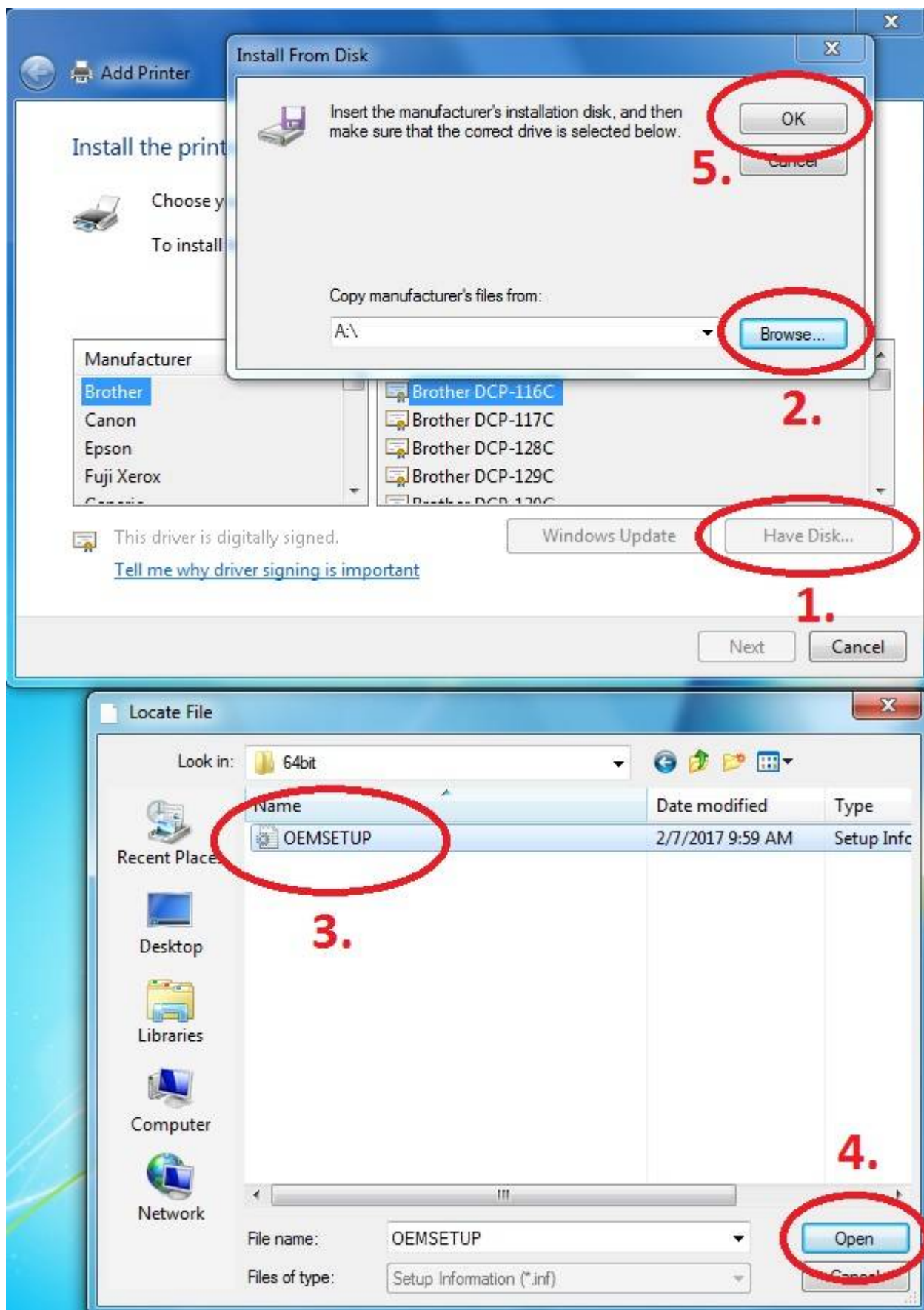
- 64-bit driver

Mac OS:

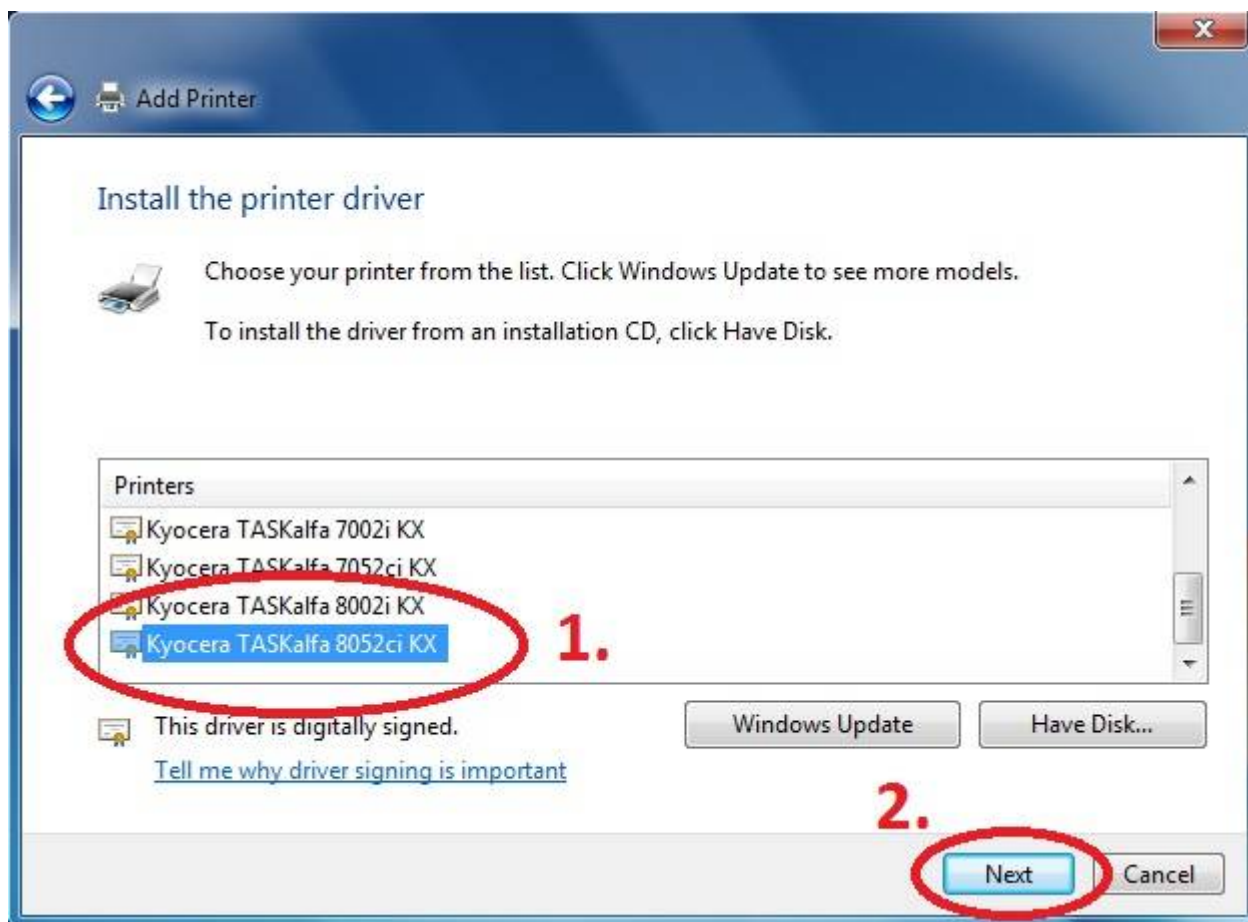
OS X 10.8 - 10.13

Mac OS X 10.5 and newer**

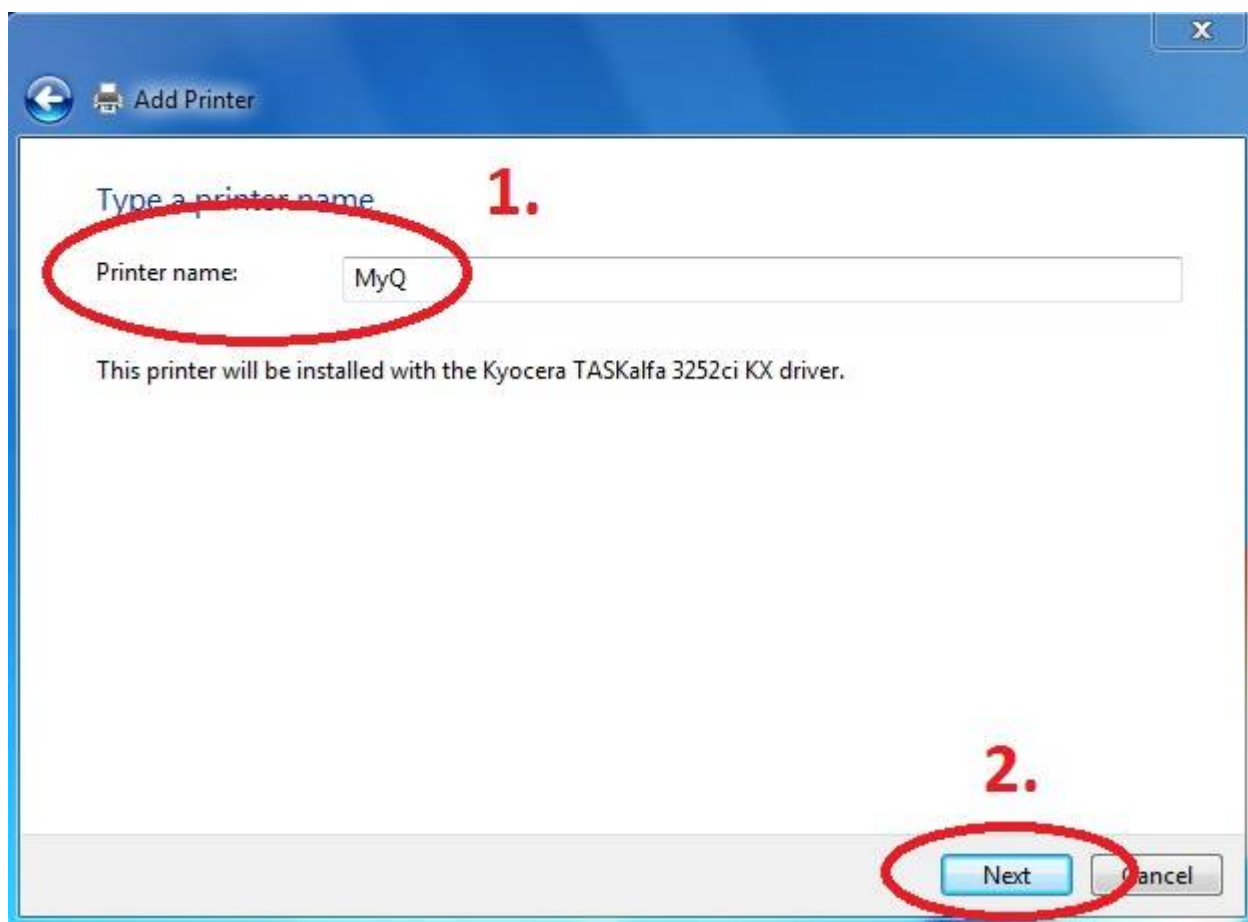
Press Have Disk... Navigate to the driver folder (for example c:\driver\64-bit\) and select **"OEMSETUP"**.



Choose Kyocera TASKalfa 8052ci KX



Rename Printer and finish installation.





After installing the printer, send your local username on the notebook to

helpdesk@cerge-ei.cz and we will allow printing for your account.

For Advanced settings go to:

https://itinfo.cerge-ei.cz/doku.php?id=public:print:kyocera_profile

From:

<https://itinfo.cerge-ei.cz/> - **CERGE-EI Infrastructure Services**

Permanent link:

https://itinfo.cerge-ei.cz/doku.php?id=public:print:myq_notebooks&rev=1549034016

Last update: **2019-02-01 15:13**

