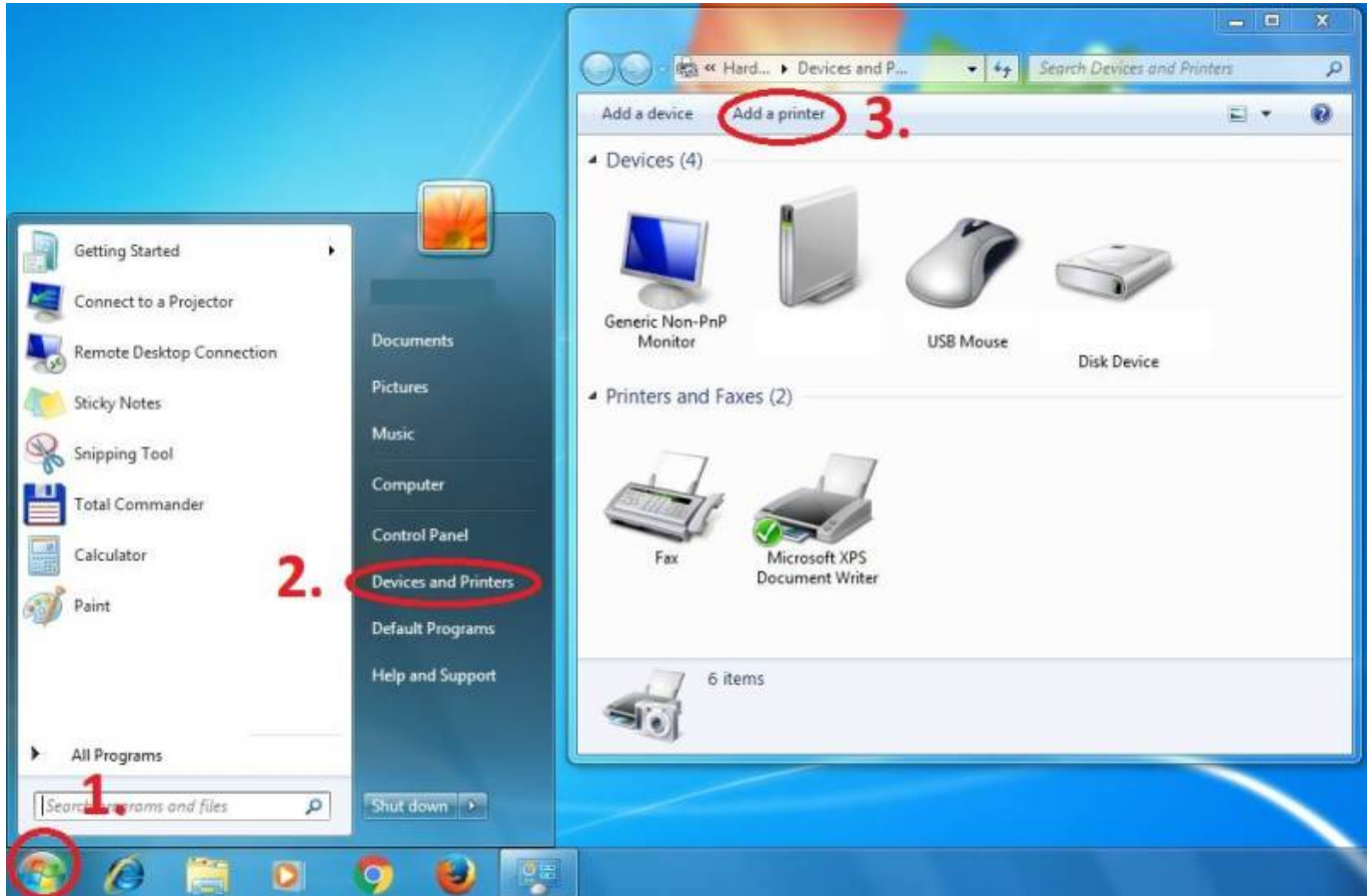


# Instructions for adding a Kyocera printer to user stations

**Important: notebook must be connected to WiFi residents !!!** (libairfree WiFi is not supported)

**Press Start button → Devices and Printers → Add a Printer**



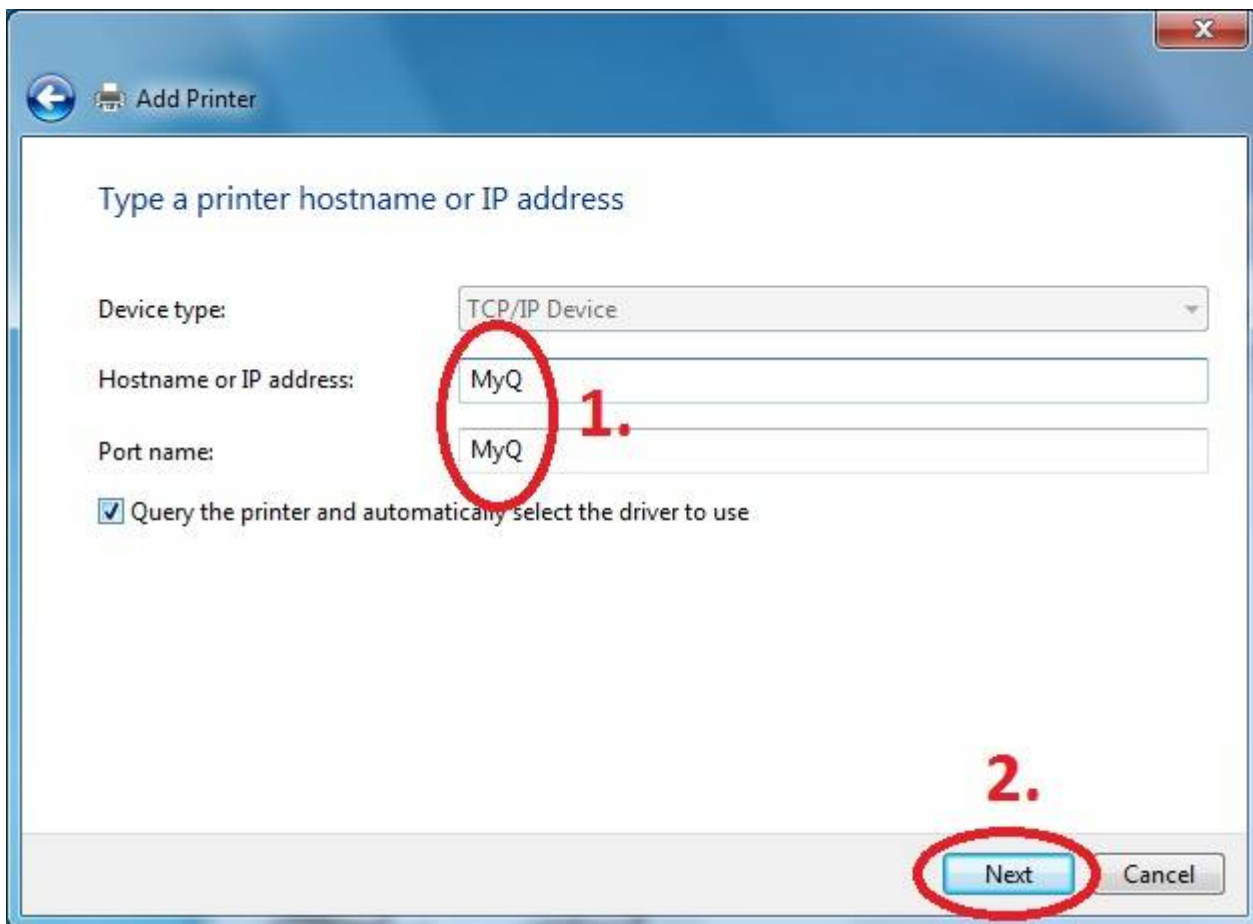
**Add a local printer**



### Create a new port: Standard TCP/IP Port



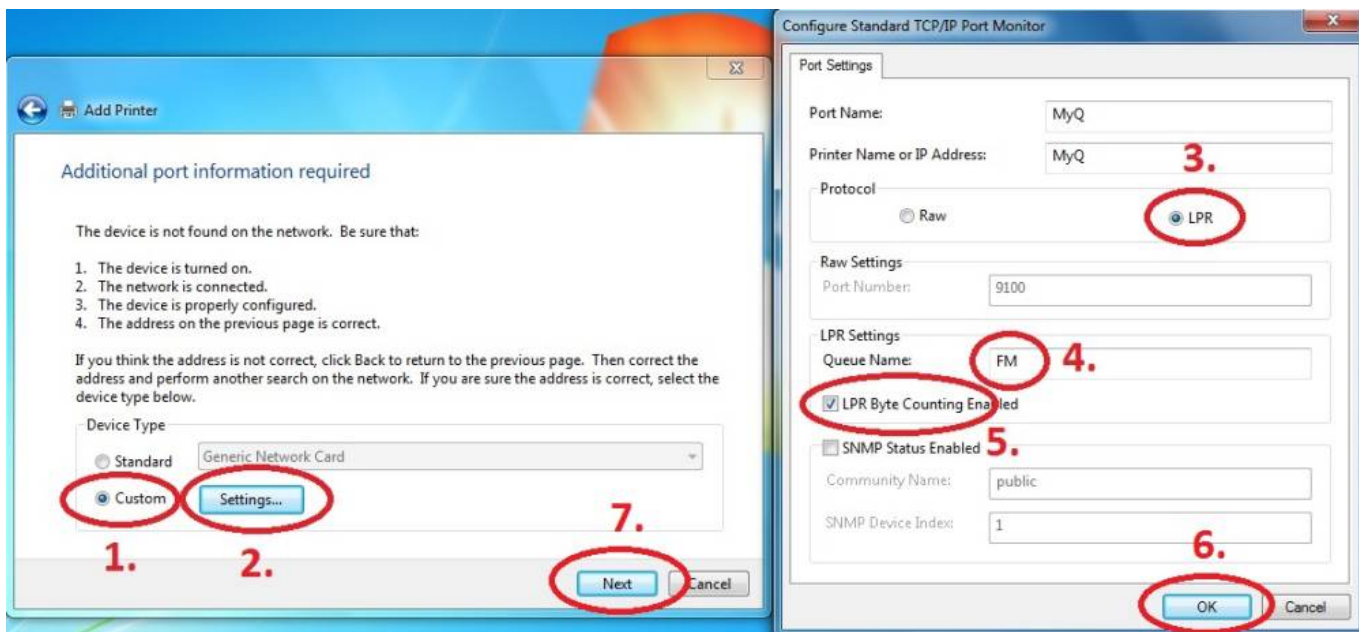
### Enter Hostname - MyQ or myq.cerge-ei.cz



### Customize Settings

Important settings (check twice 😊)

- Protocol: **LPR**
- Queue name: **FM**
- [x] **LPR Byte Counting Enabled**



**Download driver and unzip it to the local folder (for example c:\driver\). Choose 32-bit or 64-bit version depending on your system:**

**- 32-bit driver**

**- 64-bit driver**

**Mac OS X 10.5 and newer\*\***

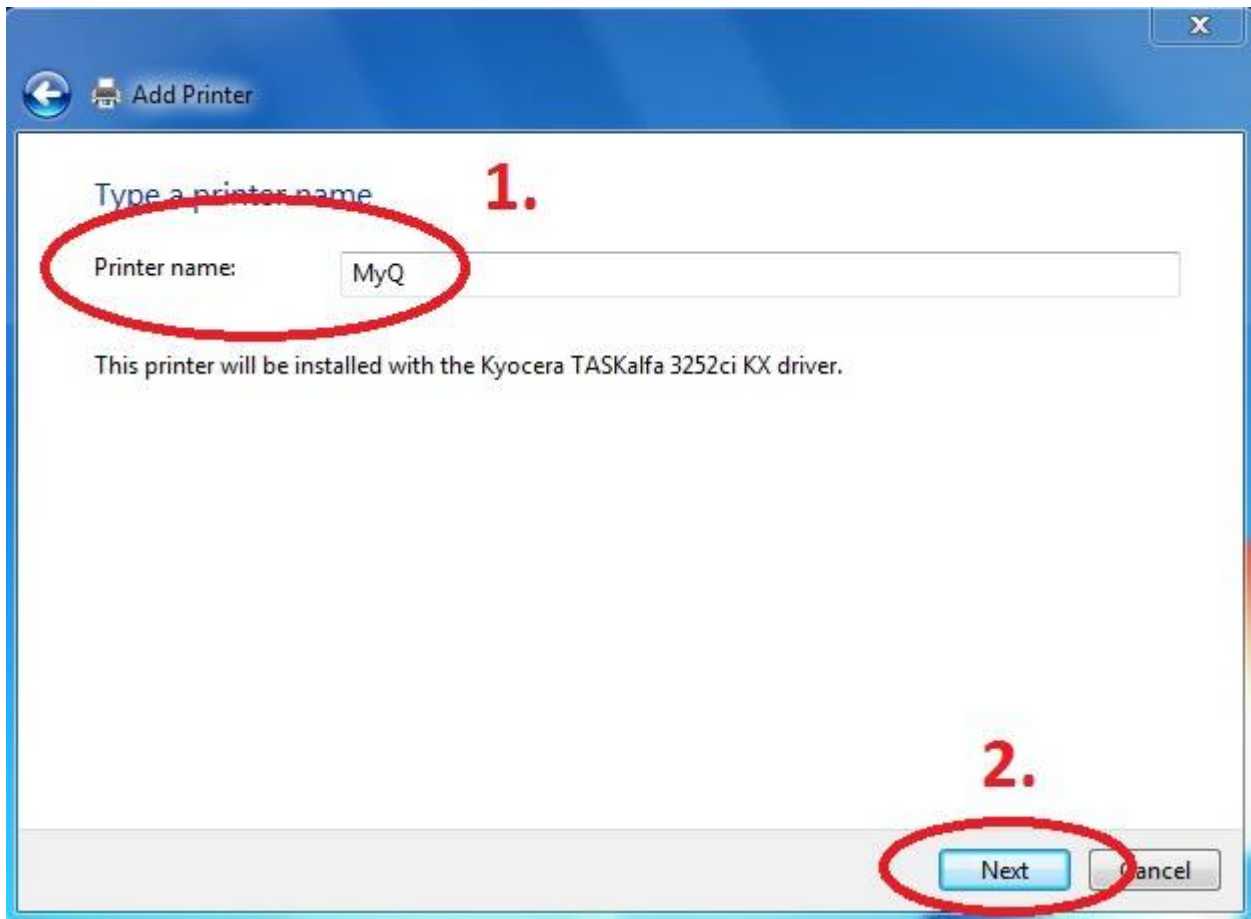
**Press Have Disk... Navigate to the driver folder (for example c:\driver\64-bit\) and select "OEMSETUP".**



**Choose Kyocera TASKalfa 8052ci KX**



**Rename Printer and finish installation.**



 After installing the printer, send your local username on the notebook to **helpdesk@cerge-ei.cz** and we will allow printing for your account.

**For Advanced settings go to:**

[https://itinfo.cerge-ei.cz/doku.php?id=public:print:kyocera\\_profile](https://itinfo.cerge-ei.cz/doku.php?id=public:print:kyocera_profile)

From:  
<https://itinfo.cerge-ei.cz/> - **CERGE-EI Infrastructure Services**

Permanent link:  
[https://itinfo.cerge-ei.cz/doku.php?id=public:print:myq\\_notebooks&rev=1548941339](https://itinfo.cerge-ei.cz/doku.php?id=public:print:myq_notebooks&rev=1548941339)

Last update: **2019-01-31 13:28**

