

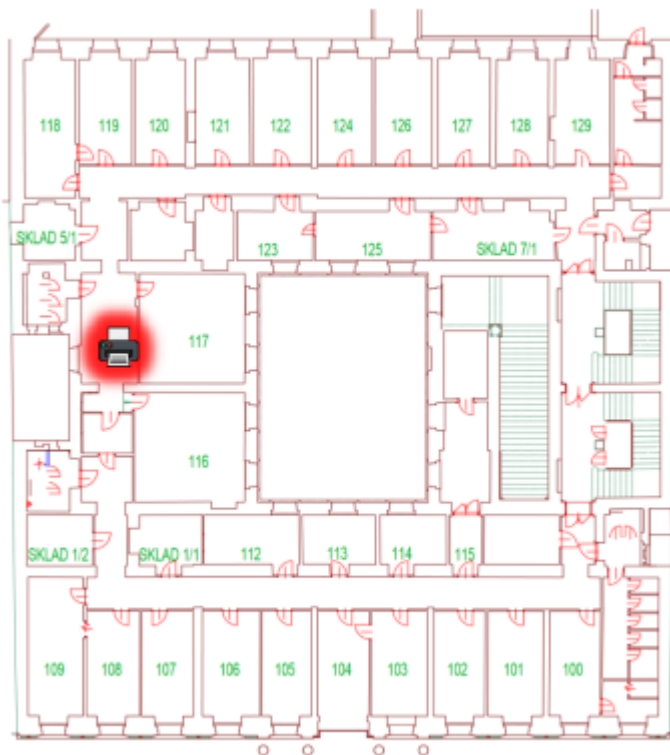
MyQ - Printers location and specifications

Download this One-Pager for info about relevant specifications

TASKalfa 4053ci - Next to PC lab 117 / In locker room next to office 326 / In UPCES study office 405 / In staff lounge 445

TASKalfa 8052ci- Facing office 312

TASKalfa 6053ci- Next to 440 staff lounge





From:
<https://itinfo.cerge-ei.cz/> - **CERGE-EI Infrastructure Services**

Permanent link:
https://itinfo.cerge-ei.cz/doku.php?id=public:print:myq_location&rev=1657881924

Last update: **2022-07-15 10:45**

