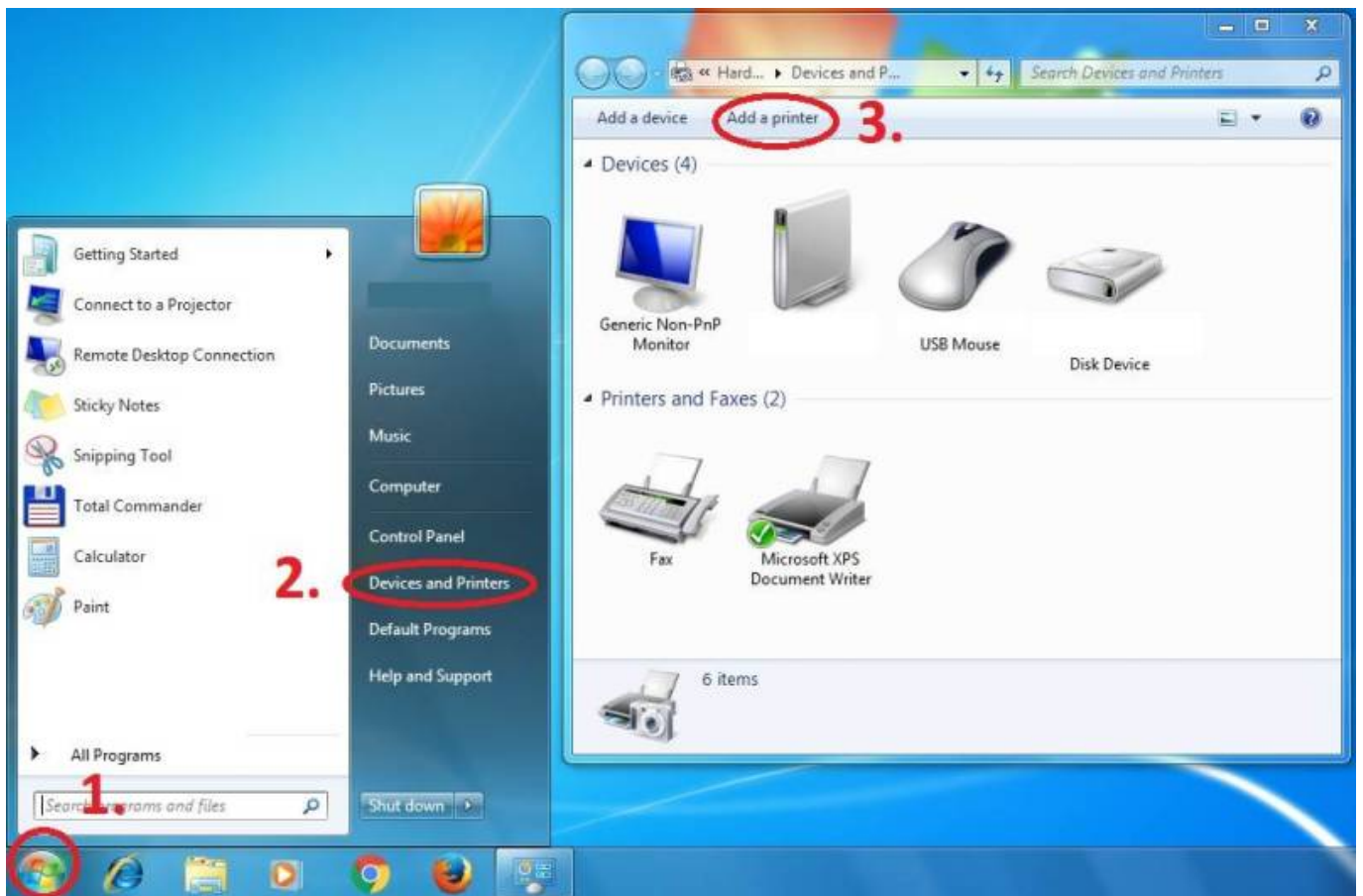


- For Cerge dektops
- For notebook connected via wifi

Instructions for adding a Kyocera printer to user stations

Press Start button → Devices and Printers → Add a Printer



Add a local printer



Create a new port: Standard TCP/IP Port



Enter Hostname - MyQ



Customize Settings

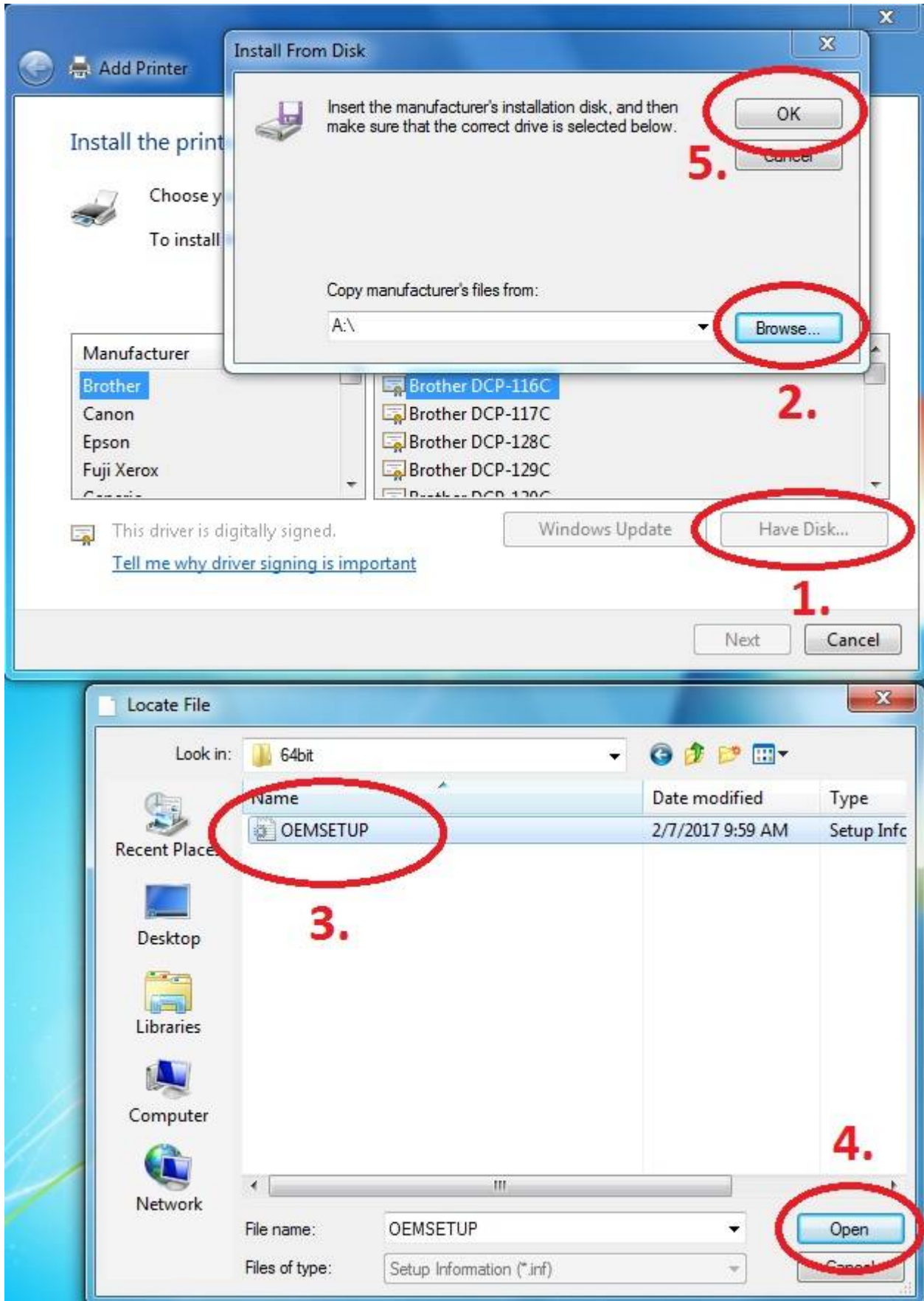


Download driver and unzip it to the local folder (for example c:\driver\). Choose 32-bit or 64-bit version depending on your system:

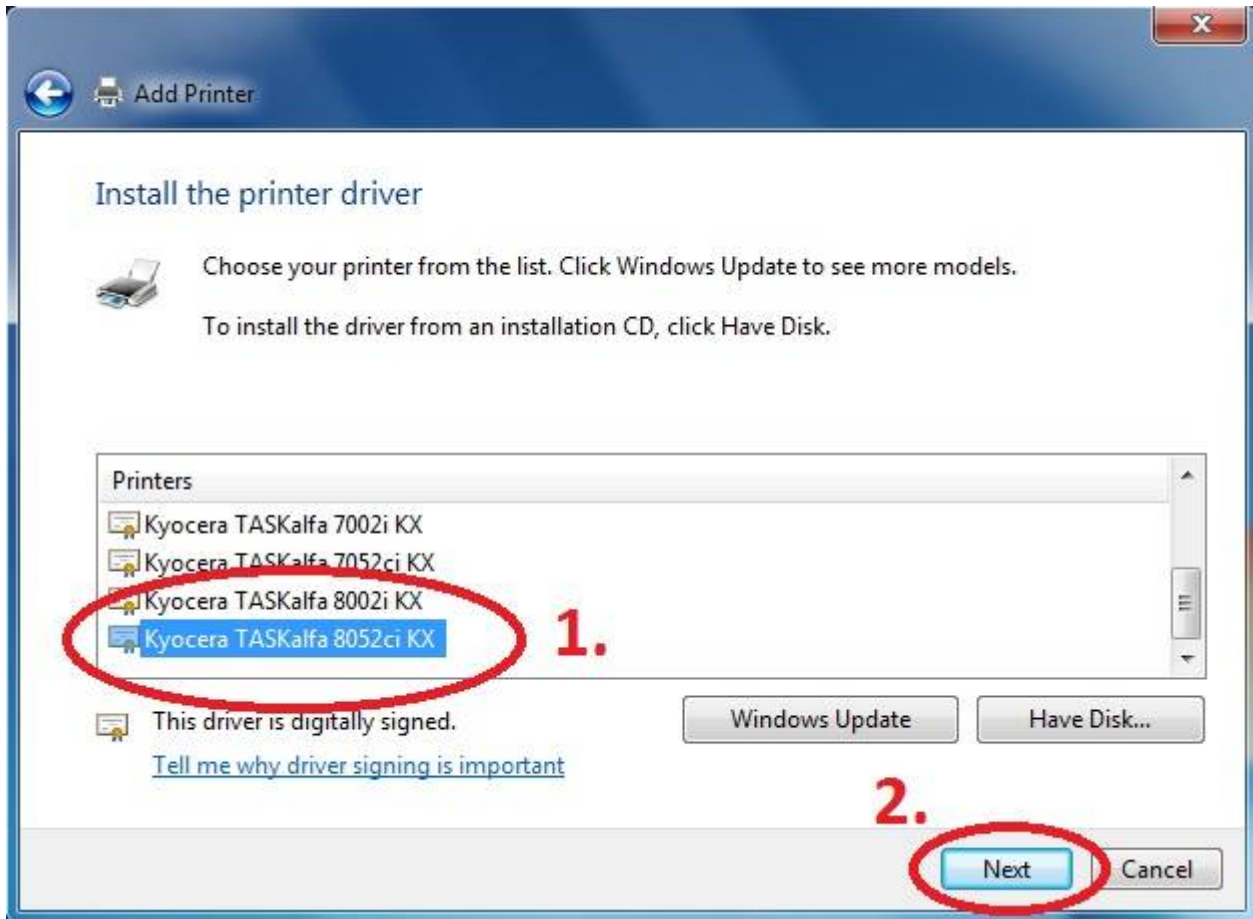
- 32-bit driver

- 64-bit driver

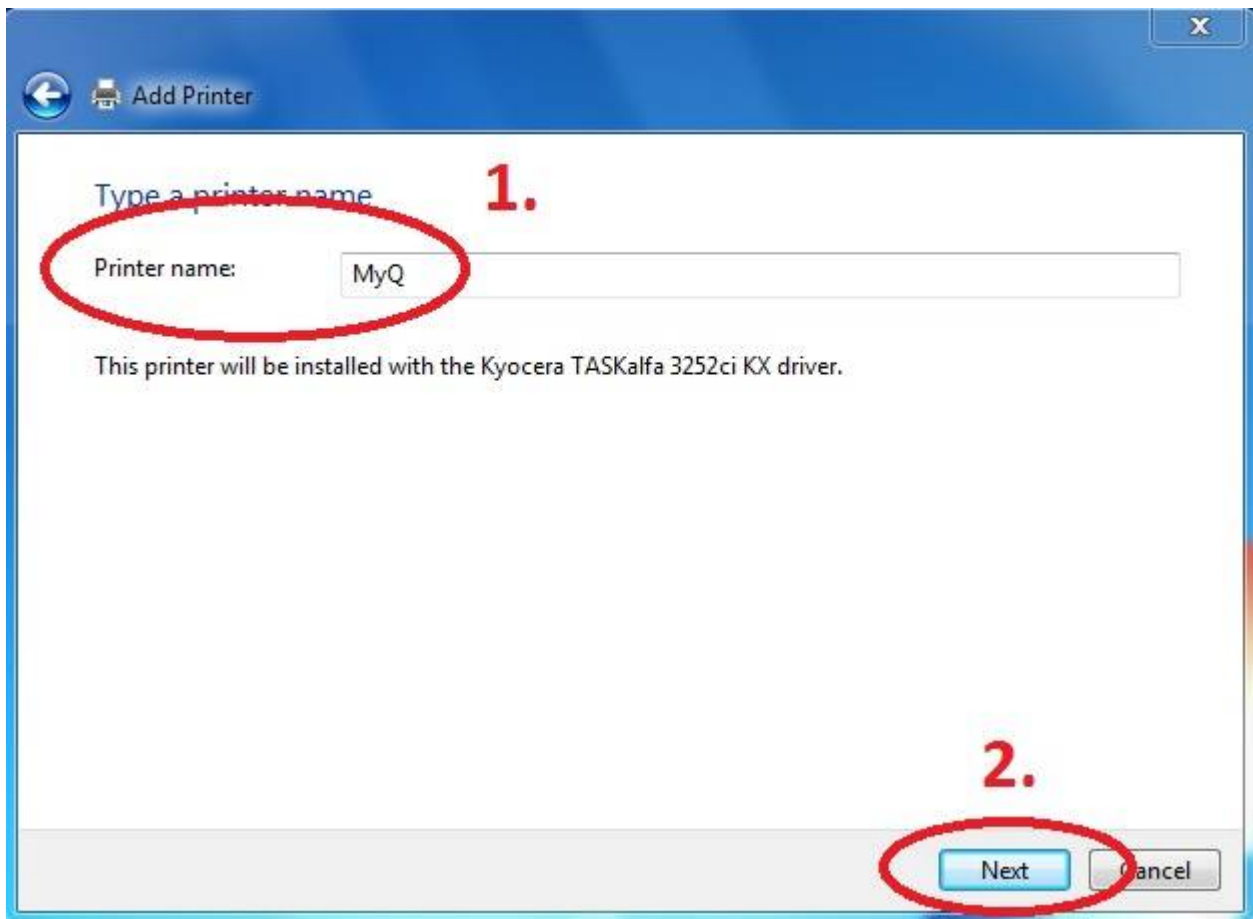
Press Have Disk... Navigate to the driver folder (for example c:\driver\64-bit\) and select **“OEMSETUP”**.



Choose Kyocera TASKalfa 8052ci KX



Rename Printer and finish installation.





After installing the printer, send your username to

helpdesk@cerge-ei.cz and we will enable your account for printing.

For Advanced settings go to:

https://itinfo.cerge-ei.cz/doku.php?id=public:print:kyocera_profile

From:

<https://itinfo.cerge-ei.cz/> - **CERGE-EI Infrastructure Services**

Permanent link:

https://itinfo.cerge-ei.cz/doku.php?id=public:print:myq_install&rev=1515667926

Last update: **2018-01-11 10:52**

