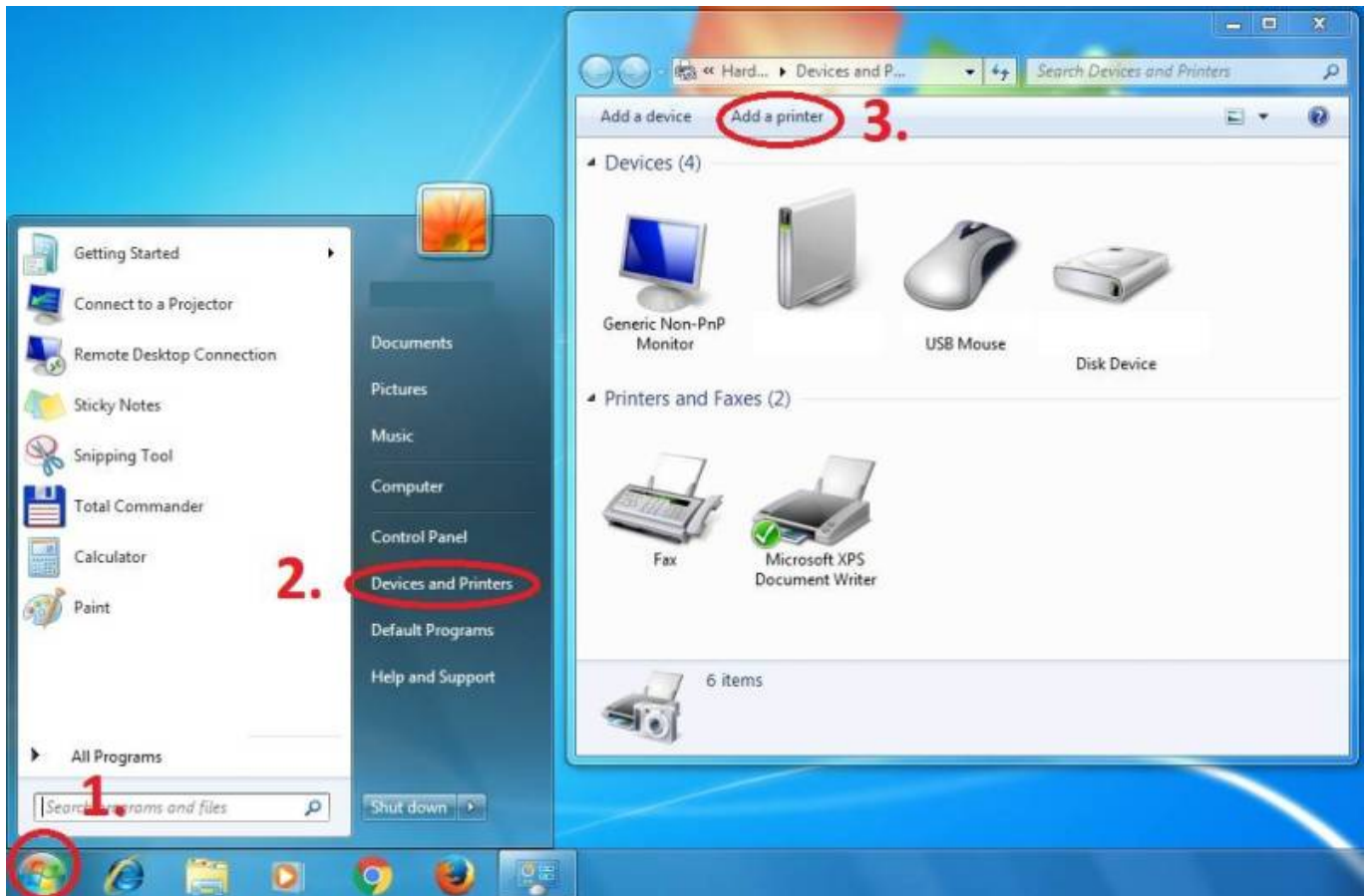


- For Cerge dektops

# Instructions for adding a Kyocera printer to user stations

Press Start button → Devices and Printers → Add a Printer



Add a local printer



### Create a new port: Standard TCP/IP Port



### Enter Hostname - MyQ



### Customize Settings



Download driver and unzip it to the local folder (for example c:\driver\). Choose 32-bit or 64-bit version depending on your system:

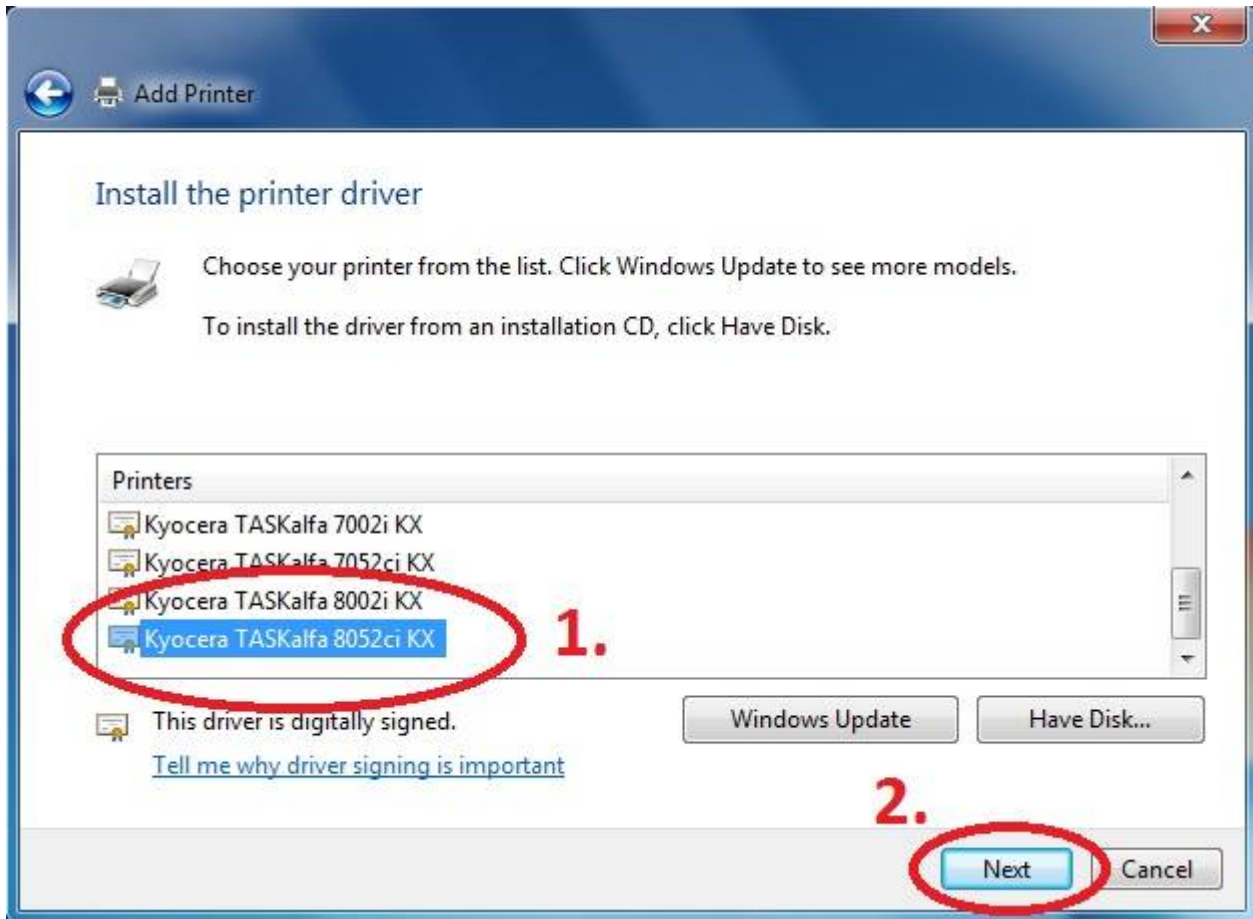
- 32-bit driver

- 64-bit driver

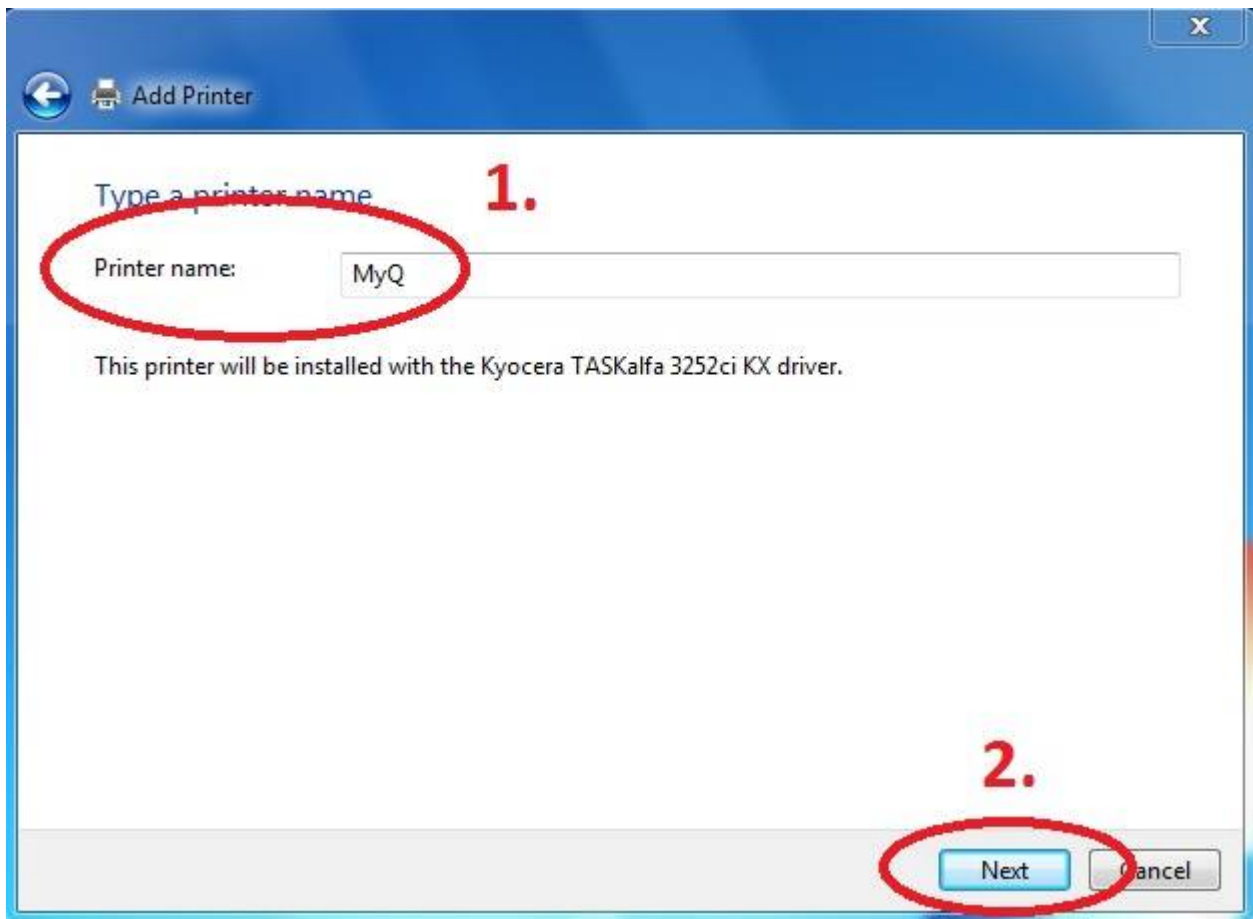
**Press Have Disk... Navigate to the driver folder (for example c:\driver\64-bit\)** and select **“OEMSETUP”**.




**Choose Kyocera TASKalfa 8052ci KX**



**Rename Printer and finish installation.**



 After installing the printer, send your username to **helpdesk@cerge-ei.cz** and we will enable your account for printing.

**For Advanced settings go to:**

[https://itinfo.cerge-ei.cz/doku.php?id=public:print:kyocera\\_profile](https://itinfo.cerge-ei.cz/doku.php?id=public:print:kyocera_profile)

From:

<https://itinfo.cerge-ei.cz/> - **CERGE-EI Infrastructure Services**

Permanent link:

[https://itinfo.cerge-ei.cz/doku.php?id=public:print:myq\\_install&rev=1515667619](https://itinfo.cerge-ei.cz/doku.php?id=public:print:myq_install&rev=1515667619)

Last update: **2018-01-11 10:46**

