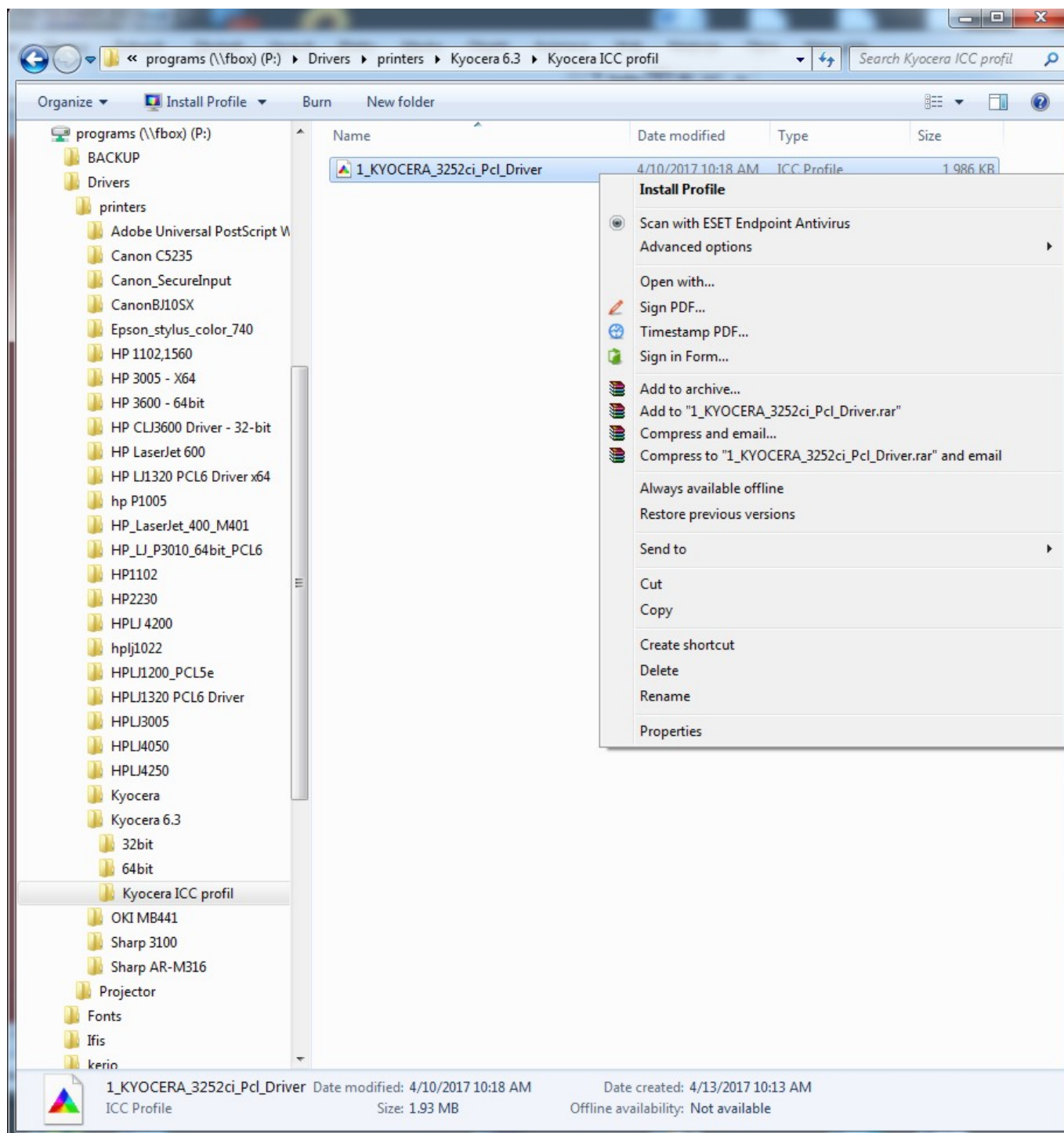


# How to Use a Color Profile on MyQ Multifunction Devices

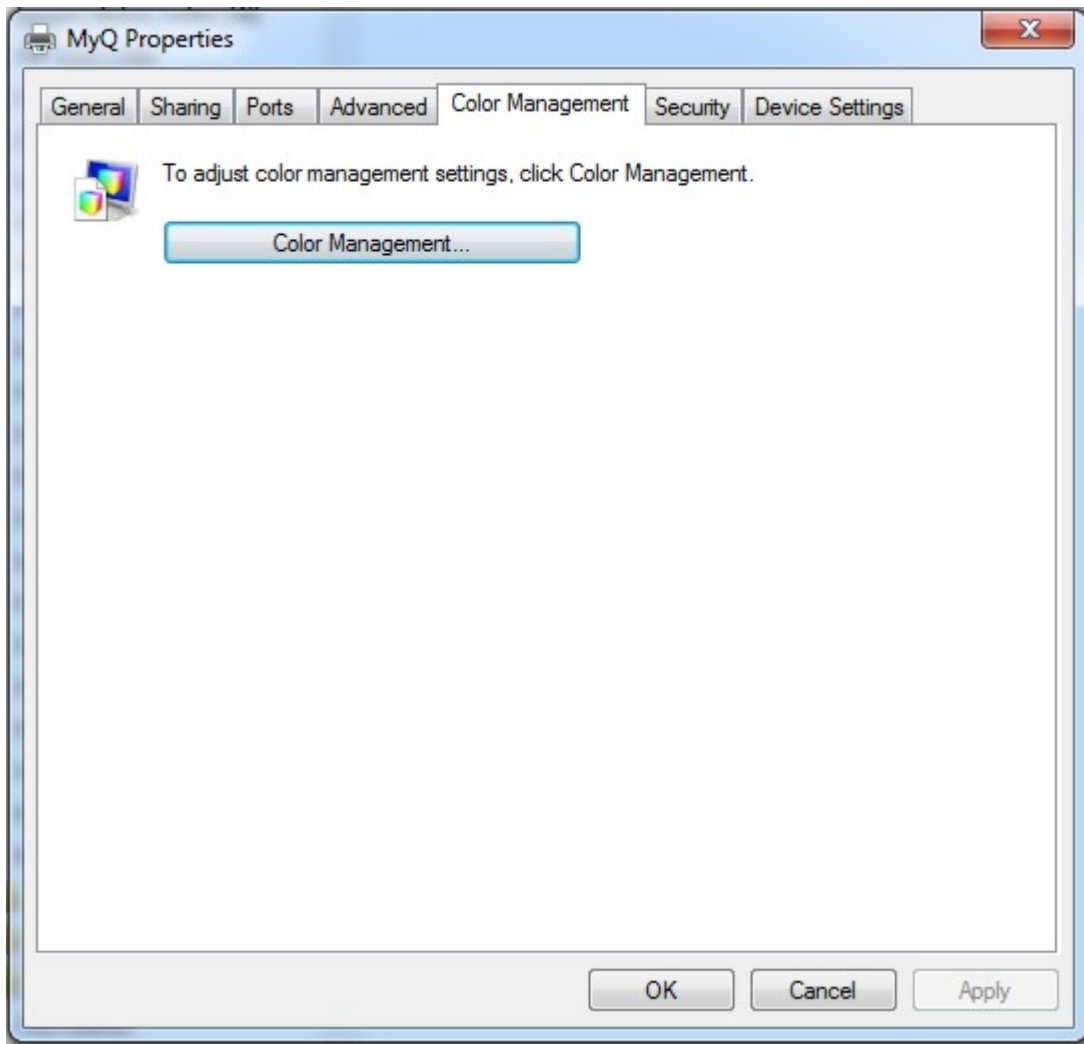
## 1. Install the profile driver in Windows

Find the respective profile **1\_KYOCERA\_3252ci\_Pcl\_Driver** on \\fbox\programs\drivers\printers\kyocera 6.3\Kyocera ICC profil and install it in your Windows operating system.



## 2. Set up the color profile in the MyQ multifunction device's properties

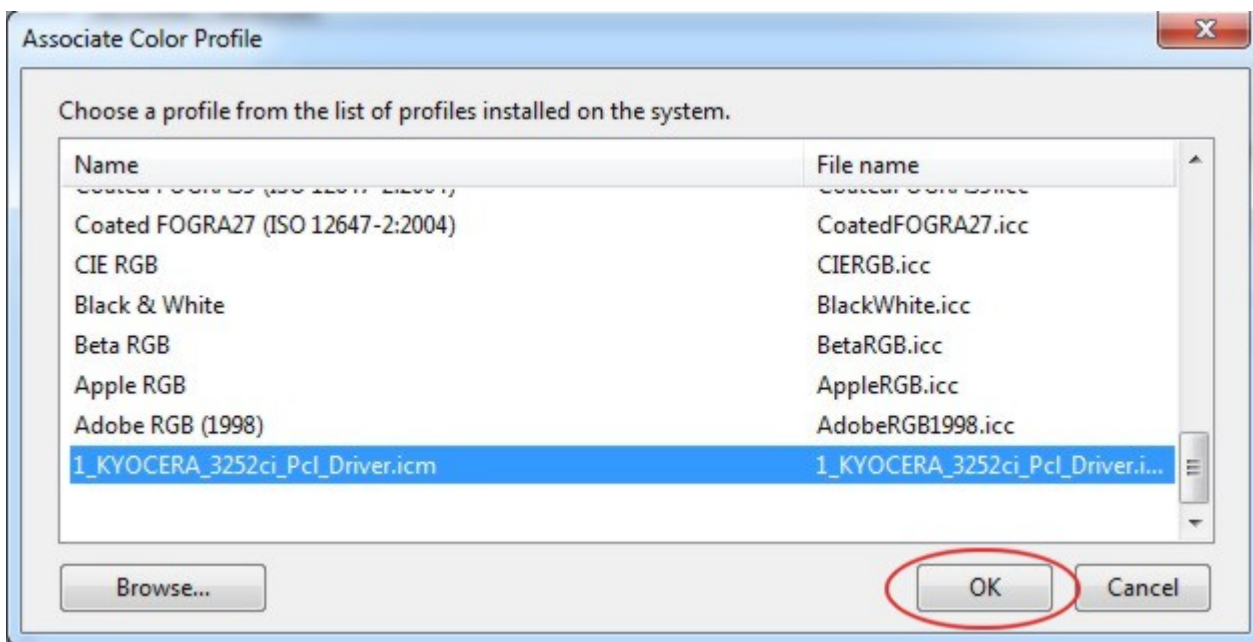
In MyQ multifunction device's properties select **Color Management**



Select MyQ multifunction device and add the respective profile



Select MyQ multifunction device and press **Add**

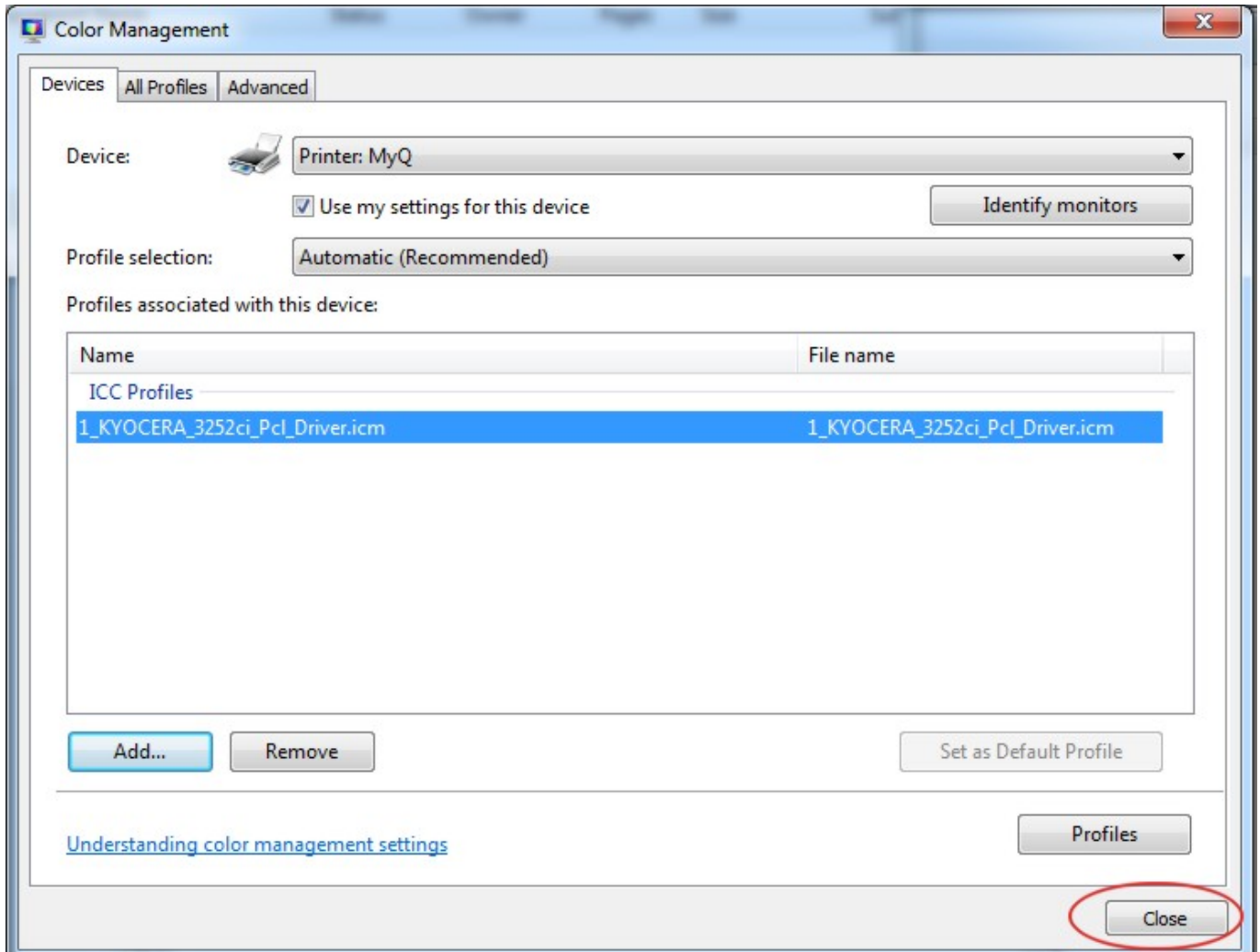


- For Kyocera TASKalfa 3252ci use **1\_KYOCERA\_3252ci\_Pcl\_Driver** (file 1\_KYOCERA\_3252ci\_Pcl\_Driver.icm from 2019-04-10)

- For Kyocera TASKalfa 8052ci use **1\_4P\_KYOCERA\_3252ci\_Pcl\_v2** (file 1\_KYOCERA\_8052ci\_Pcl\_v2.icm from 2018-03-06)

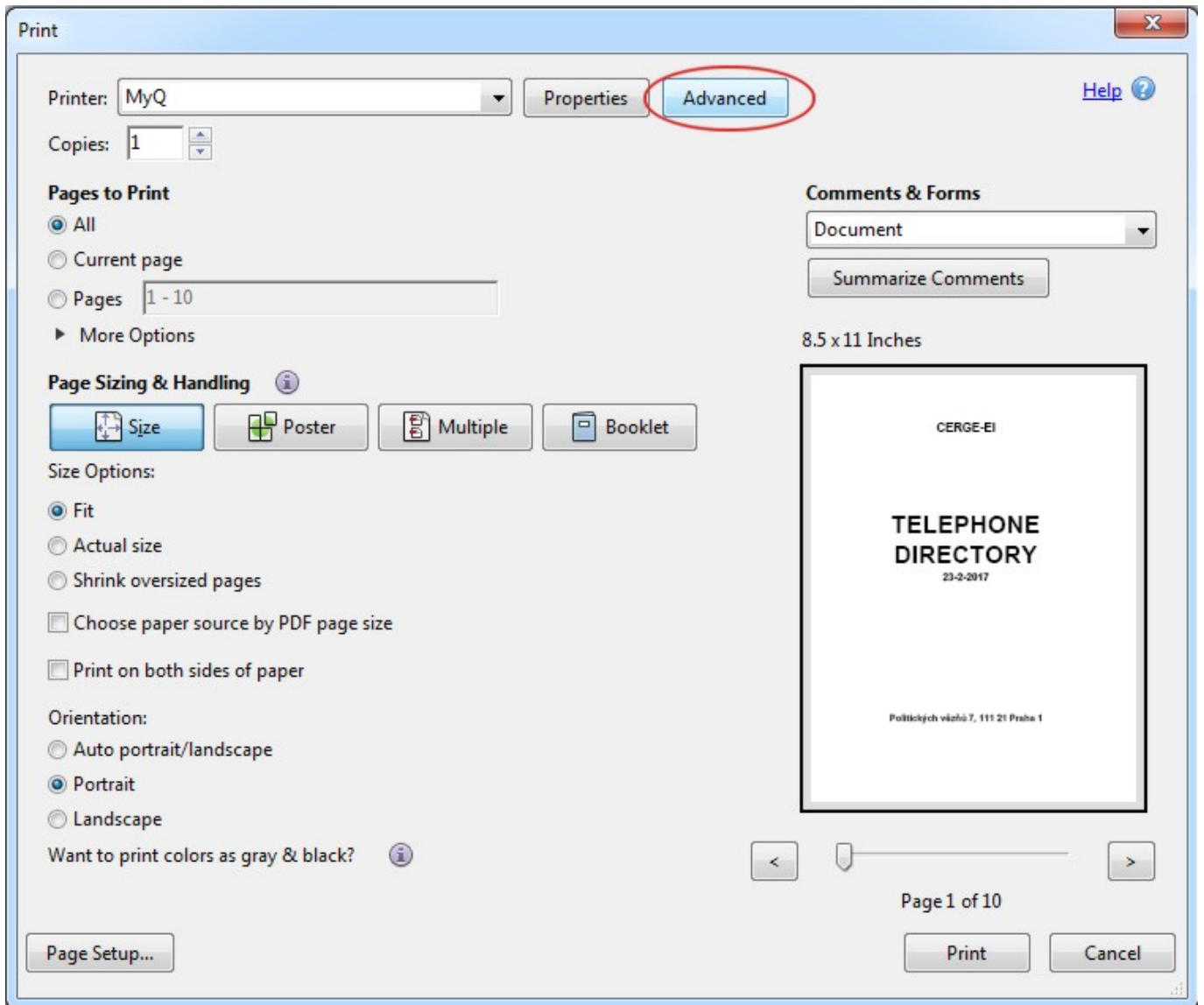
1_4P_KYOCERA_3252ci_Pcl_v2	1_4P_KYOCERA_8052ci_Pcl_v2.icm	Printer
----------------------------	--------------------------------	---------

Add the **1\_KYOCERA\_3252ci\_Pcl\_Driver** profile and press **Close**



### 3. Set up the color profile in Adobe Acrobat printing properties

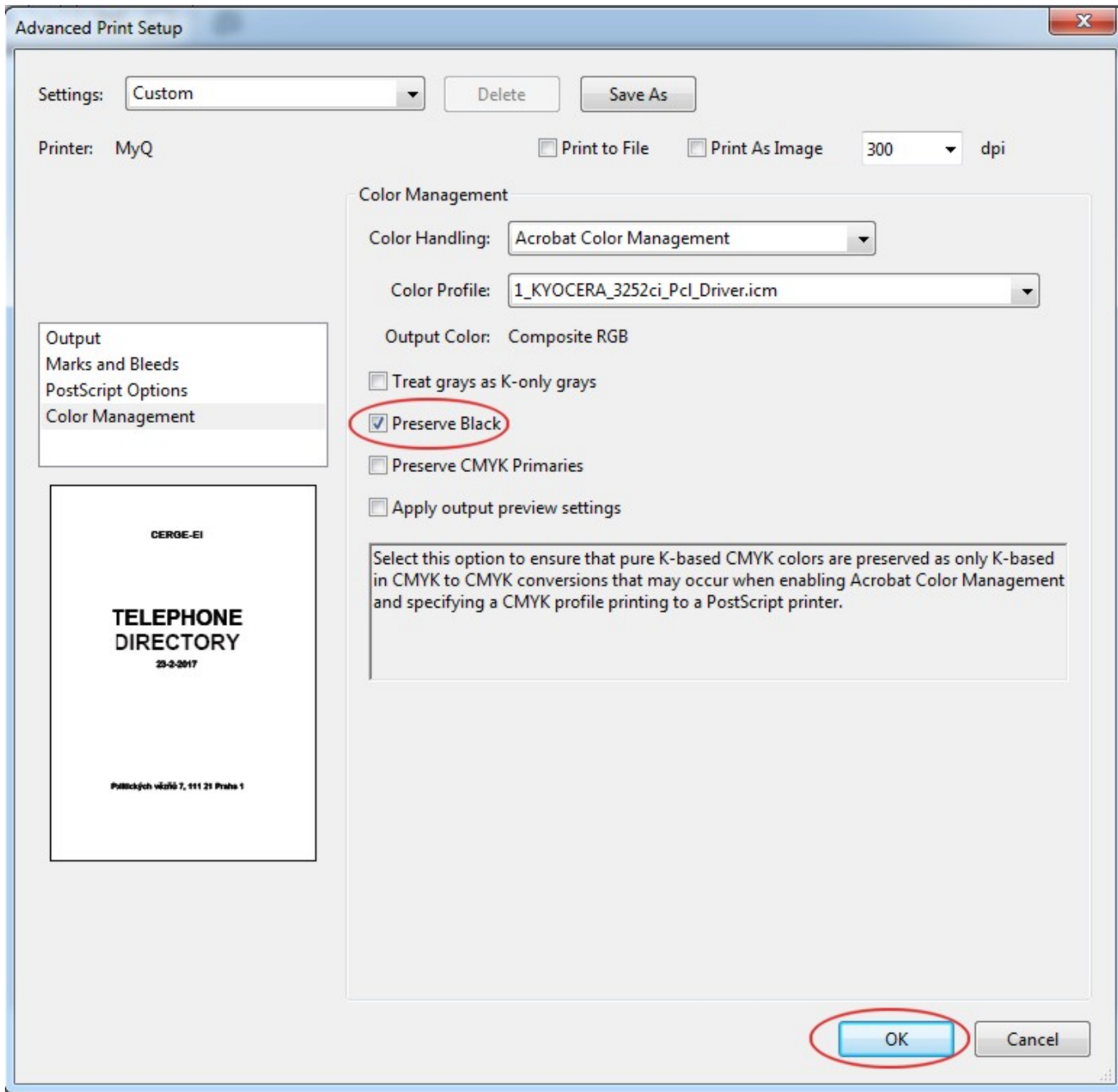
Open the desired document in Adobe Acrobat, select **Print** and **MyQ** multifunction device. Press **Advanced** printing properties.



Select **1\_KYOCERA\_3252ci\_Pcl\_Driver** color profile



Eventually check **Preserve Black** box and press **OK**



### PRINT THE DOCUMENT

From:  
<https://itinfo.cerge-ei.cz/> - **CERGE-EI Infrastructure Services**

Permanent link:  
[https://itinfo.cerge-ei.cz/doku.php?id=public:print:myq\\_color\\_profile&rev=1574346913](https://itinfo.cerge-ei.cz/doku.php?id=public:print:myq_color_profile&rev=1574346913)

Last update: **2019-11-21 14:35**

