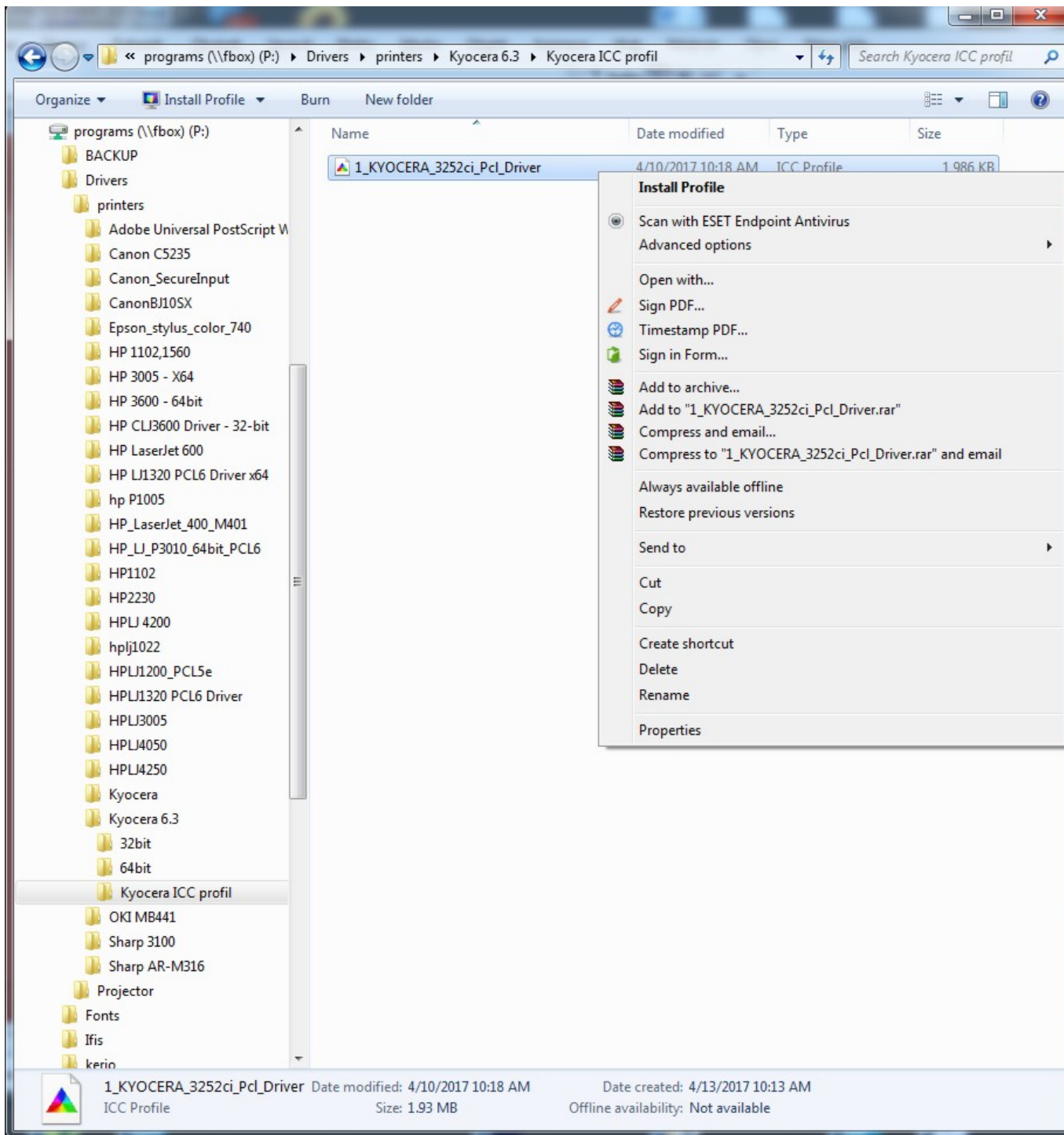


How to Use a Color Profile on MyQ Multifunction Devices

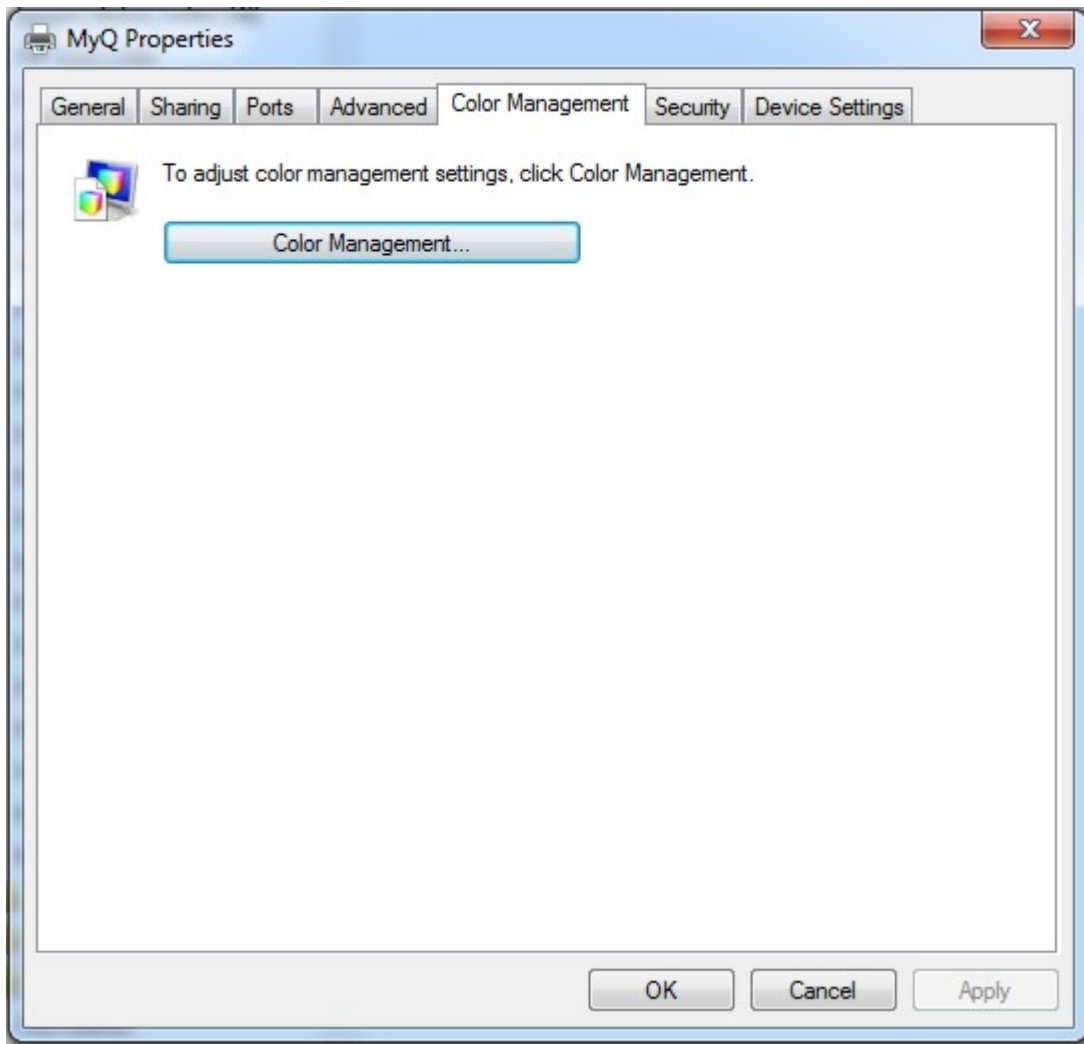
1. Install the profile driver in Windows

Find the respective profile **1_KYOCERA_3252ci_Pcl_Driver** on \\fbox\programs\drivers\printers\kyocera 6.3\Kyocera ICC profil and install it in your Windows operating system.



2. Set up the color profile in the MyQ multifunction device's properties

In MyQ multifunction device's properties select **Color Management**



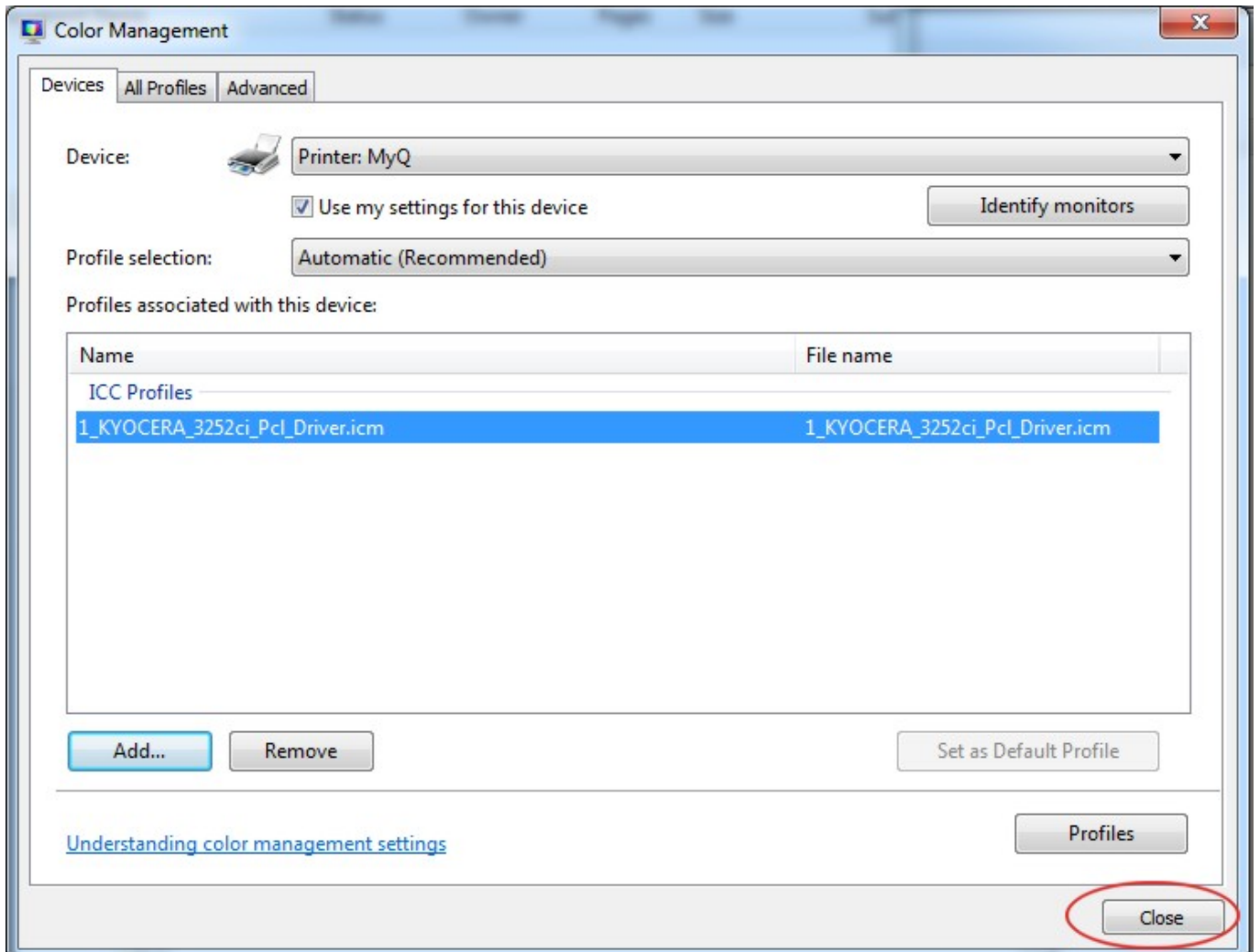
Select MyQ multifunction device and add the respective profile



Select MyQ multifunction device and press **Add**

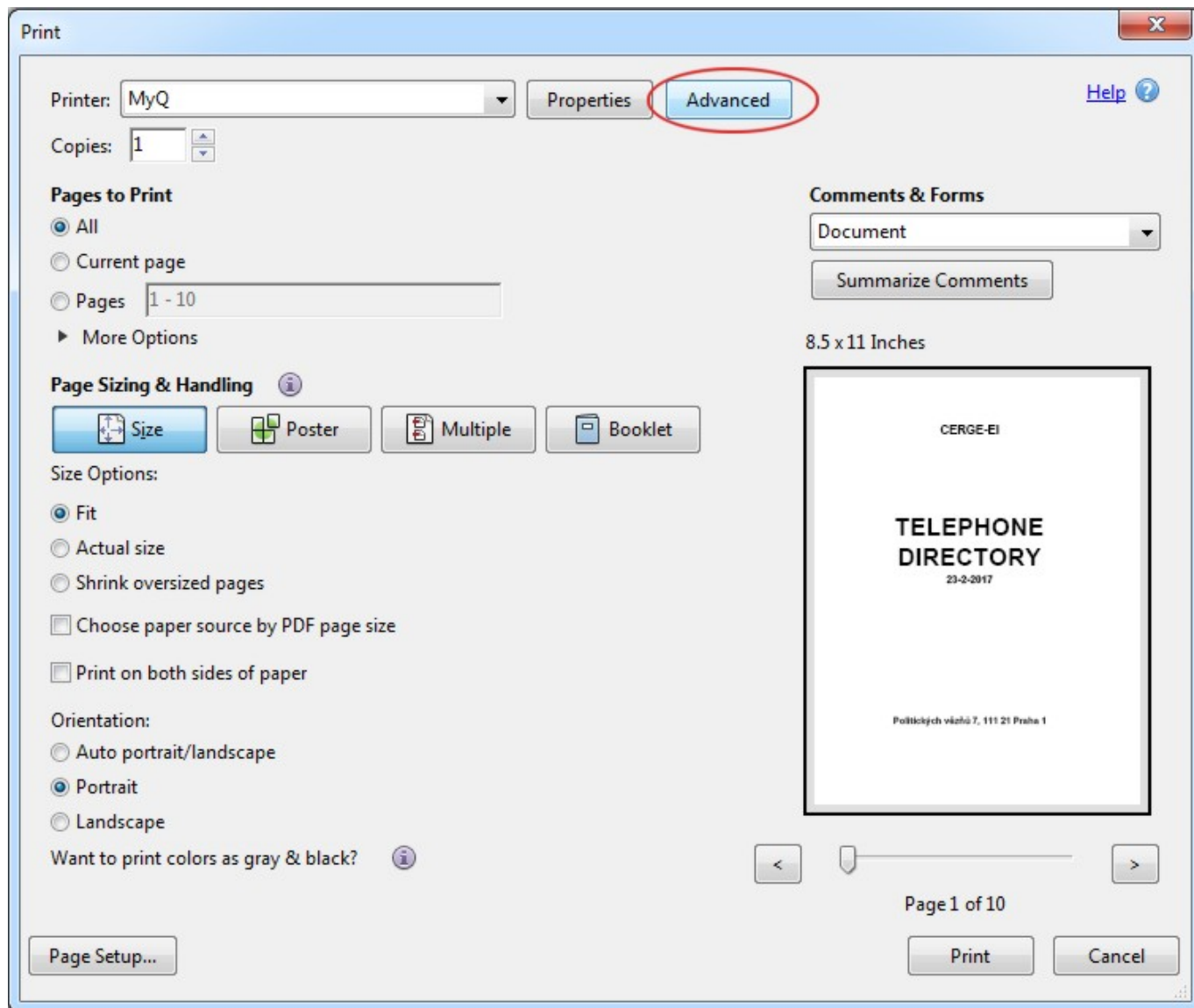


Add the **1_KYOCERA_3252ci_Pcl_Driver** profile and press **Close**



3. Set up the color profile in Adobe Acrobat printing properties

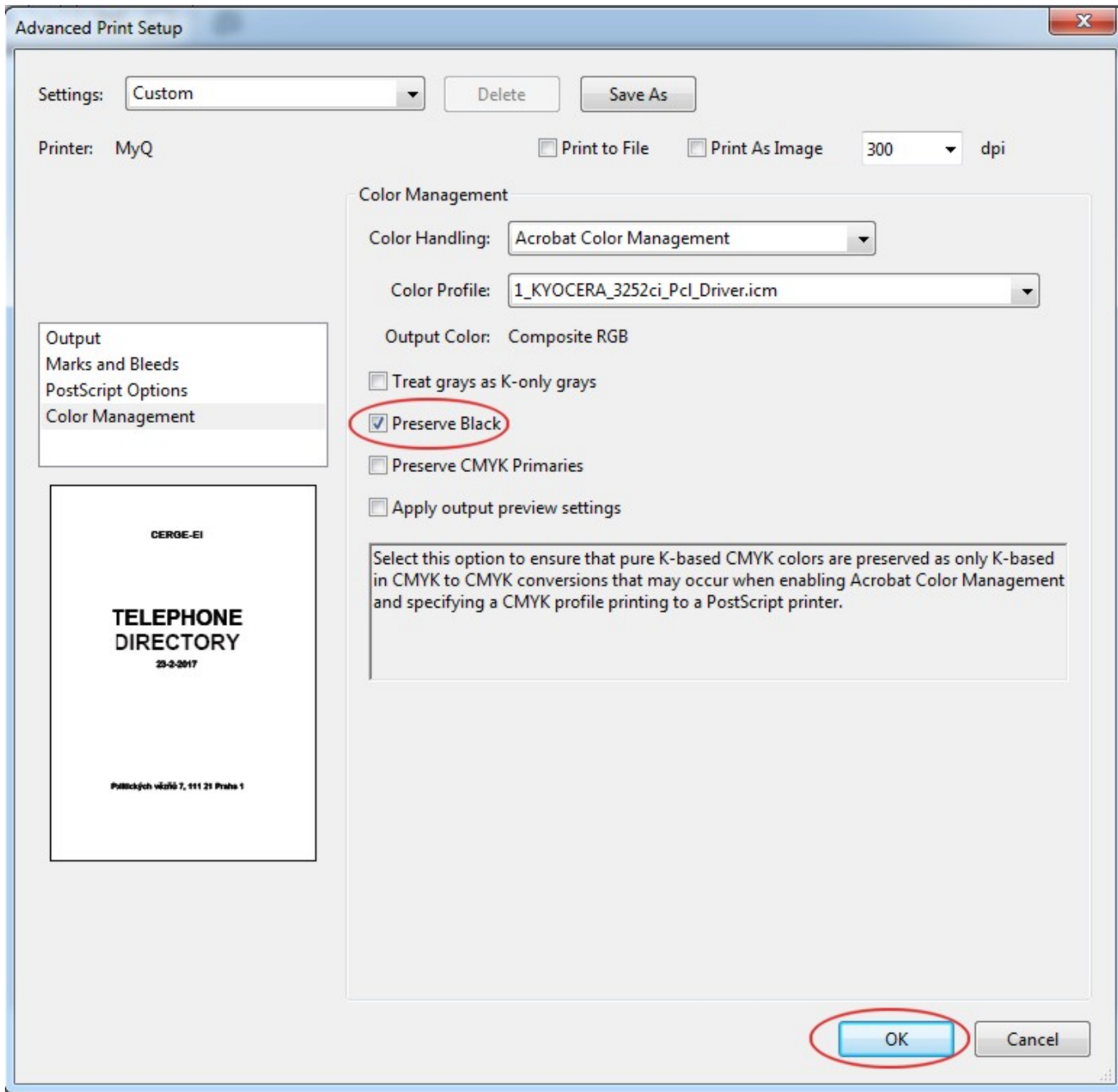
Open the desired document in Adobe Acrobat, select **Print** and **MyQ** multifunction device. Press **Advanced** printing properties.



Select **1_KYOCERA_3252ci_Pcl_Driver** color profile



Eventually check **Preserve Black** box and press **OK**



PRINT THE DOCUMENT

From:
<https://itinfo.cerge-ei.cz/> - **CERGE-EI Infrastructure Services**

Permanent link:
https://itinfo.cerge-ei.cz/doku.php?id=public:print:myq_color_profile&rev=1574346582

Last update: **2019-11-21 14:29**

