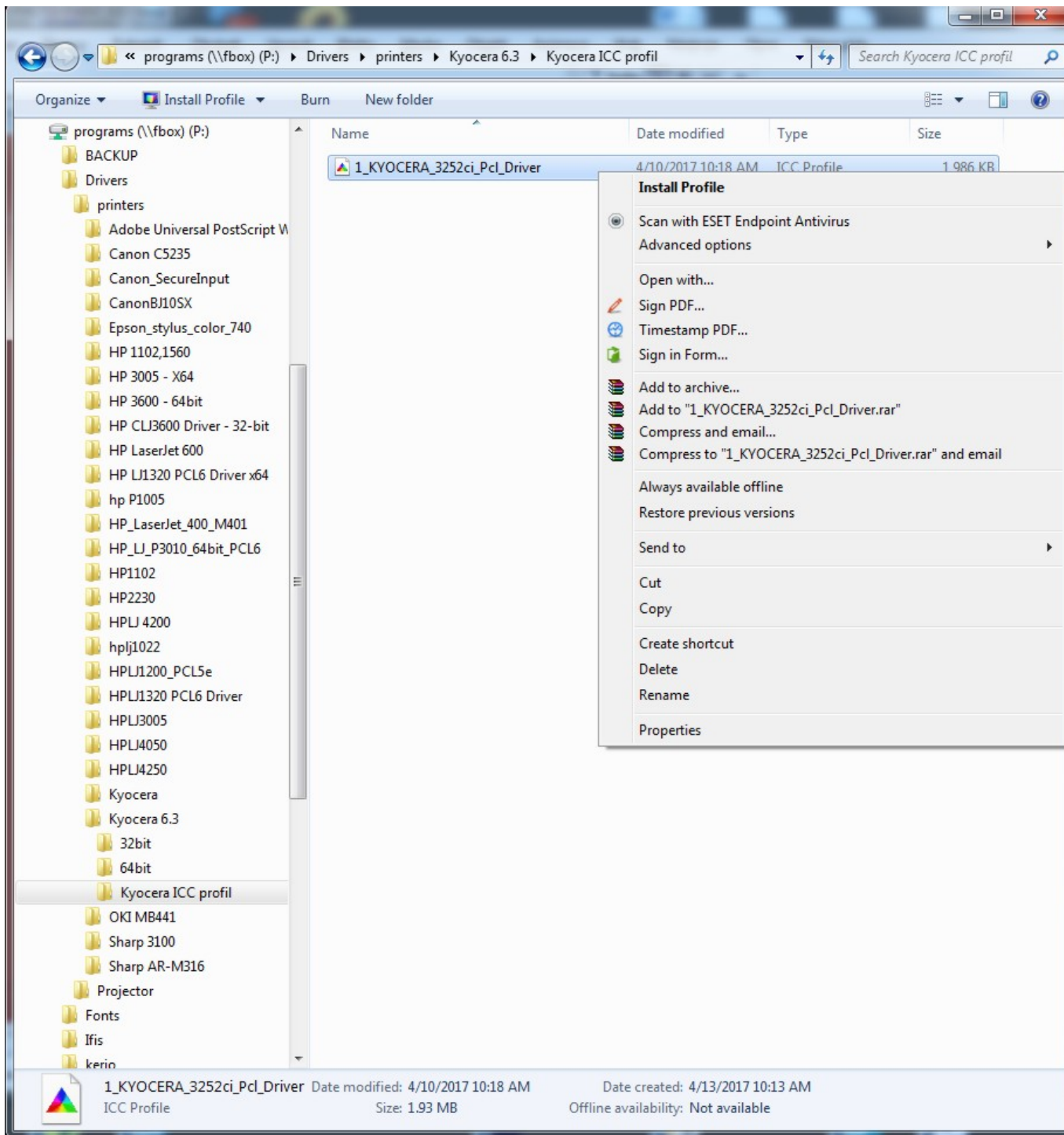
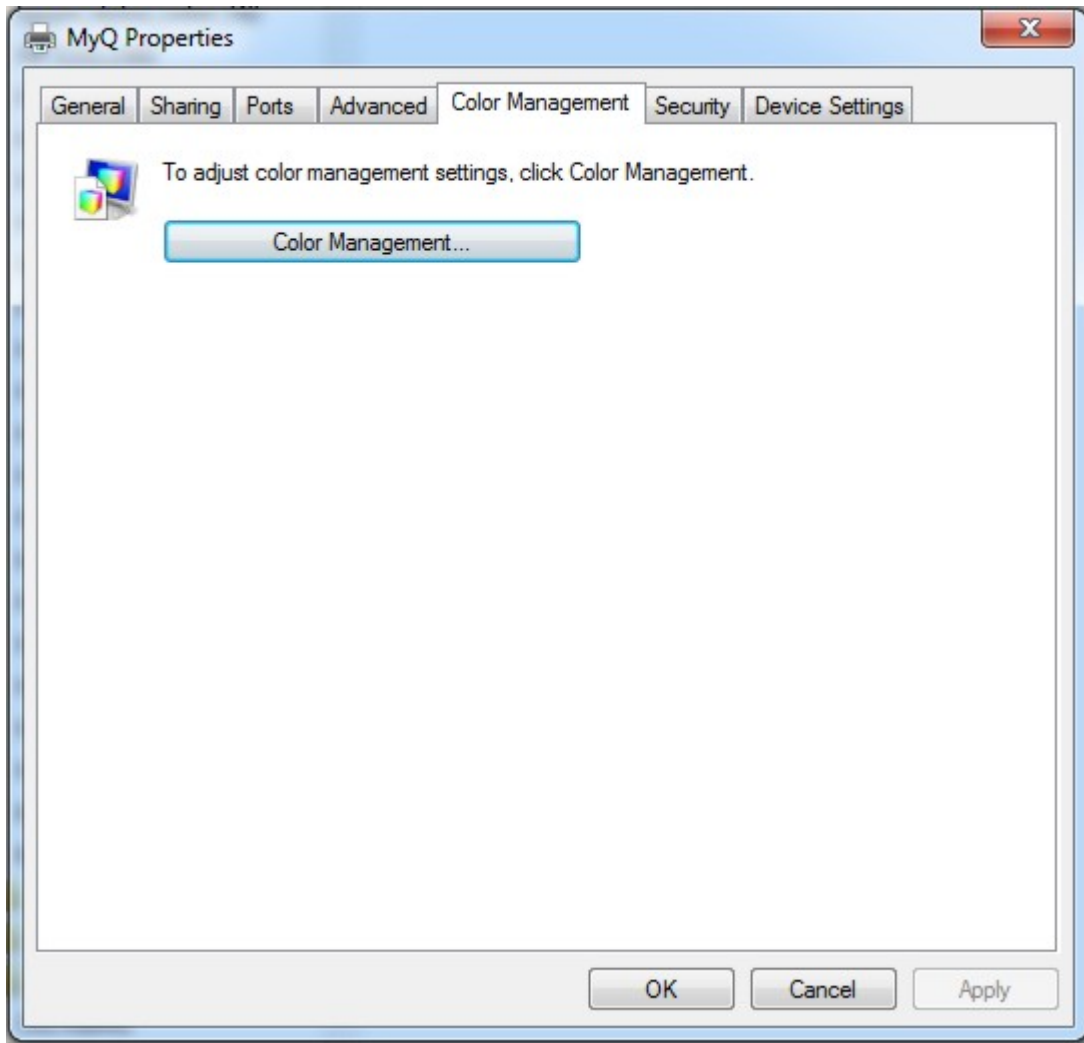


How to Use a Color Profile on MyQ Multifunction Devices

Find the respective profile **1_KYOCERA_3252ci_Pcl_Driver** on \\fbox\programs\drivers\printers\kyocera 6.3\Kyocera ICC profil and install it in your Windows operating system.



In MyQ multifunction device's properties select **Color Management**



From:
<https://itinfo.cerge-ei.cz/> - **CERGE-EI Infrastructure Services**

Permanent link:
https://itinfo.cerge-ei.cz/doku.php?id=public:print:myq_color_profile&rev=1495459846

Last update: **2017-05-22 13:30**

