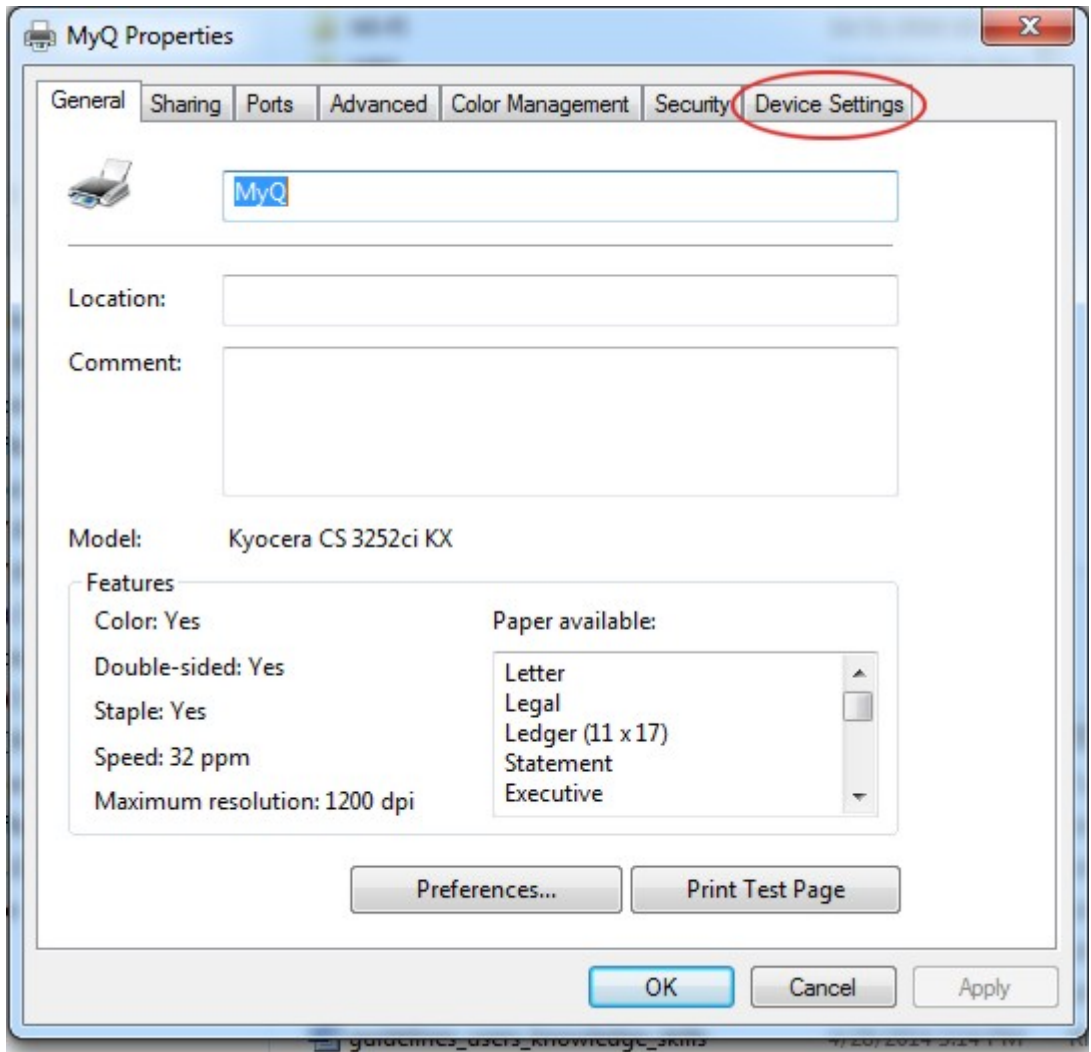


Profile Configuration on Kyocera CS 3252ci KX Multifunction Device

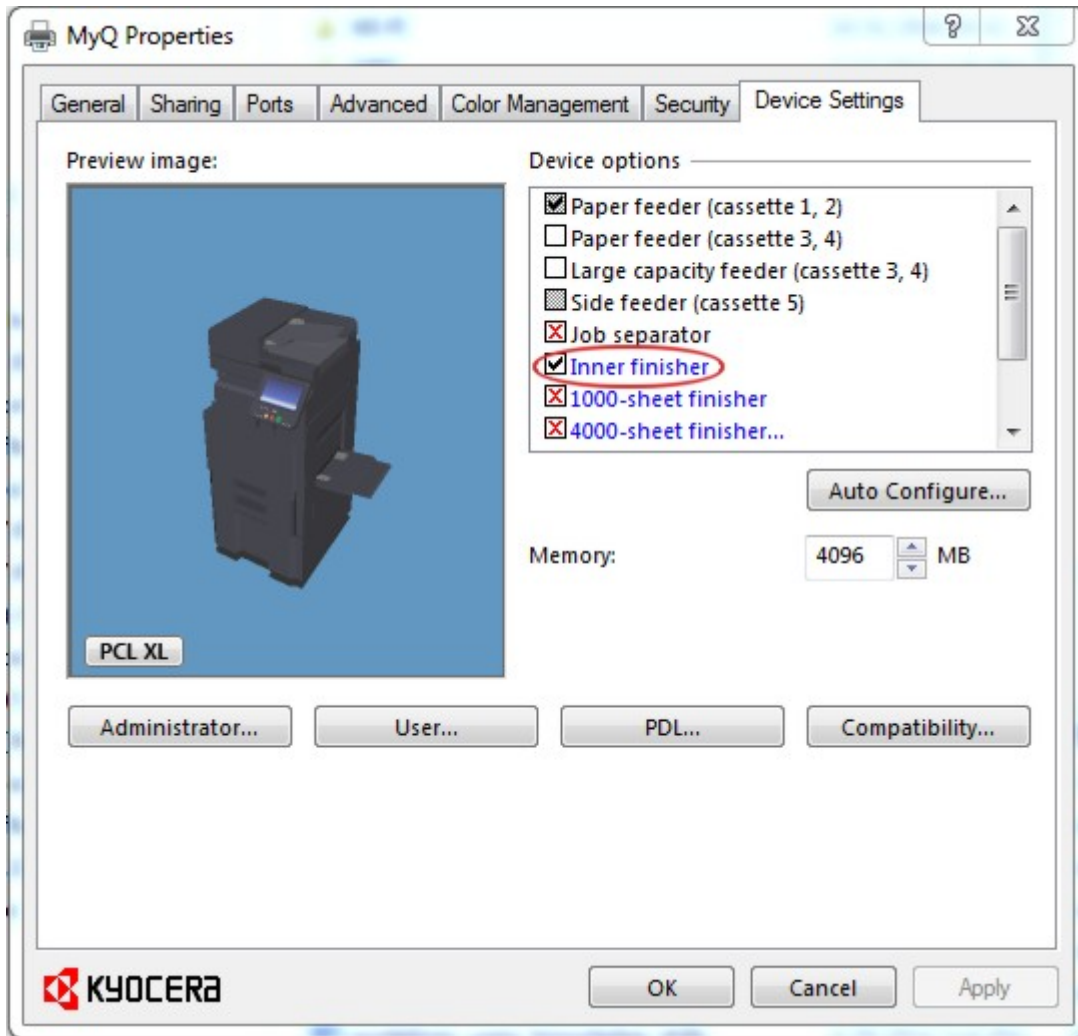
- Providing you have Kyocera CS 3252ci KX multifunction device properly installed and fully functional, select (double click) this device in **Devices and Printers** pop-up menu option.
- Select **Printer** and then **Properties** in pop-up menu



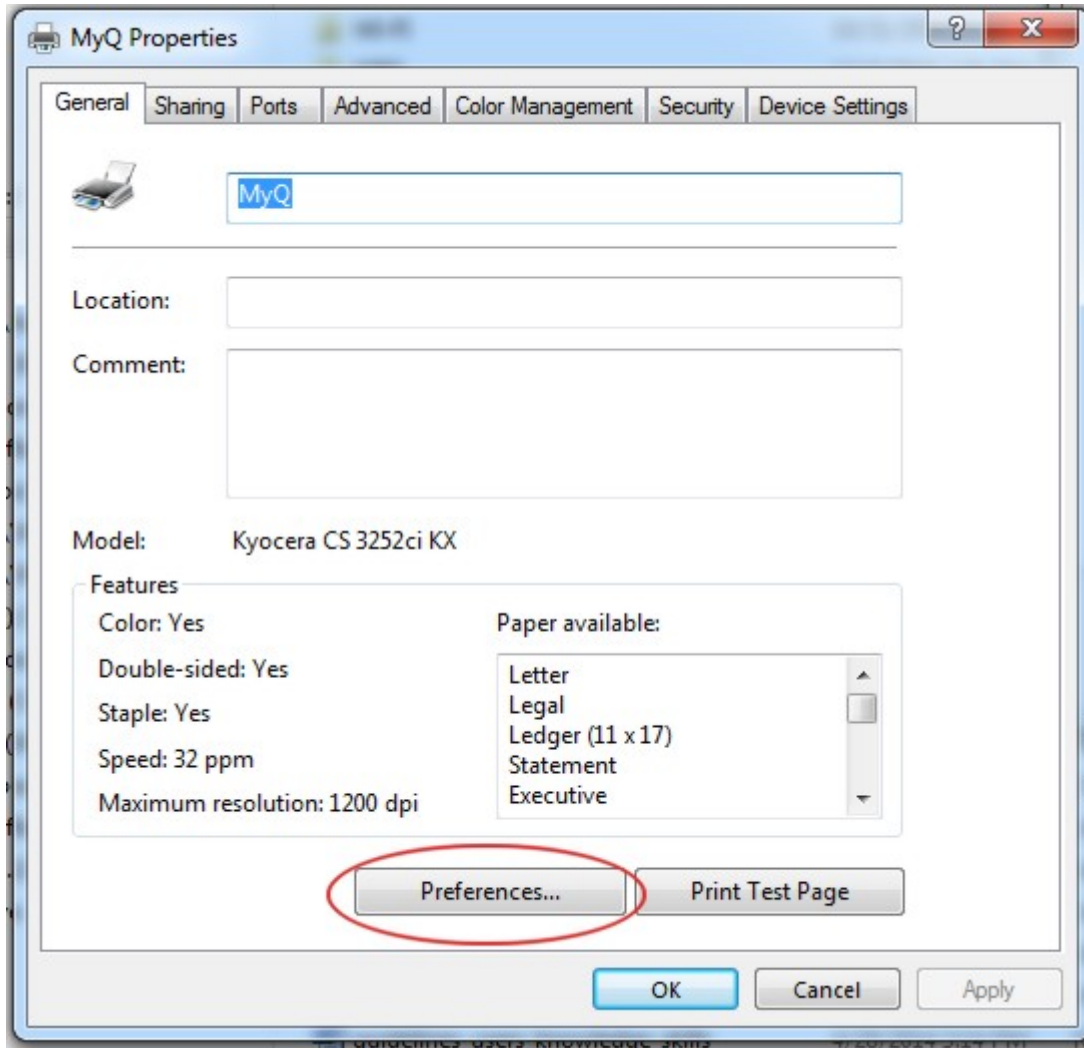
- Select **Device Settings** if you want to use e.g. the inner finisher



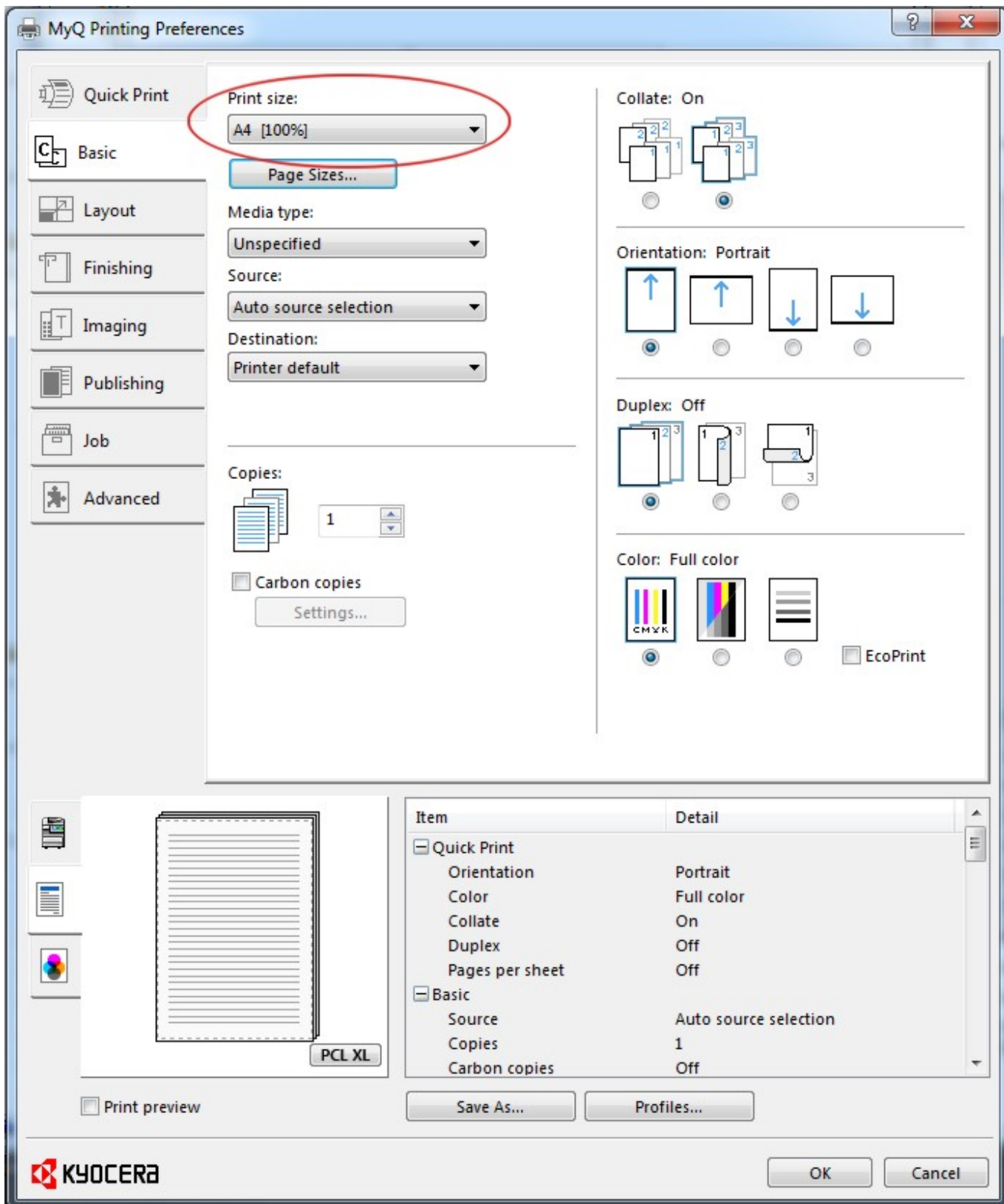
- Select **Inner finisher** and click OK



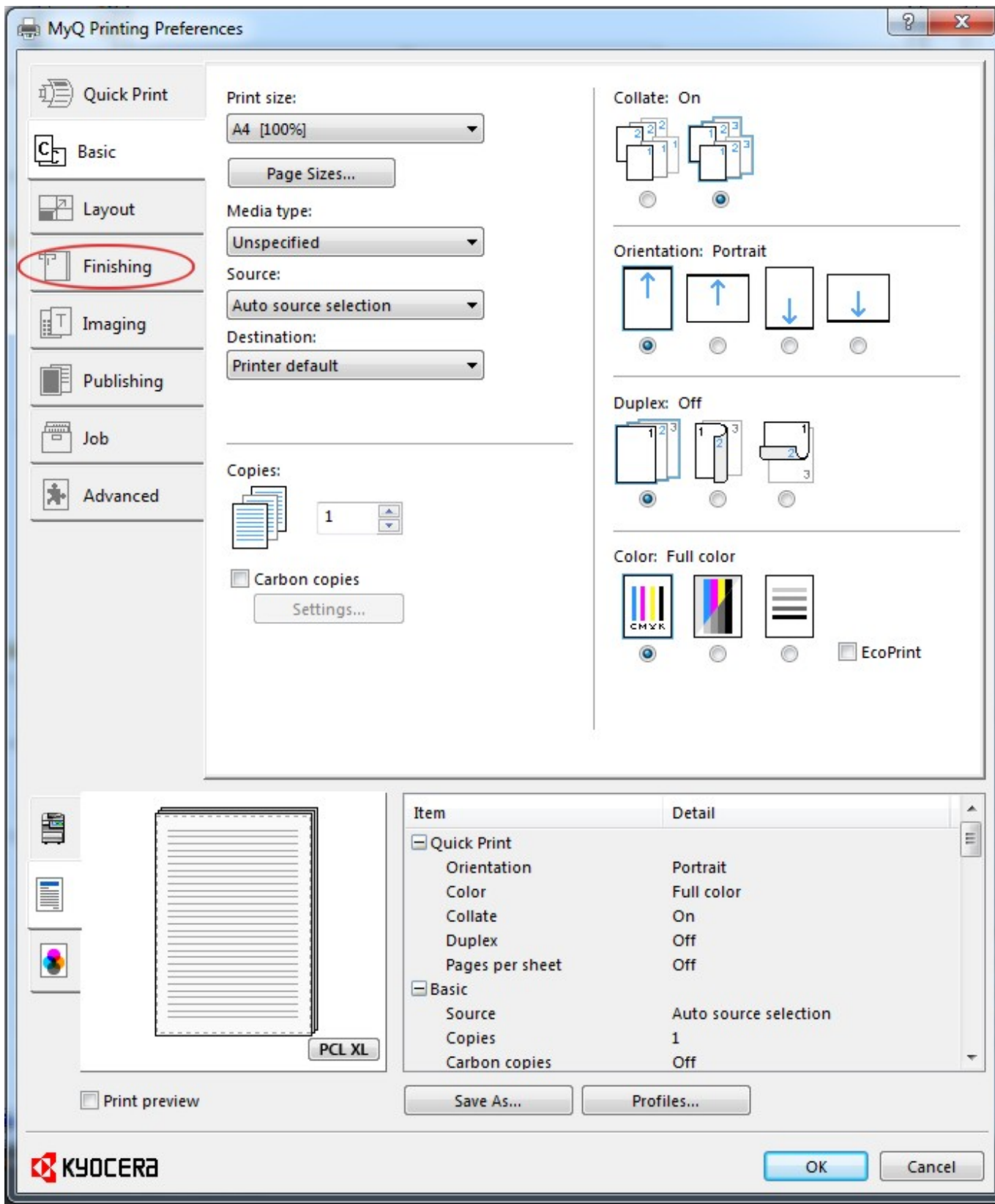
- Go to **General** option and click on **Preferences...** to configure printing preferences



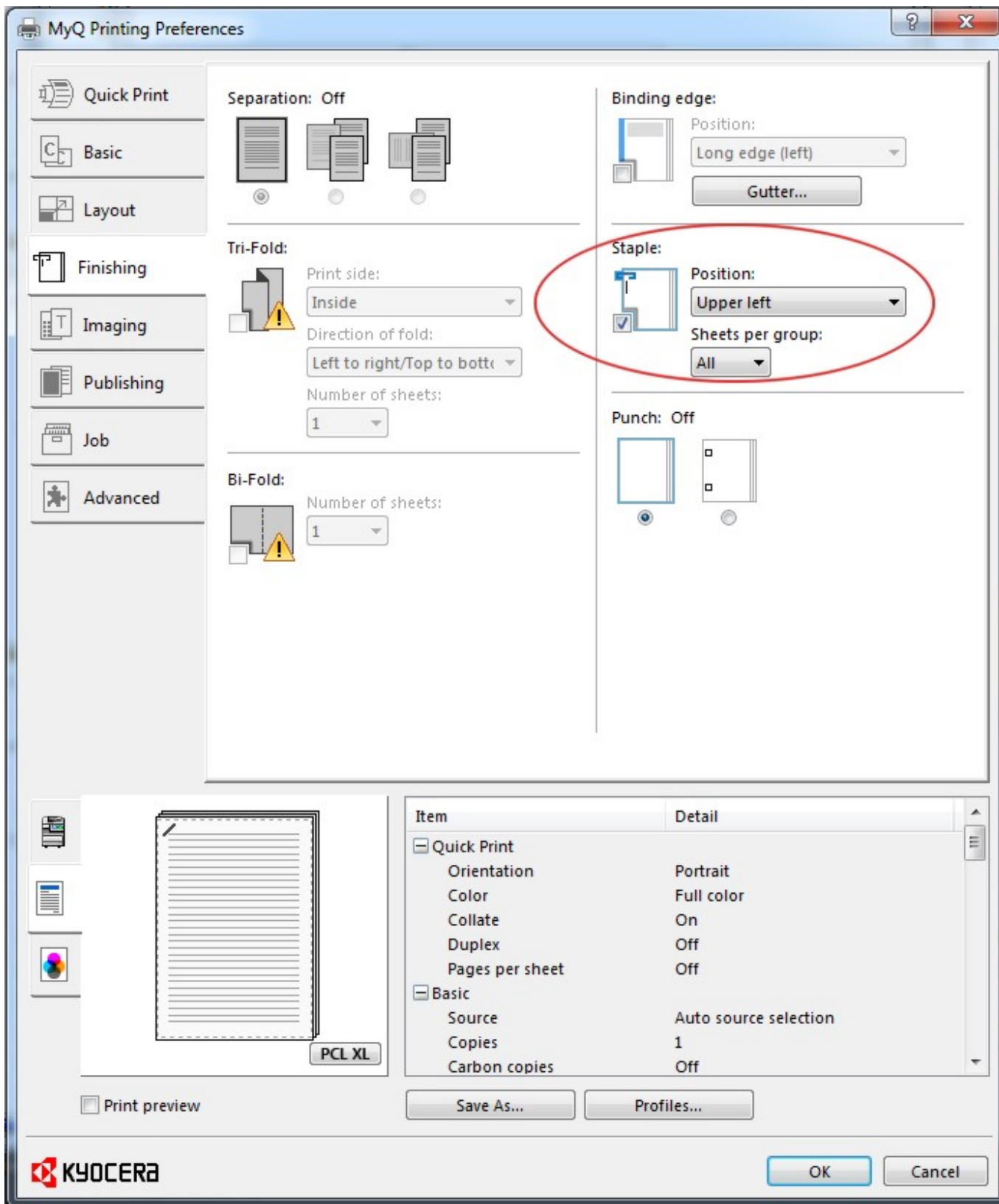
- In **Basic** option select **Print size (A4 [100%])**, **orientation**, **duplex** etc.



- Select **Finishing** to configure e.g. **Staple**



- Configure **Staple** options and if you finished your configuration, select **Save As...** to save it as a **Profile**



- Select a proper name for your profile and a proper icon click on **OK** to save it



If you want to use the profile, select it in **Printing Preferences** of the printer.

From: <https://itinfo.cerge-ei.cz/> - **CERGE-EI Infrastructure Services**

Permanent link: https://itinfo.cerge-ei.cz/doku.php?id=public:print:kyocera_profile&rev=1489997232

Last update: **2017-03-20 08:07**

