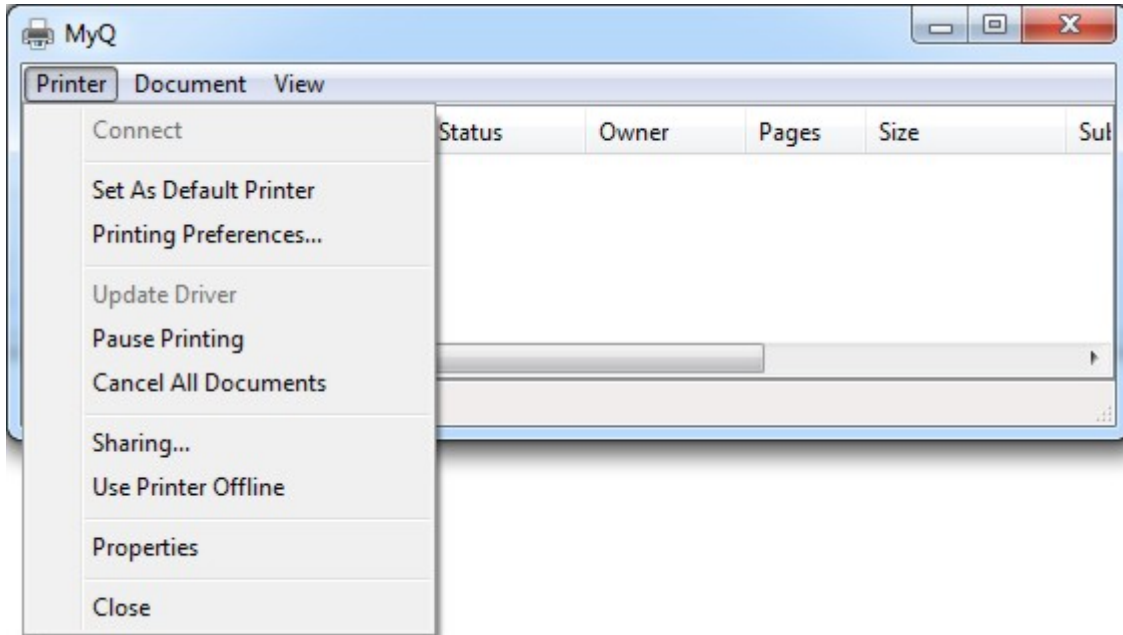
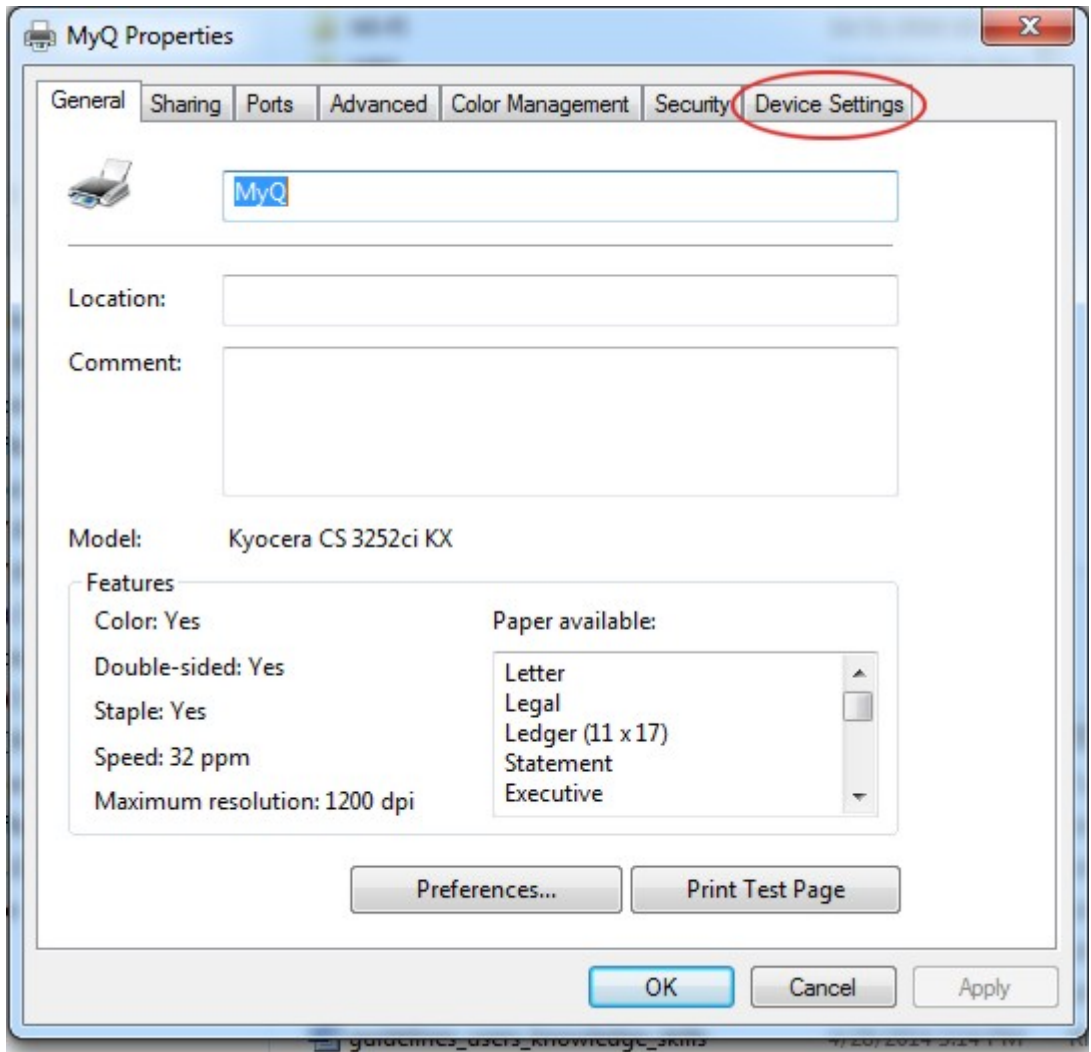


Profile Configuration on Kyocera CS 3252ci KX Multifunction Device

- Providing you have Kyocera CS 3252ci KX multifunction device properly installed and fully functional select (double click) this device in **Devices and Printers** pop-up menu option.
- Select **Printer** and then **Properties** in pop-up menu



- Select **Device Settings** if you want to use e.g. the inner finisher



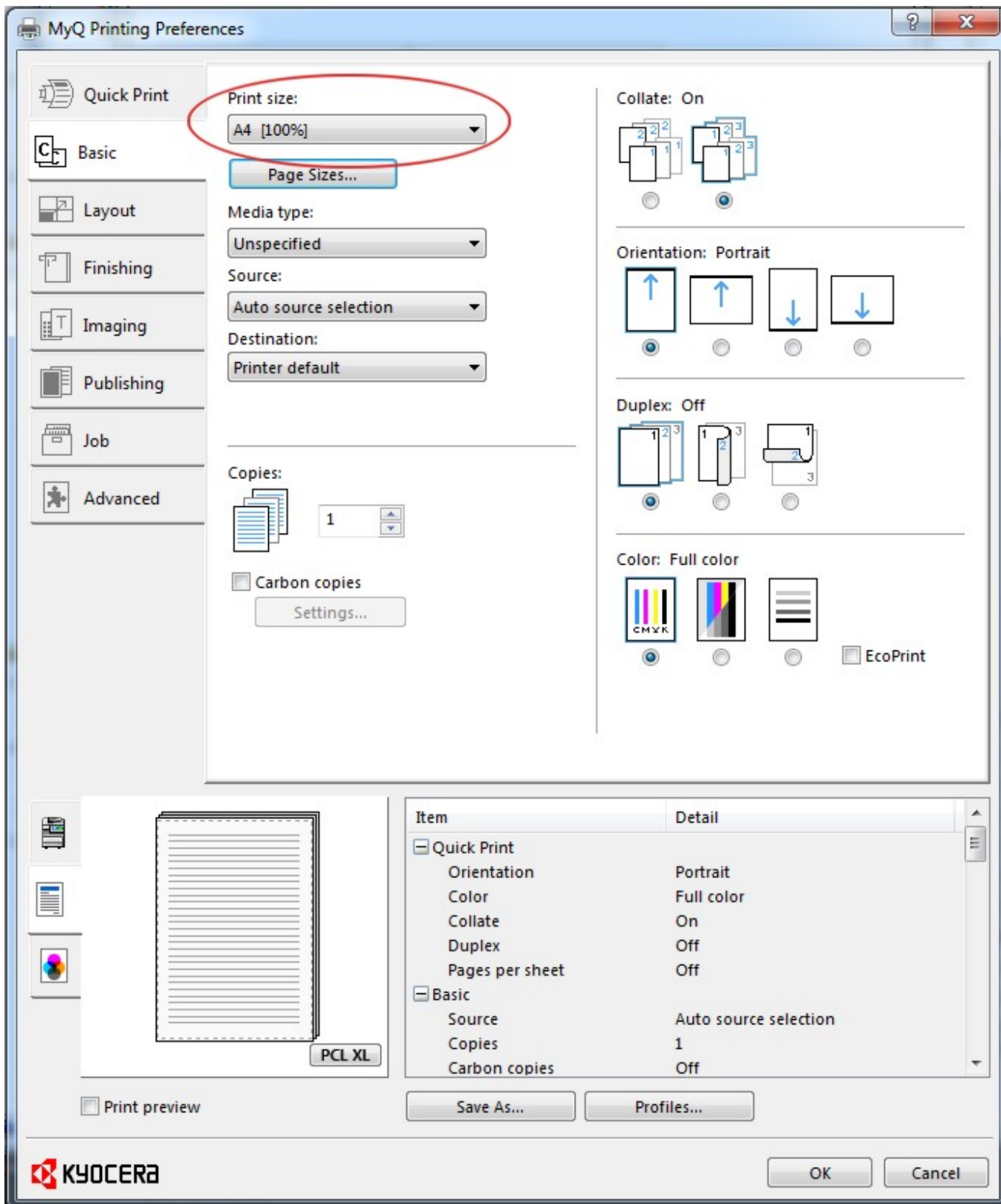
- Select **Inner finisher** and click OK



- Go to **General** option and click on **Propertie** to configure printing preferences



- In **Basic** option select **Print size** (A4 [100%]), orientation, duplex etc.



- Select **Finishing** to configure e.g. **Staple**

MyQ Printing Preferences

Quick Print

Basic

Layout

Finishing

Imaging

Publishing

Job

Advanced

Separation: Off

Tri-Fold:

Print side: Inside

Direction of fold: Left to right/Top to bottom

Number of sheets: 1

Bi-Fold:

Number of sheets: 1

Binding edge:

Position: Long edge (left)

Gutter...

Staple:

Position: Upper left

Sheets per group: All

Punch: Off

Print preview

PCL XL

Item	Detail
Quick Print	
Orientation	Portrait
Color	Full color
Collate	On
Duplex	Off
Pages per sheet	Off
Basic	
Source	Auto source selection
Copies	1
Carbon copies	Off

Save As... Profiles...

OK Cancel

From: <https://itinfo.cerge-ei.cz/> - CERGE-EI Infrastructure Services

Permanent link: https://itinfo.cerge-ei.cz/doku.php?id=public:print:kyocera_profile&rev=1489589180

Last update: 2017-03-15 14:46



