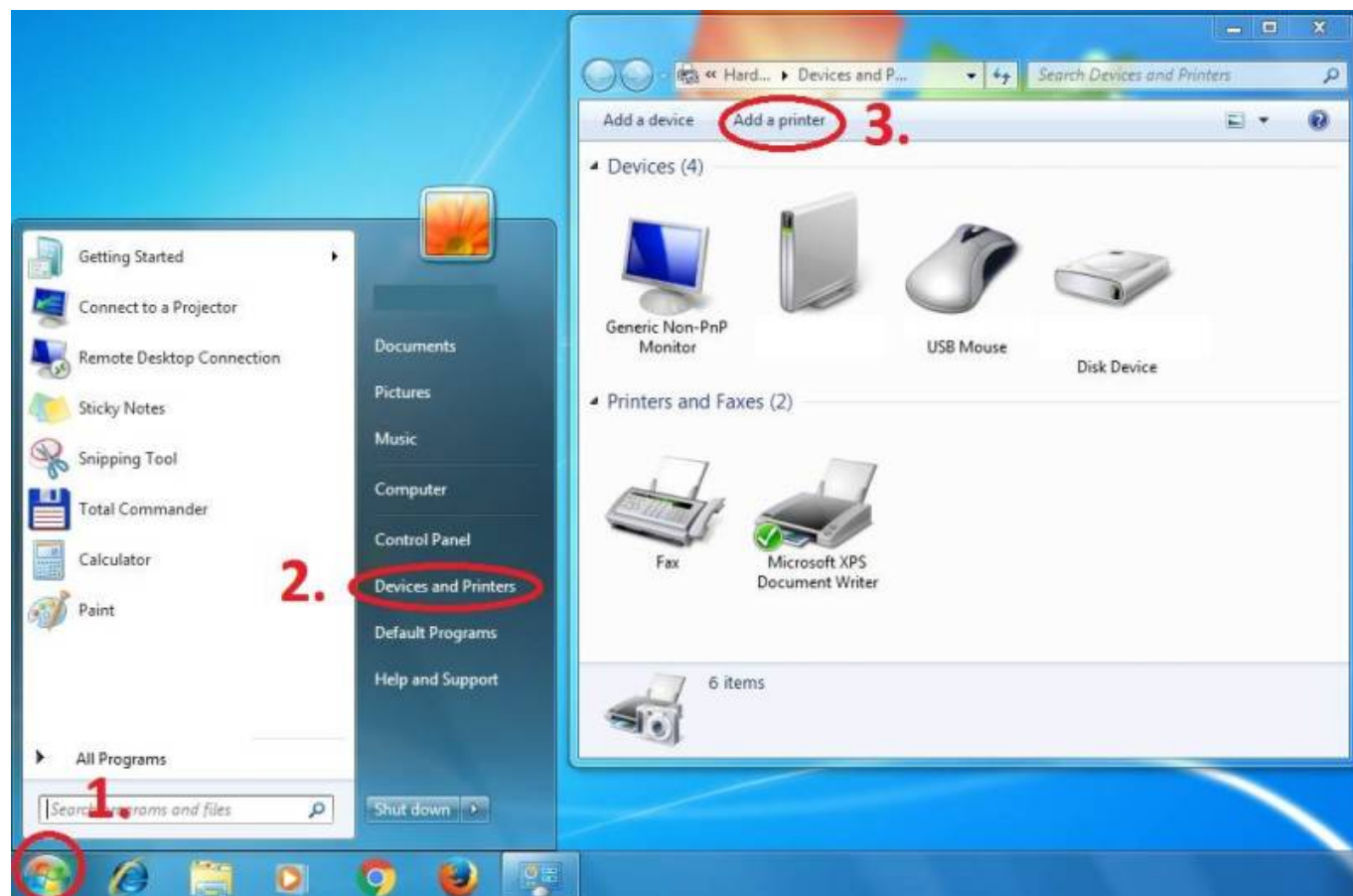
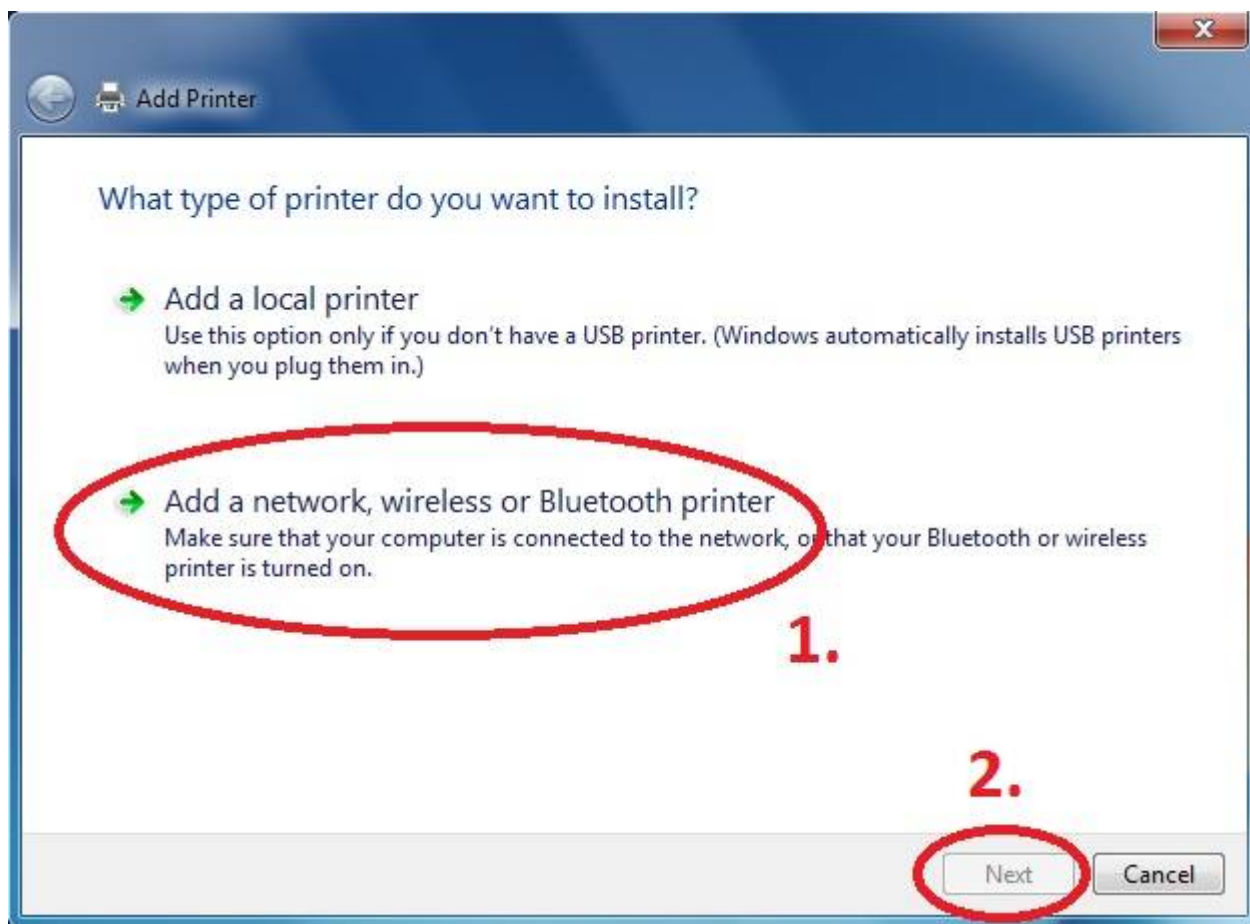


# Instructions for adding a Kyocera printer to user stations

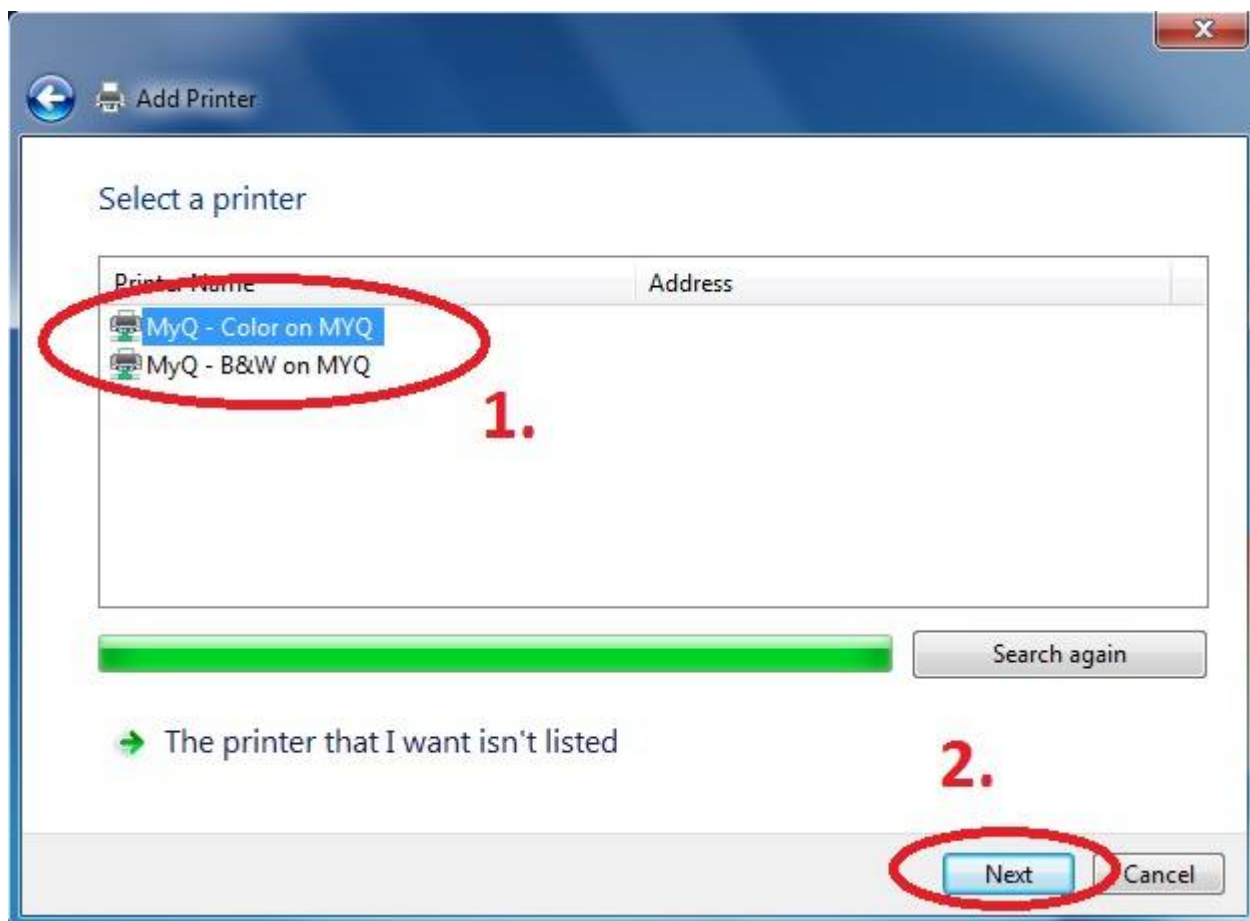
Press Start button → Devices and Printers → Add a Printer



Add a network printer



**Choose *MyQ - Color* and/or *MyQ - B&W* printer**



**For Advanced settings go to:**

**[https://itinfo.cerge-ei.cz/doku.php?id=public:print:kyocera\\_profile](https://itinfo.cerge-ei.cz/doku.php?id=public:print:kyocera_profile)**

From:

<https://itinfo.cerge-ei.cz/> - **CERGE-EI Infrastructure Services**

Permanent link:

**[https://itinfo.cerge-ei.cz/doku.php?id=public:print:cerge\\_desktops&rev=1515668660](https://itinfo.cerge-ei.cz/doku.php?id=public:print:cerge_desktops&rev=1515668660)**

Last update: **2018-01-11 11:04**

