

# Instructions for adding a Kyocera printer to user stations

Press Start button → Devices and Printers → Add a Printer



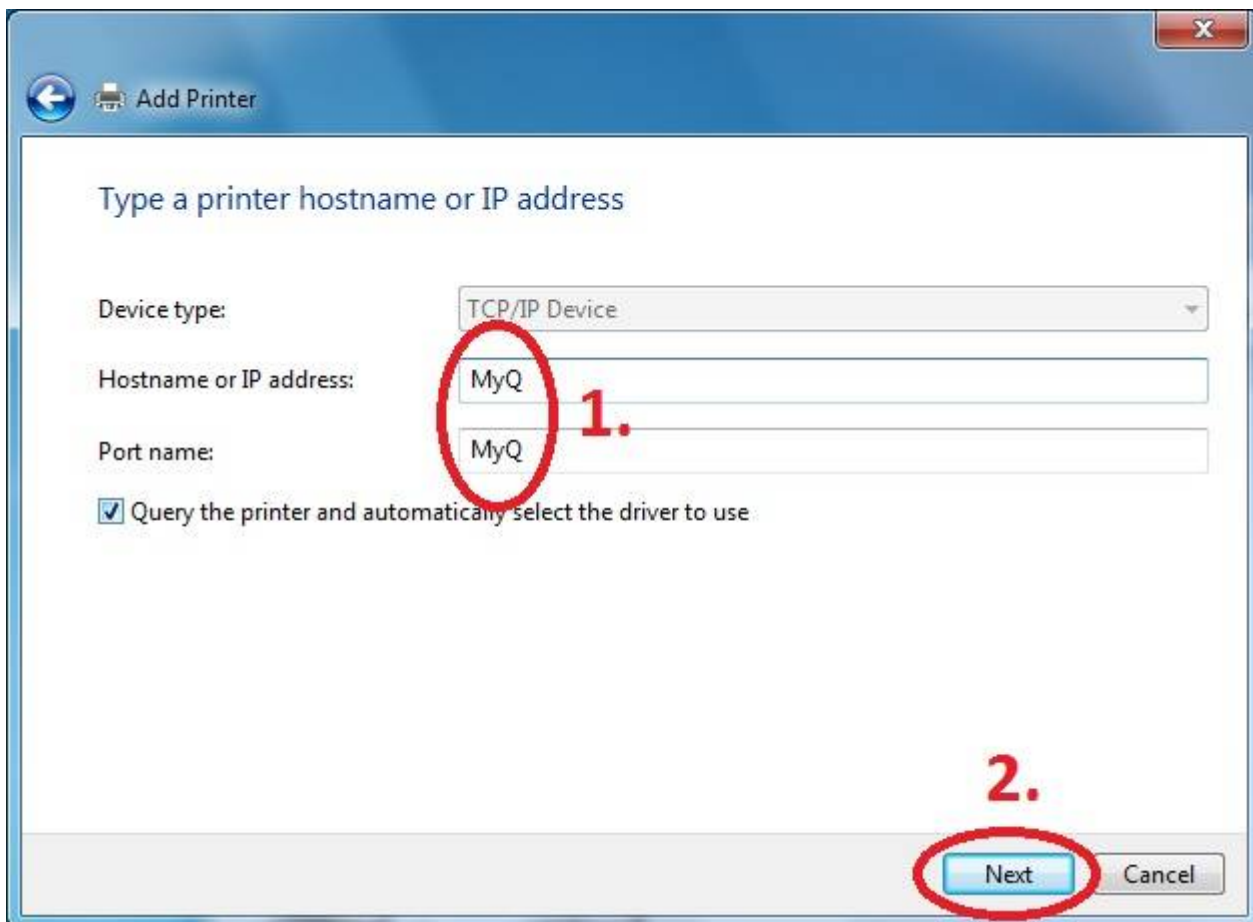
Add a local printer



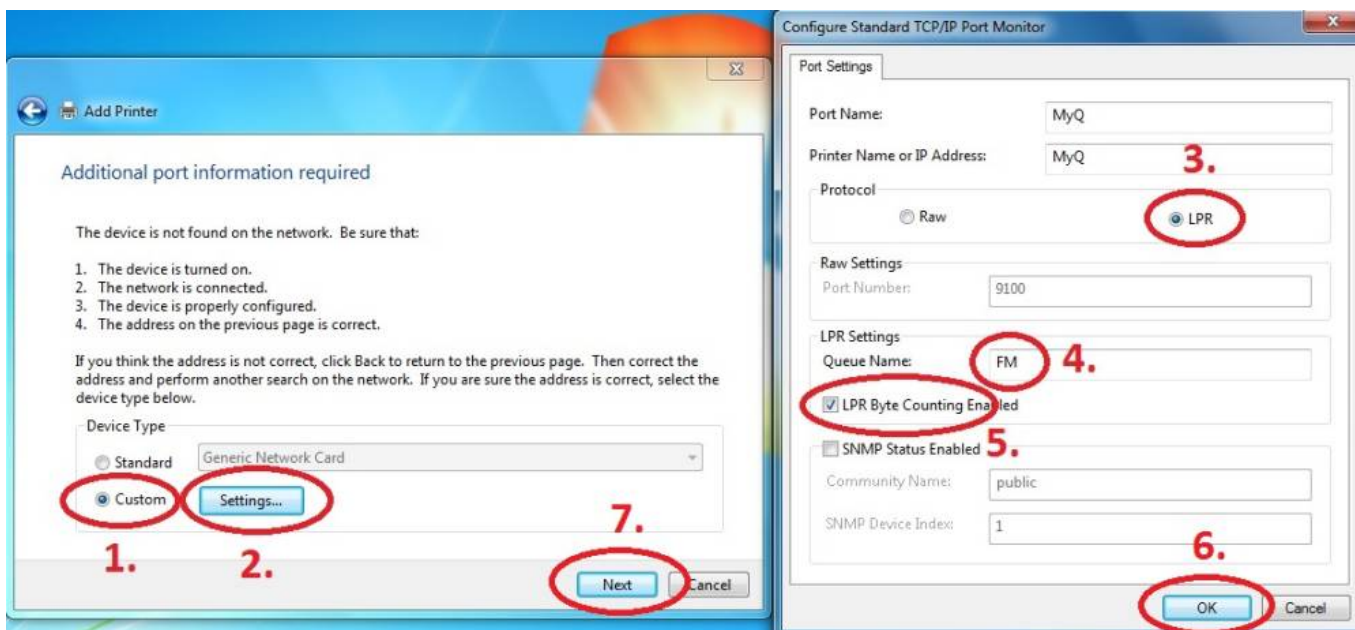
### Create a new port: Standard TCP/IP Port



### Enter Hostname - MyQ



### Customize Settings

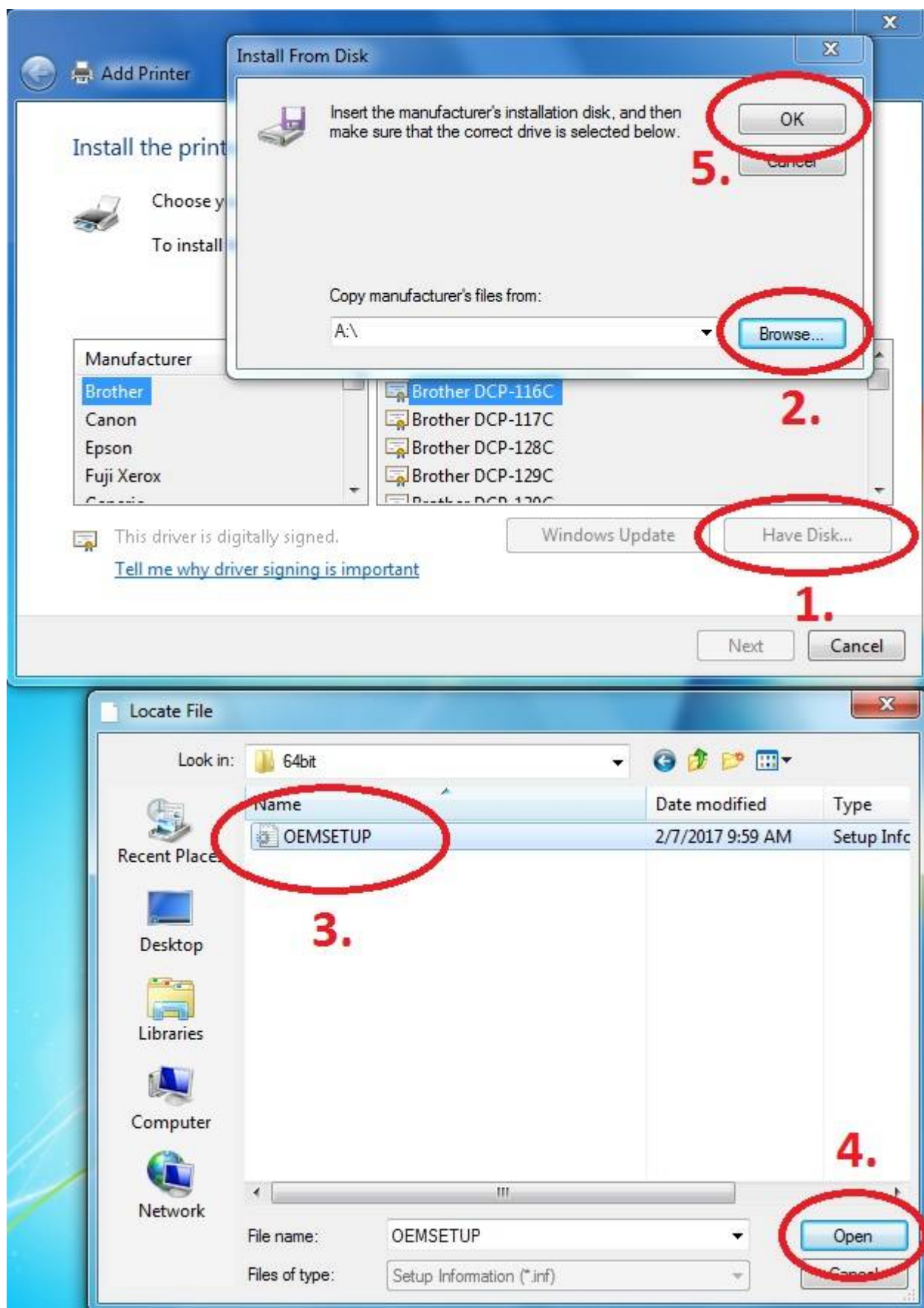


**Download driver and unzip it to the local folder (for example c:\driver\). Choose 32-bit or 64-bit version depending on your system:**

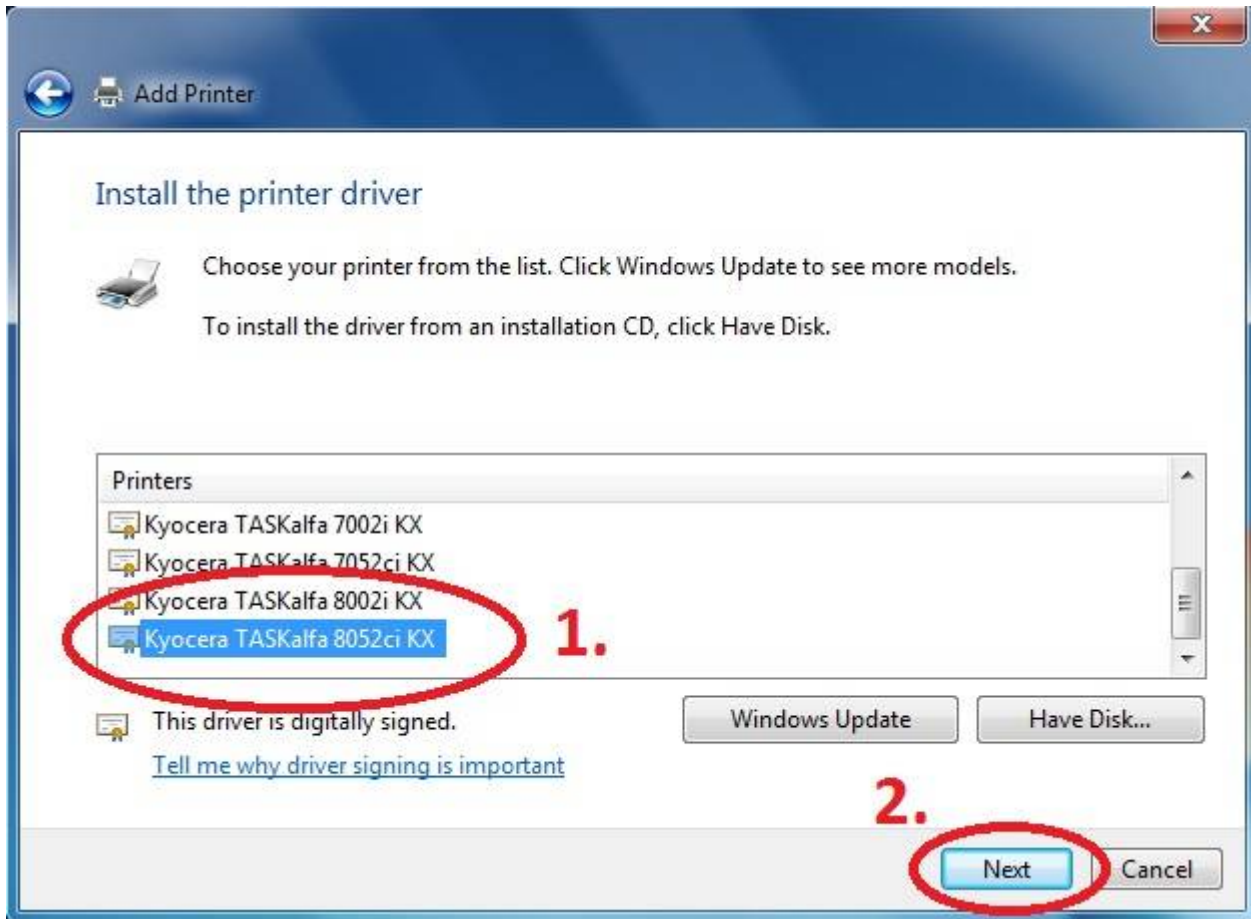
**- 32-bit driver**

**- 64-bit driver**

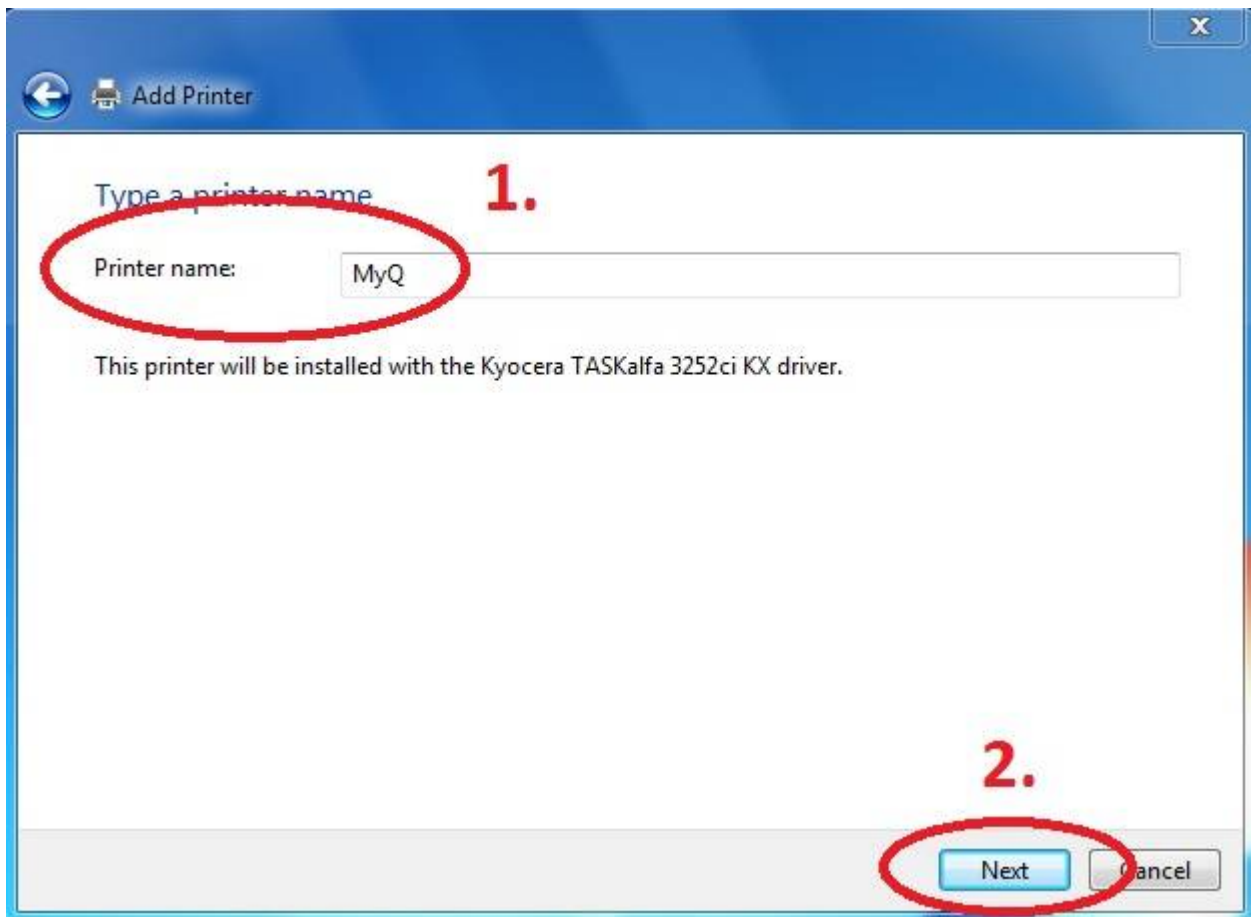
**Press Have Disk... Navigate to the driver folder (for example c:\driver\64-bit\)** and select **“OEMSETUP”**.



**Choose Kyocera TASKalfa 8052ci KX**



**Rename Printer and finish installation.**





After installing the printer, send your username to

**helpdesk@cerge-ei.cz** and we will enable your account for printing.

**For Advanced settings go to:**

[https://itinfo.cerge-ei.cz/doku.php?id=public:print:kyocera\\_profile](https://itinfo.cerge-ei.cz/doku.php?id=public:print:kyocera_profile)

From:

<https://itinfo.cerge-ei.cz/> - **CERGE-EI Infrastructure Services**

Permanent link:

[https://itinfo.cerge-ei.cz/doku.php?id=public:print:cerge\\_desktops&rev=1515667697](https://itinfo.cerge-ei.cz/doku.php?id=public:print:cerge_desktops&rev=1515667697)

Last update: **2018-01-11 10:48**

