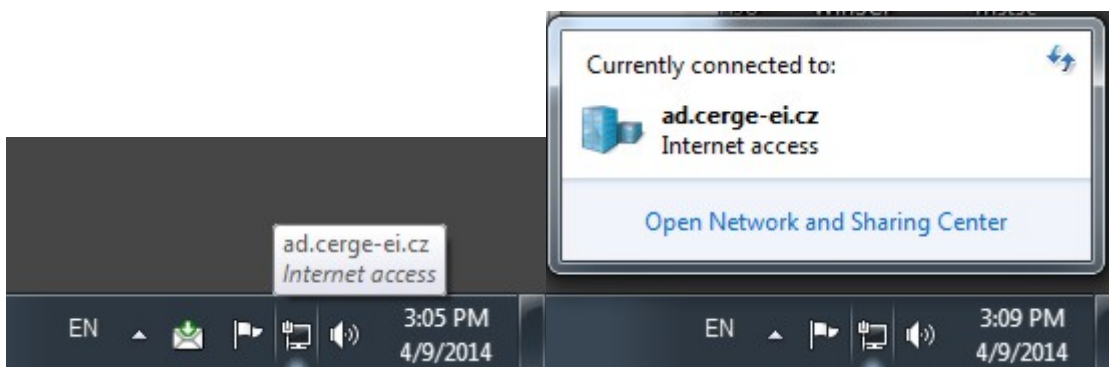


Network Connection

- [How to check connectivity](#)
- [How to check IP address](#)
- [How to differentiate malfunctions in network services](#)

How to check connectivity

There are different small icons on the taskbar in the lower right most corner of the Windows desktop. The following icon shows that you are connected to the local area network, authenticated on ad.cerge-ei.cz Active Directory and connected further to Internet.

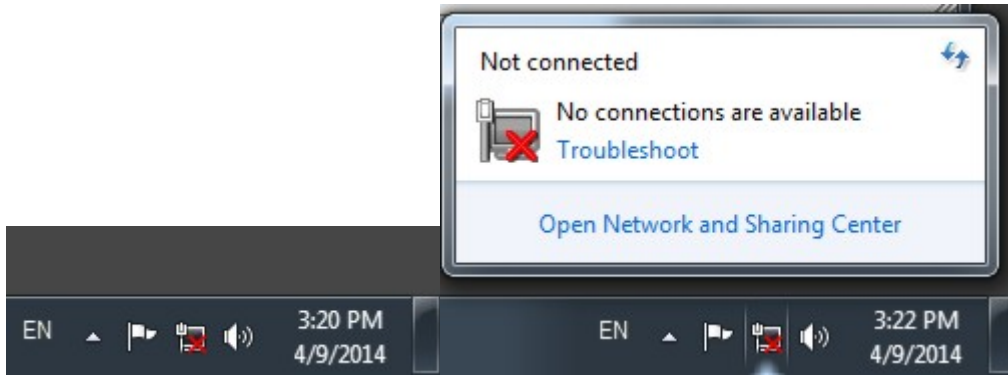


If you click on the icon and further on **Open Network and Sharing Center**, you'll get the following window:



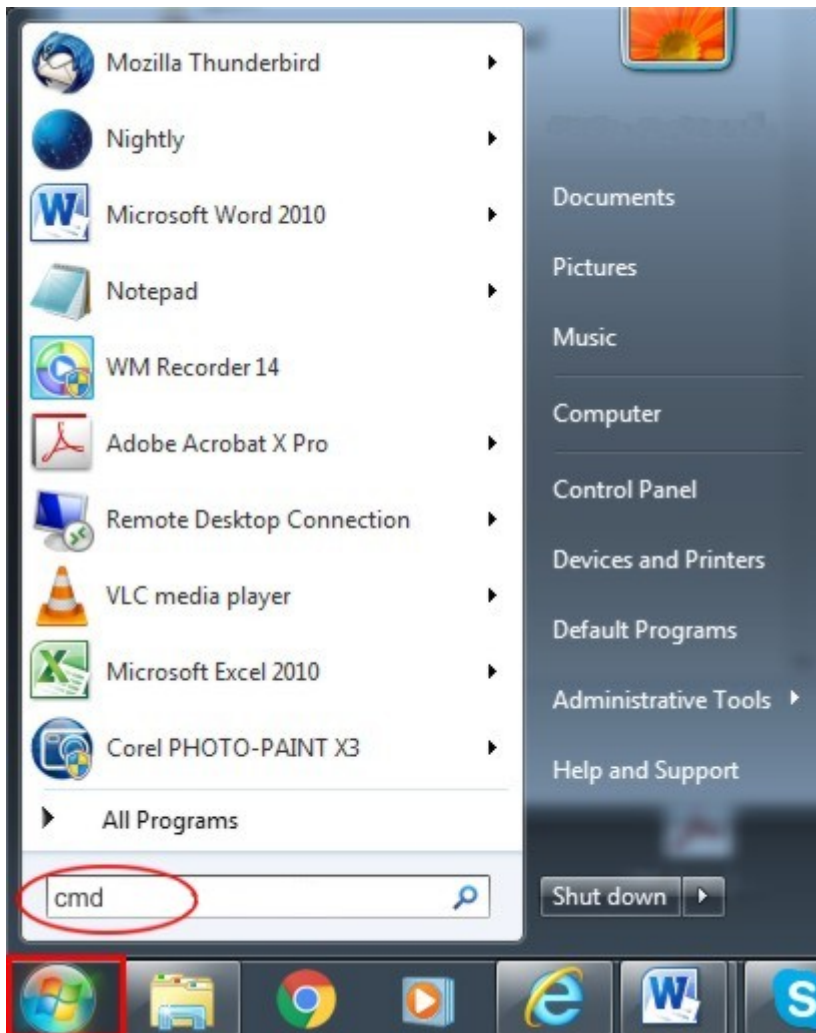
It provides basic network information and set up connections (your computer name, domain network name/Active Directory etc.)

If the icon is crossed out, as shown bellow, it means that your computer has no network connection



How to check IP address

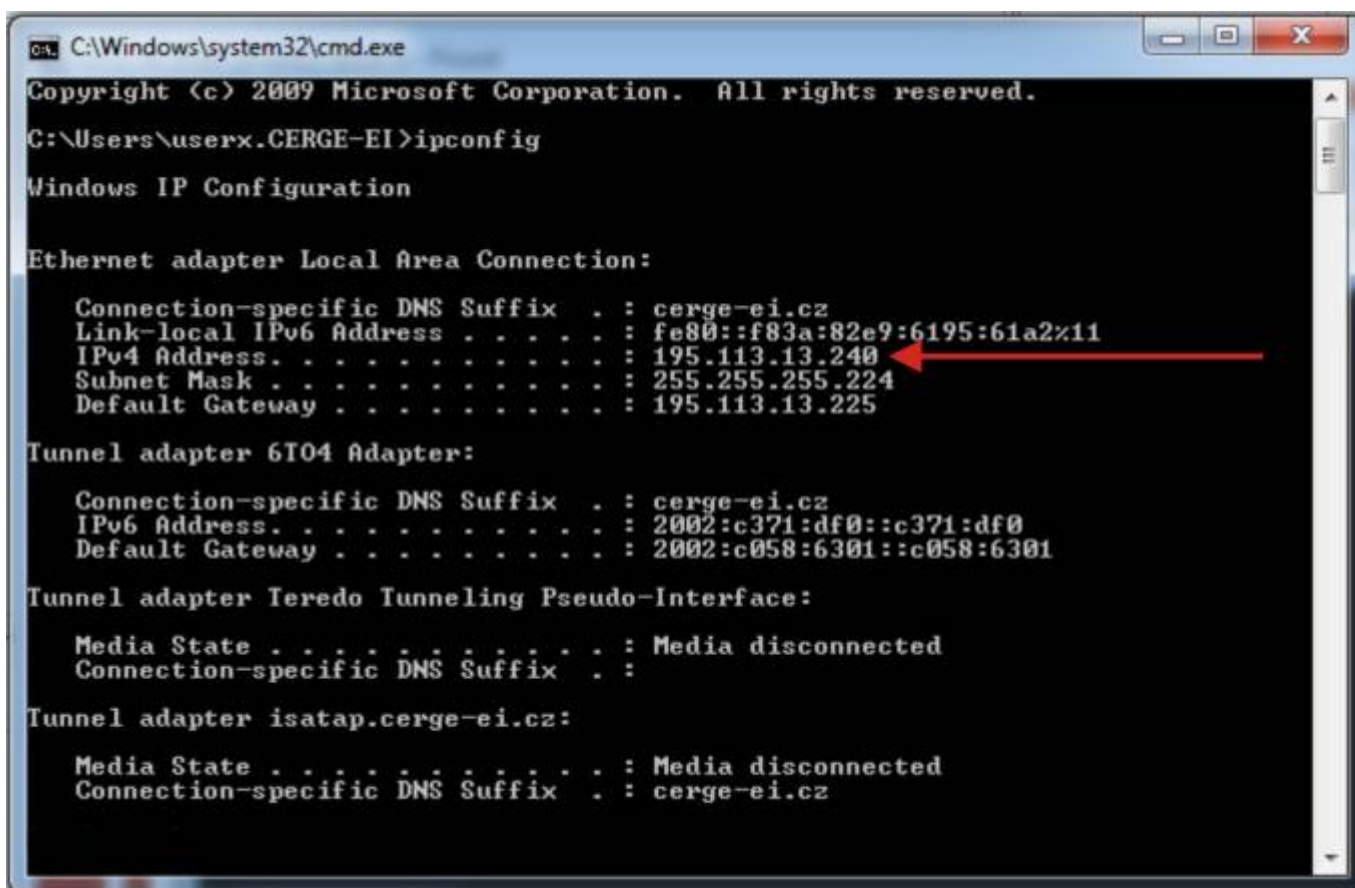
asfdafafas



asfasdfasdgasg



sagasgasgas



asgagsagas

asgasgasgas

sgdasddgadgas

How to differentiate malfunctions in network services

asdasadad

adadadadaad

From:
<https://itinfo.cerge-ei.cz/> - **CERGE-EI Infrastructure Services**

Permanent link:
https://itinfo.cerge-ei.cz/doku.php?id=public:network_connection&rev=1473677382

Last update: **2016-09-12 10:49**

